

USA-Clear Series

CLEAR INSULATED CONNECTORS

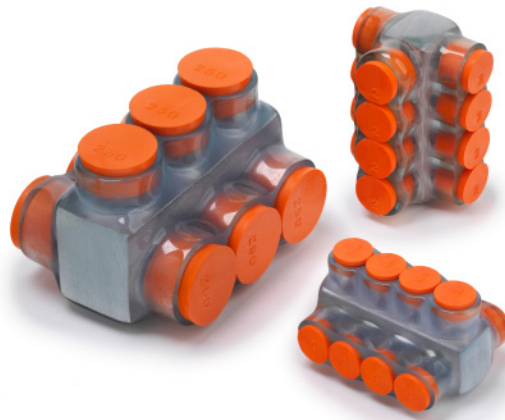
USA-C Series Power Distribution Connectors are dual-rated CU9AL, 600V, 90°C, high-strength 6061-T6 aluminum alloy, pre-filled with oxide-inhibitor.

Rugged, high-dielectric rubber/vinyl insulation is service rated to -20°C cold temperature. Sizes available for #14AWG to 600MCM.

- ▶ **Visual inspection is quick and easy with clear insulation**
- ▶ **Fast, simple installation with no taping**
- ▶ **Easy re-entry for inspection or changes**
- ▶ **PVC rubber/vinyl insulation provides high-dielectric strength**
- ▶ **Uniform insulation thickness assures integrity with a professional look**



WIRE CONNECTOR
11MB
AL9CU Rated 600 V, 90C



Two-Side Entry Multi-Cable USA-D-C Series

- Wire can enter a port from either side
- Available with 2, 3 or 4 wire-ports in most sizes



One-Side Entry Multi-Cable USA-C Series

- Wires can enter ports from one side only
- Available with 2, 3 or 4 wire-ports in some sizes



Splice/Reducer Two-Wire

- PBS-C Series In-Line Splice
- USA-D-2C Series allows Two-Side Entry
- USA-2C Series allows One-Side Entry

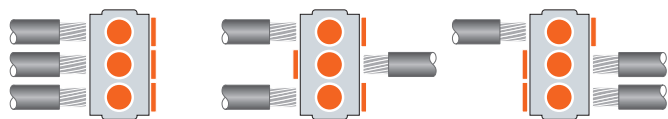


GREAVES

www.greaves-usa.com

MULTI-CABLE CONNECTORS

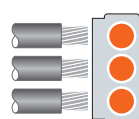
USAD-C SERIES, TWO-SIDE ENTRY



Entry optional from either side

CATALOG NUMBER	# OF PORTS	WIRE RANGE
USAD 4-3 C	3	
USAD 4-4 C	4	#4 - 14
USAD 2-3 C	3	
USAD 2-4 C	4	#2 - 14
USAD 2/0-3 C	3	#2/0 - 14
USAD 250-3 C	3	250 - #6

USA-C SERIES, ONE-SIDE ENTRY



CATALOG NUMBER	# OF PORTS	WIRE RANGE
USA 4-3 C	3	
USA 4-4 C	4	#4 - 14
USA 2-3 C	3	#2 - 14
USA 2/0-3 C	3	#2/0 - 14
USA 250-3 C	3	250 - #6

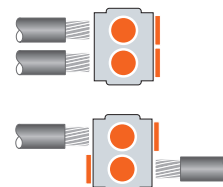
SPLICE/REDUCERS

PBS-C SERIES, IN-LINE



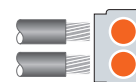
CATALOG NUMBER	WIRE RANGE
PBS 2 C	#2 - 14
PBS 2/0 C	#2/0 - 14
PBS 250 C	250 - #6
PBS 350 C	350 - #6
PBS 600 C	600 - #4

USAD-C SERIES TWO-SIDE ENTRY



CATALOG NUMBER	WIRE RANGE
USAD 4-2 C	#4 - 14
USAD 2-2 C	#2 - 14
USAD 2/0-2 C	#2/0 - 14
USAD 250-2 C	250 - 6
USAD 600-2 C	600 - 4

USA-C SERIES ONE-SIDE ENTRY



CATALOG NUMBER	WIRE RANGE
USA 4-2 C	#4 - 14
USA 2-2 C	#2 - 14
USA 2/0-2 C	#2/0 - 14
USA 3/0-2 C	#3/0 - 6

INSTALLATION INSTRUCTIONS - USA-C, USAD-C, AND PBS-C SERIES CLEAR INSULATED CONNECTORS

Not recommended for aluminum wire smaller than #4.

- Strip Wire** - Strip wire insulation for CONNECTOR SIZE per STRIP LENGTH chart at right, so insulation will stop at aluminum connector body when wire is inserted.
- Insert Wire** - Assure that bare conductor has full contact with both screw and connector body. Wire insulation should be covered by connector insulation by a minimum of 3/8 inch.
- Tighten Screw** - Tighten screw to attain firm connection for wire size using TORQUE GUIDE chart below.
- Replace Plugs** - Replace plugs over screws and spare wire-ports.

WIRE STRIP LENGTH (INCHES)		
CONNECTOR SIZE	STRIP LENGTH	HEX SIZE
4	1	SLOTTED
2	1	SLOTTED
2/0	1	SLOTTED
3/0	1	SLOTTED
250	1	5/16
350	1 1/2	5/16
600	2	5/16

TORQUE GUIDE (INCH-POUNDS)

WIRE SIZE	CONNECTOR SIZE						
	4	2	2/0	3/0	250	350	600
#10 - 14 AWG	35	100	100				
#8 AWG	35	100	100				
#4 - 6 AWG	35	100	100	100	150	220	
#3 - 1 AWG		100	100	100	150	220	
1/0 AWG			100	100	150	220	
2/0 AWG			100	100	150	220	
3/0 AWG				100	150	220	
4/0 AWG					150	220	
250 MCM					150	220	310
350 MCM						220	310
400 MCM							310
500 MCM							440
600 MCM							440



C US
LISTED
WIRE CONNECTOR
11MB
AL9CU Rated 600 V, 90C

For fine-strand flex or extra-flex cables, use Greaves PT-FX Shoo-Pin™ Adapters with USAC, USADC, or PBSC Series



GREAVES CORPORATION

P.O. Box 307, Centerbrook, CT 06409

Phone 860-664-4505 | 800-243-1130

www.greaves-usa.com | info@greaves-usa.com