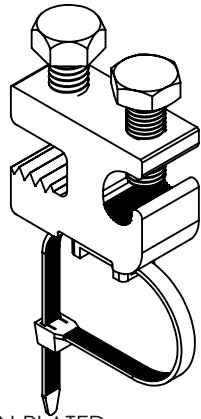


TORQUE GUIDE (INCH-POUNDS)		
WIRE SIZE	WIRE CLAMP TORQUE	FLANGE CLAMP TORQUE
14	20	120
12	25	120
10	50	120
8	60	120
6	80	120
4	100	120
2	100	120

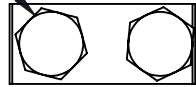
REVISIONS			
REV.	DESCRIPTION	BY	DATE
A	ADDED UL CERTIFICATIONS	MBS	9/20/2017
B	ELIMINATED PLATED STEEL SCREWS	MBS	5/10/2019

FEATURES

- FLANGE THICKNESS:
 - .060" TO 0.375"
- WIRE RANGE
 - #14 TO #2 SOL
 - #14 TO #2 STRANDED
 - LAY-IN CAPABILITY
- BODY MATERIAL 6061-T6 ALUMINUM, TIN PLATED
- UL RATED, CU
 - UL 467: GROUNDING & BONDING
 - UL 2703: PHOTOVOLTAIC SYSTEMS
- SCREW PENETRATES BEAM SURFACE PAINT/OXIDE FOR ELECTRICAL CONTACT
-
- CABLE TIE HOLDER (GBC2A-SST ONLY):
 - FOR POSITIONING USE ONLY
 - MATERIAL: NYLON 6/6, BLACK. UV RESISTANT
 - UL RATED: INDOOR & OUTDOOR USE
 - OPENING (.06 x .19) ACCEPTS STANDARD-DUTY CABLE TIES
 - SECURED WITH 18-8 STAINLESS STEEL SCREW

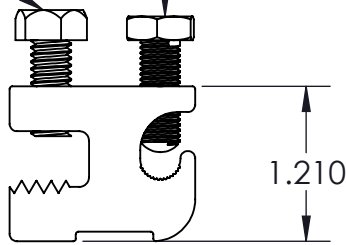


USE 1/2" SOCKET BOTH BOLTS

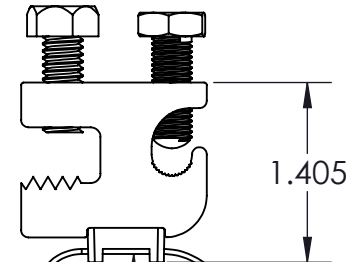
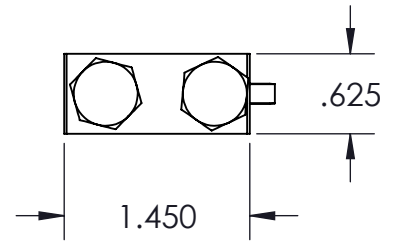


BEAM FLANGE SCREW


WIRE SCREW



- GBC2A-SST INCLUDES;
- CABLE TIE HOLDER
 - STAINLESS STEEL SCREWS



CABLE TIE HOLDER
GBC2A-SST ONLY

			MATERIAL SEE NOTES	DO NOT SCALE DRAWING		 GREAVES CORPORATION 30 INDUSTRIAL PARK ROAD CENTERBROOK, CT 06409
			FINISH SEE NOTES	SCALE 2:3		
			TOLERANCE UNLESS OTHERWISE SPECIFIED	DRAWN MBS	DATE 8/14/2017	
			DECIMAL .XX±.02	CHECKED		
			DECIMAL .XXX±.005	SIZE A		CODE IDENT
USED ON	NEXT ASSY	QTY	ANGLE±0°30'	SHEET 1 OF 1		DRAWING NUMBER GBC2A
						REV B