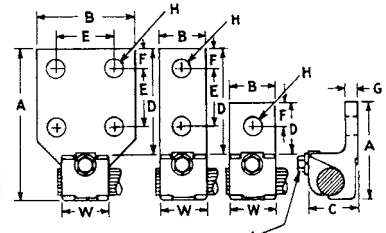




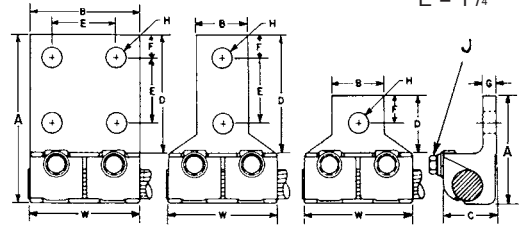
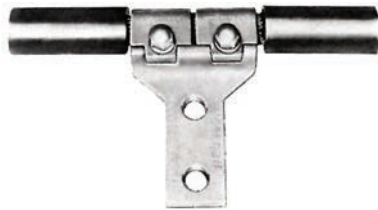
JAR SERIES

Terminal lugs, one cable 90°



Cable Range		H.T.	BRONZE CONNECTORS								DUAL-RATED ALUMINUM CONNECTORS													
Max.	Min.		Catalog Number	Dimension in Inches (Approximate)								Catalog Number	Dimension in Inches (Approximate)											
				A	B	C	D	F	G	H	J		W	A	B	C	D	F	G	H	J	W		
#1	#4	1	J2AR	1 ⁵ / ₈	2 ⁵ / ₃₂	1 ¹ / ₁₆	2 ⁷ / ₃₂	3 ³ / ₈	3 ¹ / ₁₆	9 ³ / ₃₂	5 ¹ / ₁₆	2 ⁹ / ₃₂	ALJ2AR ALJ2AR2N	1 ¹⁵ / ₁₆	1 ⁵ / ₁₆	1 ⁵ / ₁₆	1	7 ¹ / ₁₆	1 ¹ / ₄	9 ³ / ₃₂	5 ¹ / ₁₆	1 ³ / ₈		
1/0	#4	1													4 ³ / ₁₆	1 ¹ / ₁₆	1 ⁵ / ₁₆	3 ¹ / ₄	5 ⁵ / ₈	1 ¹ / ₄	9 ¹ / ₁₆	5 ¹ / ₁₆	1 ⁵ / ₁₆	
1/0	#4	2																						
2/0	1/0	1		J3AR	1 ¹⁵ / ₁₆	2 ⁹ / ₃₂	7 ¹ / ₈	1	1 ⁵ / ₃₂	7 ¹ / ₃₂	1 ³ / ₃₂	5 ¹ / ₁₆		3 ¹ / ₃₂	ALJ4AR ALJ4AR2N	2 ⁷ / ₁₆	1 ³ / ₁₆	1 ³ / ₁₆	1 ¹ / ₄	9 ¹ / ₁₆	5 ¹ / ₁₆	7 ¹ / ₁₆	5 ¹ / ₁₆	3 ¹ / ₁₆
4/0	1/0	1	J4AR J4AR2N	2 ¹ / ₄	1 ¹ / ₁₆	1	1 ³ / ₁₆	9 ¹ / ₁₆	1 ¹ / ₄	7 ¹ / ₁₆	5 ¹ / ₁₆	1 ³ / ₁₆	ALJ5AR ALJ5AR2N ALJ5AR4N	2 ⁷ / ₈	1 ³ / ₈	1 ³ / ₈	1 ¹ / ₂	2 ¹ / ₃	1 ³ / ₃₂	1 ⁷ / ₃₂	3 ¹ / ₈	1 ³ / ₈		
4/0	1/0	2			4 ⁵ / ₁₆	1 ¹ / ₁₆	1	3 ¹ / ₄	5 ⁵ / ₈	1 ¹ / ₄	9 ¹ / ₁₆	5 ¹ / ₁₆			4 ⁷ / ₈	1 ³ / ₈	1 ³ / ₈	3 ¹ / ₄	2	1 ³ / ₃₂	9 ¹ / ₁₆	3 ¹ / ₈	1 ³ / ₁₆	
4/0	2/0	1													4 ⁷ / ₈	3	1 ³ / ₈	3 ¹ / ₄	5 ⁵ / ₈	1 ³ / ₃₂	9 ¹ / ₁₆	3 ¹ / ₈	1 ³ / ₈	
4/0	2/0	2																						
350	4/0	1	J5AR	2 ⁷ / ₈	1 ⁷ / ₃₂	1 ¹ / ₄	1 ³ / ₈	2 ¹ / ₃₂	9 ³ / ₃₂	1 ⁷ / ₃₂	3 ¹ / ₈	1 ¹¹ / ₃₂	ALJ6AR	3 ¹ / ₁₆	1 ⁹ / ₁₆	1 ⁵ / ₈	1 ⁵ / ₈	3 ¹ / ₄	3 ¹ / ₄	1 ⁵ / ₃₂	9 ¹ / ₁₆	3 ¹ / ₈	1 ⁹ / ₁₆	
350	4/0	2	J5AR2N	4 ¹⁷ / ₃₂	1 ⁷ / ₃₂	1 ¹ / ₄	3 ³ / ₃₂	5 ⁵ / ₈	9 ³ / ₃₂	9 ¹ / ₁₆	3 ¹ / ₈	1 ¹¹ / ₃₂	ALJ6AR2N	4 ¹⁵ / ₁₆	1 ⁵ / ₈	1 ⁵ / ₈	3 ³ / ₈	3 ¹ / ₄	1 ⁵ / ₃₂	9 ¹ / ₁₆	3 ¹ / ₈	1 ⁹ / ₁₆		
350	4/0	4	J5AR4N	4 ¹⁷ / ₃₂	3	1 ¹ / ₄	3 ³ / ₃₂	5 ⁵ / ₈	9 ³ / ₃₂	9 ¹ / ₁₆	3 ¹ / ₈	1 ¹¹ / ₃₂	ALJ6AR4N	4 ¹⁵ / ₁₆	3	1 ⁵ / ₈	3 ³ / ₈	5 ⁵ / ₈	1 ⁵ / ₃₂	9 ¹ / ₁₆	3 ¹ / ₈	1 ⁹ / ₁₆		
500	350	1	J6AR	3 ¹ / ₁₆	1 ⁷ / ₁₆	1 ¹³ / ₃₂	1 ⁵ / ₈	3 ¹ / ₄	5 ¹ / ₁₆	9 ¹ / ₁₆	3 ¹ / ₈	1 ⁹ / ₁₆	ALJ7AR	3 ¹ / ₁₆	1 ¹³ / ₁₆	1 ¹⁵ / ₁₆	1 ⁷ / ₈	5 ⁵ / ₈	5 ⁵ / ₈	2 ¹ / ₃₂	7 ¹ / ₁₆	1 ¹³ / ₁₆		
500	350	2	J6AR2N	4 ³ / ₄	1 ⁷ / ₁₆	1 ¹³ / ₃₂	3 ⁵ / ₁₆	5 ⁵ / ₈	5 ¹ / ₁₆	9 ¹ / ₁₆	3 ¹ / ₈	1 ⁹ / ₁₆	ALJ7AR2N	4 ¹⁵ / ₁₆	1 ⁵ / ₈	1 ⁵ / ₈	3 ³ / ₈	3 ¹ / ₄	1 ⁵ / ₃₂	9 ¹ / ₁₆	3 ¹ / ₈	1 ⁹ / ₁₆		
500	350	4	J6AR4N	4 ³ / ₄	3	1 ¹³ / ₃₂	3 ⁵ / ₁₆	5 ⁵ / ₈	5 ¹ / ₁₆	9 ¹ / ₁₆	3 ¹ / ₈	1 ⁹ / ₁₆	ALJ7AR4N	4 ¹⁵ / ₁₆	3	1 ⁵ / ₈	3 ³ / ₈	5 ⁵ / ₈	1 ⁵ / ₃₂	9 ¹ / ₁₆	3 ¹ / ₈	1 ⁹ / ₁₆		
750	500	1	J7AR	3 ¹⁷ / ₃₂	1 ¹¹ / ₁₆	1 ¹¹ / ₁₆	1 ²⁷ / ₃₂	7 ⁷ / ₈	3 ³ / ₈	2 ¹ / ₃₂	7 ¹ / ₁₆	1 ²⁹ / ₃₂	ALJ8AR	4 ³ / ₁₆	2 ¹ / ₁₆	2 ³ / ₁₆	2 ¹ / ₈	5 ⁵ / ₈	2 ¹ / ₃₂	1 ¹ / ₁₆	1 ¹ / ₂	2 ¹ / ₁₆		
750	500	2	J7AR2N	5 ¹ / ₃₂	1 ¹¹ / ₁₆	3 ¹ / ₃₂	5 ⁵ / ₈	3 ¹ / ₄	9 ¹ / ₁₆	7 ¹ / ₁₆	1 ²⁹ / ₃₂	5 ⁵ / ₁₆	ALJ8AR2N	5 ⁵ / ₁₆	3	2 ² / ₁₆	3 ¹ / ₂	1	2 ¹ / ₃₂	9 ¹ / ₁₆	1 ¹ / ₂	2 ¹ / ₁₆		
750	500	4	J7AR4N	5 ¹ / ₃₂	3	1 ¹¹ / ₁₆	3 ¹ / ₃₂	5 ⁵ / ₈	3 ³ / ₈	9 ¹ / ₁₆	7 ¹ / ₁₆	1 ²⁹ / ₃₂	ALJ8AR4N	5 ⁵ / ₁₆	3 ³ / ₄	2 ² / ₁₆	3 ¹ / ₂	5 ⁵ / ₈	2 ¹ / ₃₂	9 ¹ / ₁₆	1 ¹ / ₂	2 ¹ / ₁₆		
1000	750	1	J8AR	4 ¹ / ₈	1 ¹⁵ / ₁₆	1 ¹⁵ / ₁₆	2 ¹ / ₈	1	7 ¹ / ₁₆	1 ¹¹ / ₁₆	1 ¹ / ₂	2 ⁵ / ₃₂	ALJ8AR	4 ³ / ₁₆	2 ¹ / ₁₆	2 ³ / ₁₆	2 ¹ / ₈	5 ⁵ / ₈	2 ¹ / ₃₂	1 ¹ / ₁₆	1 ¹ / ₂	2 ¹ / ₁₆		
1000	750	2	J8AR2N	5 ³ / ₈	1 ¹⁵ / ₁₆	1 ¹⁵ / ₁₆	3 ³ / ₈	5 ⁵ / ₈	7 ¹ / ₁₆	9 ¹ / ₁₆	1 ¹ / ₂	2 ⁵ / ₃₂	ALJ8AR2N	5 ⁵ / ₁₆	3	2 ² / ₁₆	3 ¹ / ₂	1	2 ¹ / ₃₂	9 ¹ / ₁₆	1 ¹ / ₂	2 ¹ / ₁₆		
1000	750	4	J8AR4N	5 ³ / ₈	3	1 ¹⁵ / ₁₆	3 ³ / ₈	5 ⁵ / ₈	7 ¹ / ₁₆	9 ¹ / ₁₆	1 ¹ / ₂	2 ⁵ / ₃₂	ALJ8AR4N	5 ⁵ / ₁₆	3 ³ / ₄	2 ² / ₁₆	3 ¹ / ₂	5 ⁵ / ₈	2 ¹ / ₃₂	9 ¹ / ₁₆	1 ¹ / ₂	2 ¹ / ₁₆		

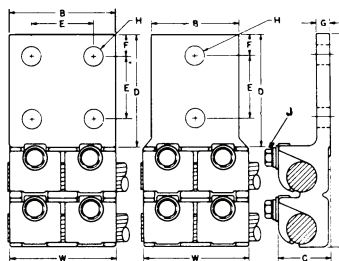
** Holes in Tang



JJAR SERIES

Terminal lugs, one cable 90°

Cable Range		H.T.	BRONZE CONNECTORS								DUAL-RATED ALUMINUM CONNECTORS													
Max.	Min.		Catalog Number	Dimension in Inches (Approximate)								Catalog Number	Dimension in Inches (Approximate)											
				A	B	C	D	F	G	H	J		W	A	B	C	D	F	G	H	J	W		
#1	#4	1	JJ2AR	1 ³ / ₄	3 ¹ / ₄	1 ¹³ / ₁₆	3 ¹ / ₁₆	3 ³ / ₈	3 ¹ / ₁₆	1 ³ / ₃₂	5 ¹ / ₁₆	1 ³ / ₄	ALJJ2AR ALJJ2AR2N	1 ¹⁵ / ₁₆	1 ⁵ / ₁₆	1 ⁵ / ₁₆	1	7 ¹ / ₁₆	1 ¹ / ₄	9 ³ / ₃₂	5 ¹ / ₁₆	3 ⁵ / ₈		
1/0	#4	1													4 ³ / ₁₆	1 ¹ / ₁₆	1 ⁵ / ₁₆	3 ¹ / ₄	5 ⁵ / ₈	1 ¹ / ₄	9 ¹ / ₁₆	5 ¹ / ₁₆	3 ⁵ / ₈	
1/0	#4	2																						
2/0	1/0	1		JJ3AR	2 ¹ / ₁₆	1 ⁵ / ₁₆	1 ¹³ / ₁₆	1	7 ¹ / ₁₆	7 ¹ / ₃₂	1 ³ / ₃₂	5 ¹ / ₁₆		2 ¹ / ₁₆	ALJJ4AR ALJJ4AR2N	2 ⁷ / ₁₆	1 ³ / ₁₆	1 ³ / ₁₆	1 ¹ / ₄	9 ¹ / ₁₆	5 ¹ / ₁₆	7 ¹ / ₁₆	5 ¹ / ₁₆	3 ³ / ₄
4/0	1/0	1	JJ4AR	4 ³ / ₁₆	1 ¹ / ₁₆	1 ¹³ / ₁₆	3 ¹ / ₈	5 ⁵ / ₈	7 ¹ / ₃₂	9 ¹ / ₁₆	5 ¹ / ₁₆	2 ¹ / ₈	ALJJ5AR ALJJ5AR2N	2 ⁷ / ₈	1 ³ / ₈	1 ³ / ₈	1 ¹ / ₂	1 ¹¹ / ₁₆	1 ³ / ₃₂	1 ⁷ / ₃₂	3 ¹ / ₈	4		
4/0	1/0	2													4 ⁷ / ₈	1 ³ / ₈	1 ³ / ₈	3 ¹ / ₄	5 ⁵ / ₈	1 ³ / ₃₂	9 ¹ / ₁₆	3 ¹ / ₈	4	
4/0	2/0	1																						
4/0	2/0	2																						
350	4/0	1	JJ5AR	2 ¹¹ / ₁₆	1 ¹ / ₄	1 ¹ / ₄	1 ³ / ₈	9 ¹ / ₁₆	9 ³ / ₃₂	9 ¹ / ₁₆	3 ¹ / ₈	2 ² / ₄	ALJJ6AR	3 ¹ / ₁₆	1 ⁹ / ₁₆	1 ⁵ / ₈	1 ⁵ / ₈	3 ¹ / ₄	1 ⁵ / ₃₂	9 ¹ / ₁₆	3 ¹ / ₈	4 ¹ / ₈		
350	4/0	2	JJ5AR2N	4 ⁵ / ₈	1 ¹ / ₄	1 ¹ / ₄	3 ³ / ₁₆	5 ⁵ / ₈	9 ³ / ₃₂	9 ¹ / ₁₆	3 ¹ / ₈	2 ² / ₄	ALJJ6AR2N	4 ¹⁵ / ₁₆	1 ⁵ / ₈	1 ⁵ / ₈	3 ³ / ₈	5 ⁵ / ₈	1 ⁵ / ₃₂	9 ¹ / ₁₆	3 ¹ / ₈	4 ¹ / ₈		
350	4/0	4	JJ5AR4N	4 ⁵ / ₈	3	1 ¹ / ₄	3 ⁵ / ₁₆	5 ⁵ / ₈	9 ³ / ₃₂	9 ¹ / ₁₆	3 ¹ / ₈	2 ² / ₄	ALJJ6AR4N	4 ¹⁵ / ₁₆	3	1 ⁵ / ₈	3 ³ / ₈	5 ⁵ / ₈	1 ⁵ / ₃₂	9 ¹ / ₁₆	3 ¹ / ₈	4 ¹ / ₈		
500	350	1	JJ6AR	3 ¹ / ₈	1 ⁷ / ₁₆	1 ⁷ / ₁₆	1 ⁵ / ₈	3 ¹ / ₄	5 ¹ / ₁₆	9 ¹ / ₁₆	3 ¹ / ₈	3 ¹ / ₄	ALJJ7AR	3 ¹¹ / ₁₆	1 ¹³ / ₁₆	1 ¹⁵ / ₁₆	1 ⁷ / ₈	7 ¹ / ₈	5 ⁵ / ₈	2 ¹ / ₃₂	7 ¹ / ₁₆	4 ³ / ₄		
500	350	2	JJ6AR2N	4 ⁷ / ₈	1 ⁷ / ₁₆	1 ⁷ / ₁₆	3 ³ / ₈	5 ⁵ / ₈	5 ¹ / ₁₆	9 ¹ / ₁₆														

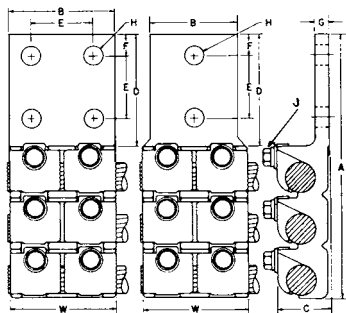


2JJAR SERIES

Terminal lugs, two cables

Cable Range			BRONZE CONNECTORS								DUAL-RATED ALUMINUM CONNECTORS							
Max.	Min.	H.T.	Catalog Number	Dimension in Inches (Approximate)							Catalog Number	Dimension in Inches (Approximate)						
				A	B	C	D	G	J	W		A	B	C	D	G	J	W
#1	#4	2	2JJ2AR2N	4 ³ / ₄	1 ⁵ / ₁₆	3 ³ / ₄	3	7 ⁷ / ₃₂	5 ⁵ / ₁₆	1 ¹¹ / ₁₆	AL2JJ2AR2N	5 ¹ / ₄	1 ¹ / ₈	1 ⁵ / ₁₆	3 ¹ / ₄	9 ⁹ / ₃₂	5 ⁵ / ₁₆	3 ⁵ / ₈
1/0	#4	2																
2/0	1/0	2	2JJ3AR2N	5 ¹ / ₈	1 ¹¹ / ₁₆	1 ³ / ₁₆	3 ¹ / ₈	1 ¹ / ₄	5 ⁵ / ₁₆	2 ¹ / ₈	AL2JJ4AR2N	5 ¹¹ / ₁₆	1 ¹ / ₈	1 ³ / ₁₆	3 ¹ / ₄	5 ⁵ / ₁₆	5 ⁵ / ₁₆	3 ³ / ₄
4/0	1/0	2									AL2JJ4AR4N	5 ¹¹ / ₁₆	3	1 ³ / ₁₆	3 ¹ / ₄	5 ⁵ / ₁₆	5 ⁵ / ₁₆	3 ³ / ₄
4/0	1/0	4	2JJ4AR2N	5 ⁷ / ₁₆	1 ¹ / ₈	1	3 ¹ / ₄	1 ¹ / ₄	5 ⁵ / ₁₆	2 ¹ / ₁₆								
4/0	2/0	2	2JJ4AR4N	5 ⁷ / ₁₆	3	1	3 ¹ / ₄	1 ¹ / ₄	5 ⁵ / ₁₆	2 ¹ / ₁₆								
4/0	2/0	4																
350	4/0	2	2JJ5AR2N	5 ¹⁵ / ₁₆	2 ²⁹ / ₃₂	1 ¹ / ₄	3 ⁵ / ₁₆	5 ⁵ / ₁₆	3 ³ / ₈	2 ³ / ₄	AL2JJ5AR2N	6 ¹ / ₄	2 ¹ / ₄	1 ³ / ₈	3 ³ / ₈	1 ¹³ / ₃₂	3 ³ / ₈	4
350	4/0	4	2JJ5AR4N	5 ¹⁵ / ₁₆	3	1 ¹ / ₄	3 ⁵ / ₁₆	5 ⁵ / ₁₆	3 ³ / ₈	2 ³ / ₄	AL2JJ5AR4N	6 ¹ / ₄	3	1 ³ / ₈	3 ³ / ₈	1 ¹³ / ₃₂	3 ³ / ₈	4
500	350	2	2JJ6AR2N	6 ³ / ₈	2 ¹ / ₂	1 ⁷ / ₁₆	3 ³ / ₈	3 ³ / ₈	3 ³ / ₈	3 ¹ / ₄	AL2JJ6AR2N	6 ³ / ₄	2 ¹ / ₂	1 ⁵ / ₈	3 ¹ / ₂	1 ¹⁵ / ₃₂	3 ³ / ₈	4 ¹ / ₈
500	350	4	2JJ6AR4N	6 ³ / ₈	3	1 ⁷ / ₁₆	3 ³ / ₈	3 ³ / ₈	3 ³ / ₈	3 ¹ / ₄	AL2JJ6AR4N	6 ³ / ₄	3	1 ⁵ / ₈	3 ¹ / ₂	1 ¹⁵ / ₃₂	3 ³ / ₈	4 ¹ / ₈
750	500	2	2JJ7AR2N	6 ¹³ / ₁₆	3	1 ³ / ₄	3 ³ / ₈	7 ¹ / ₁₆	7 ¹ / ₁₆	3 ³ / ₄	AL2JJ7AR2N	7 ¹ / ₈	3	1 ¹⁵ / ₁₆	3 ¹ / ₂	5 ⁵ / ₈	7 ¹ / ₁₆	4 ³ / ₄
750	500	4	2JJ7AR4N	6 ¹³ / ₁₆	3	1 ³ / ₄	3 ³ / ₈	7 ¹ / ₁₆	7 ¹ / ₁₆	3 ³ / ₄	AL2JJ7AR4N	7 ¹ / ₈	3	1 ¹⁵ / ₁₆	3 ¹ / ₂	5 ⁵ / ₈	7 ¹ / ₁₆	4 ³ / ₄
1000	750	2	2JJ8AR2N	7 ³ / ₈	3 ⁷ / ₃₂	1 ¹⁵ / ₁₆	3 ³ / ₈	1 ¹ / ₂	1 ¹ / ₂	4 ⁷ / ₁₆	AL2JJ8AR2N	7 ³ / ₄	3 ¹ / ₄	2 ³ / ₁₆	3 ¹ / ₂	2 ¹ / ₃₂	1 ¹ / ₂	5 ¹ / ₄
1000	750	4	2JJ8AR4N	7 ³ / ₈	3 ⁷ / ₃₂	1 ¹⁵ / ₁₆	3 ³ / ₈	1 ¹ / ₂	1 ¹ / ₂	4 ⁷ / ₁₆	AL2JJ8AR4N	7 ³ / ₄	3 ¹ / ₄	2 ³ / ₁₆	3 ¹ / ₂	2 ¹ / ₃₂	1 ¹ / ₂	5 ¹ / ₄

** Holes in Tang



3JJAR SERIES

Terminal lugs, three cables, 90°

#1	#4	2	3JJ2AR2N	5 ¹¹ / ₁₆	1 ⁵ / ₁₆	1 ³ / ₁₆	3	7 ⁷ / ₃₂	5 ⁵ / ₁₆	1 ³ / ₄	AL3JJ2AR2N	6 ⁵ / ₁₆	1 ¹ / ₈	1 ⁵ / ₁₆	3 ¹ / ₄	9 ⁹ / ₃₂	5 ⁵ / ₁₆	3 ⁵ / ₈
1/0	#4	2																
2/0	1/0	2	3JJ3AR2N	6 ³ / ₁₆	1 ¹¹ / ₁₆	1 ³ / ₁₆	3 ¹ / ₈	1 ¹ / ₄	5 ⁵ / ₁₆	2 ¹ / ₈	AL3JJ4AR2N	7 ¹ / ₁₆	1 ¹ / ₈	1 ³ / ₁₆	3 ¹ / ₄	5 ⁵ / ₁₆	5 ⁵ / ₁₆	3 ³ / ₄
4/0	1/0	2									AL3JJ4AR4N	7 ¹ / ₁₆	3	1 ³ / ₁₆	3 ¹ / ₄	5 ⁵ / ₁₆	5 ⁵ / ₁₆	3 ³ / ₄
4/0	1/0	4	3JJ4AR2N	6 ⁵ / ₈	1 ⁷ / ₈	1	3 ¹ / ₄	1 ¹ / ₄	5 ⁵ / ₁₆	2 ¹ / ₁₆								
4/0	2/0	2	3JJ4AR4N	6 ⁵ / ₈	3	1	3 ¹ / ₄	1 ¹ / ₄	5 ⁵ / ₁₆	2 ¹ / ₁₆								
4/0	2/0	4																
350	4/0	2	3JJ5AR2N	7 ¹ / ₄	2 ²⁹ / ₃₂	1 ¹ / ₄	3 ⁵ / ₁₆	5 ⁵ / ₁₆	3 ³ / ₈	2 ³ / ₄	AL3JJ5AR2N	7 ³ / ₄	2 ¹ / ₄	1 ³ / ₈	3 ³ / ₈	1 ¹³ / ₃₂	3 ³ / ₈	4
350	4/0	4	3JJ5AR4N	7 ¹ / ₄	3	1 ¹ / ₄	3 ⁵ / ₁₆	5 ⁵ / ₁₆	3 ³ / ₈	2 ³ / ₄	AL3JJ5AR4N	7 ³ / ₄	3	1 ³ / ₈	3 ³ / ₈	1 ¹³ / ₃₂	3 ³ / ₈	4
500	350	2	3JJ6AR2N	7 ⁷ / ₈	2 ¹ / ₂	1 ⁷ / ₁₆	3 ³ / ₈	3 ³ / ₈	3 ³ / ₈	3 ¹ / ₄	AL3JJ6AR2N	8 ¹ / ₁₆	2 ¹ / ₂	1 ⁵ / ₈	3 ¹ / ₂	1 ¹⁵ / ₃₂	3 ³ / ₈	4 ¹ / ₈
500	350	4	3JJ6AR4N	7 ⁷ / ₈	3	1 ⁷ / ₁₆	3 ³ / ₈	3 ³ / ₈	3 ³ / ₈	3 ¹ / ₄	AL3JJ6AR4N	8 ⁵ / ₁₆	3	1 ⁵ / ₈	3 ¹ / ₂	1 ¹⁵ / ₃₂	3 ³ / ₈	4 ¹ / ₈
750	500	2	3JJ7AR2N	8 ¹ / ₂	3	1 ³ / ₄	3 ³ / ₈	7 ¹ / ₁₆	7 ¹ / ₁₆	3 ³ / ₄	AL3JJ7AR2N	9 ³ / ₁₆	3	1 ¹⁵ / ₁₆	3 ¹ / ₂	5 ⁵ / ₈	7 ¹ / ₁₆	4 ³ / ₄
750	500	4	3JJ7AR4N	8 ¹ / ₂	3	1 ³ / ₄	3 ³ / ₈	7 ¹ / ₁₆	7 ¹ / ₁₆	3 ³ / ₄	AL3JJ7AR4N	9 ³ / ₁₆	3	1 ¹⁵ / ₁₆	3 ¹ / ₂	5 ⁵ / ₈	7 ¹ / ₁₆	4 ³ / ₄
1000	750	2	3JJ8AR2N	9 ³ / ₈	3 ⁷ / ₃₂	1 ¹⁵ / ₁₆	3 ³ / ₈	1 ¹ / ₂	1 ¹ / ₂	4 ⁷ / ₁₆	AL3JJ8AR2N	9 ³ / ₁₆	3 ¹ / ₄	2 ³ / ₁₆	3 ¹ / ₂	2 ¹ / ₃₂	1 ¹ / ₂	5 ¹ / ₄
1000	750	4	3JJ8AR4N	9 ³ / ₈	3 ⁷ / ₃₂	1 ¹⁵ / ₁₆	3 ³ / ₈	1 ¹ / ₂	1 ¹ / ₂	4 ⁷ / ₁₆	AL3JJ8AR4N	9 ³ / ₁₆	3 ¹ / ₄	2 ³ / ₁₆	3 ¹ / ₂	2 ¹ / ₃₂	1 ¹ / ₂	5 ¹ / ₄

** Holes in Tang

E = 1³/₄"
 F = 5⁵/₈"
 H = 9⁹/₁₆"