

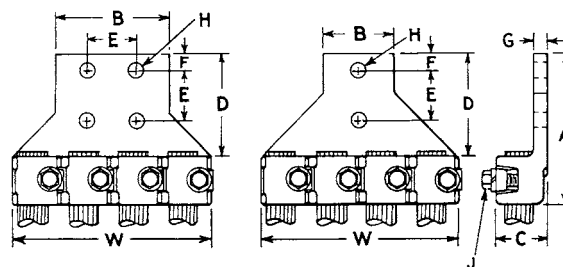
3JA SERIES

Terminal lugs, three cables, straight

E = 1 3/4"

Cable Range			H.T.	Catalog Number	BRONZE CONNECTORS										DUAL-RATED ALUMINUM CONNECTORS									
Max.	Min.				Dimension in Inches (Approximate)										Dimension in Inches (Approximate)									
				A	B	C	D	F	G	H	J	W	Catalog Number	A	B	C	D	F	G	H	J	W		
4/0	1/0	2											AL3J4A2N	5 1/16	1 7/8	1 3/16	3 1/4	5/8	5/16	9/16	5/16	3 1/2		
4/0	1/0	4											AL3J4A4N	5 1/16	3	1 3/16	3 1/4	5/8	5/16	9/16	5/16	3 1/2		
4/0	2/0	2	3J4A2N	4 13/32	1 7/8	1	3 1/4	5/8	1/4	9/16	5/16	3 1/2												
4/0	2/0	4	3J4A4N	4 13/32	3	1	3 1/4	5/8	1/4	9/16	5/16	3 1/2												
350	4/0	2	3J5A2N	4 5/8	2 5/16	1 13/32	3 9/32	5/8	5/16	9/16	3/8	4	AL3J5A2N	5 5/16	2 1/4	1 3/8	3 3/8	5/8	13/32	9/16	3/8	4 3/8		
350	4/0	4	3J5A4N	4 5/8	3	1 13/32	3 9/32	5/8	5/16	9/16	3/8	4	AL3J5A4N	5 5/16	3	1 3/8	3 3/8	5/8	13/32	9/16	3/8	4 3/8		
500	350	2	3J6A2N	4 3/4	2 1/2	1 15/32	3 5/16	5/8	3/8	9/16	3/8	4 9/16	AL3J6A2N	5 1/2	2 1/2	1 5/8	3 1/2	5/8	15/32	9/16	3/8	4 15/16		
500	350	4	3J6A4N	4 3/4	3	1 15/32	3 5/16	5/8	3/8	9/16	3/8	4 9/16	AL3J6A4N	5 1/2	3	1 5/8	3 1/2	5/8	15/32	9/16	3/8	4 15/16		
750	500	2	3J7A2N	5 1/4	3	1 3/4	3 11/32	5/8	7/16	9/16	7/16	5 1/4	AL3J7A2N	5 13/16	3	1 15/16	3 1/2	5/8	5/8	9/16	7/16	5 11/16		
750	500	4	3J7A4N	5 1/4	3	1 3/4	3 11/32	5/8	7/16	9/16	7/16	5 1/4	AL3J7A4N	5 13/16	3	1 15/16	3 1/2	5/8	5/8	9/16	7/16	5 11/16		
1000	750	2	3J8A2N	5 5/8	3 3/2	2	3 3/8	5/8	1/2	9/16	1/2	6 1/8	AL3J8A2N	6 1/16	3 1/4	2 5/16	3 1/2	5/8	2 1/32	9/16	1/2	6 7/16		
1000	750	4	3J8A4N	5 5/8	3 3/2	2	3 3/8	5/8	1/2	9/16	1/2	6 1/8	AL3J8A4N	6 1/16	3 1/4	2 5/16	3 1/2	5/8	2 1/32	9/16	1/2	6 7/16		

** Holes in Tang



4JA SERIES

Terminal lugs, four cables, straight

E = 1 3/4"

Cable Range			H.T.	Catalog Number	BRONZE CONNECTORS										---									
Max.	Min.				Dimension in Inches (Approximate)										Dimension in Inches (Approximate)									
				A	B	C	D	F	G	H	J	W	Catalog Number	A	B	C	D	F	G	H	J	W		
4/0	1/0	2											AL4J4A2N	4 15/16	2	1 3/16	3 1/8	5/8	5/16	9/16	5/16	5 1/16		
4/0	1/0	4											AL4J4A4N	4 15/16	3	1 3/16	3 1/8	5/8	5/16	9/16	5/16	5 1/16		
4/0	2/0	2	4J4A2N	4 13/32	2	1	3 1/4	5/8	1/4	9/16	5/16	4 7/16												
4/0	2/0	4	4J4A4N	4 13/32	3	1	3 1/4	5/8	1/4	9/16	5/16	4 7/16												
350	4/0	2	4J5A2N	4 5/8	2	1 13/32	3 9/32	5/8	5/16	9/16	3/8	5 1/4	AL4J5A2N	5 5/16	2	1 3/8	3 3/8	5/8	13/32	9/16	3/8	5 13/16		
350	4/0	4	4J5A4N	4 5/8	3	1 13/32	3 9/32	5/8	5/16	9/16	3/8	5 1/4	AL4J5A4N	5 5/16	3	1 3/8	3 3/8	5/8	13/32	9/16	3/8	5 13/16		
500	350	2	4J6A2N	4 3/4	2 1/2	1 15/32	3 5/16	5/8	3/8	9/16	3/8	6	AL4J6A2N	5 5/8	2 1/2	1 5/8	3 3/8	5/8	15/32	9/16	3/8	6 5/8		
500	350	4	4J6A4N	4 3/4	4	1 15/32	3 5/16	5/8	3/8	9/16	3/8	6	AL4J6A4N	5 5/8	4	1 5/8	3 3/8	5/8	15/32	9/16	3/8	6 5/8		
750	500	2	4J7A2N	5 1/4	4	1 3/4	3 11/32	5/8	7/16	9/16	7/16	6 13/16	AL4J7A2N	5 15/16	4	1 15/16	3 3/8	5/8	5/8	9/16	7/16	7 5/8		
750	500	4	4J7A4N	5 1/4	4	1 3/4	3 11/32	5/8	7/16	9/16	7/16	6 13/16	AL4J7A4N	5 15/16	4	1 15/16	3 3/8	5/8	5/8	9/16	7/16	7 5/8		
1000	750	2	4J8A2N	5 5/8	4 1/2	2	3 3/8	5/8	1/2	9/16	1/2	8	AL4J8A2N	6 11/16	4 1/2	2 3/16	4 1/8	5/8	2 1/32	9/16	1/2	8 5/8		
1000	750	4	4J8A4N	5 5/8	4 1/2	2	3 3/8	5/8	1/2	9/16	1/2	8	AL4J8A4N	6 11/16	4 1/2	2 3/16	4 1/8	5/8	2 1/32	9/16	1/2	8 5/8		

** Holes in Tang