

"Jones Bond"™ system

DIRECT-BURIAL BONDING & GROUNDING

J32-DB
New Size
Rebar Clamp

- Ufer grounding / Concrete-encased electrode
- Swimming pools / spas
- Agricultural / livestock building
- Replaces exothermic welding



The only clamp specifically designed
for copper-to-rebar connections.



GREAVES

**2005 Code requires bonding
all "present" concrete-encased
electrodes
(Ufer grounding)
250.52 (A)(3).**



GREAVES

GREAVES EXCLUSIVE

"Jones Bond" System

BONDING & GROUNDING

Ufer grounding / Swimming pools / spas, Agricultural buildings and other difficult environments



JONES REBAR CLAMP

Use to connect solid copper bond/ground wire to rebar
Compact for easy coverage in gunite pool wall
For use on copper wire only

CATALOG NUMBER	WIRE RANGE	REBAR SIZE	
		NO.	INCH
J 29-DB	8 - 6 SOL	#3	3/8
J 30-DB	8 SOL - 4 STR	#4	1/2
J 31-DB	6 SOL - 2/0 STR	#5	5/8
J 32-DB	6 SOL - 4/0 STR	#4,5,6	1/2, 5/8, 3/4



Patent Pending

Direct Burial



UL Listed and CSA Certified for direct burial in earth or concrete.
Not for use on epoxy coated rebar.

BEAVER TOOTH LUG™ Lay-in Lug

Use to connect copper/ground wire to equipment
Copper body, stainless steel screw
For use on copper wire only

CATALOG NUMBER	WIRE RANGE	MOUNTING BOLT SIZE
BTL 4-DB*	#4 - 14 AWG	#10
BTL 414-DB*	#4 - 14 AWG	#1/4



* For tin-plating, add suffix "P". Tin plate for use on aluminum pool structure.

Direct Burial

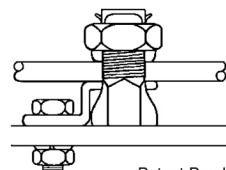


UL Listed 486D, CSA Certified for direct burial in earth or concrete

BUGLUG™ Lay-in Lug

Use to connect copper/ground wire to equipment
Heavy duty silicon bronze and copper, tin plated
For use on copper wire only

CATALOG NUMBER	WIRE MAX	MOUNTING BOLT SIZE
BL 6	#6	#10
BL 4	#4	1/4
BL 2	#2	1/4
BL 1/0	#1/0	5/16



Patent Pending

BL Series is tin-plated for use on aluminum pool structure.
Use of oxide-inhibitor is recommended.

Direct Burial



CSA NRTL/C Certified for direct burial in earth and concrete

PIPE/REBAR CLAMP

Cast bronze body
Silicon bronze screws
For use on copper wire only
Lay-in feature allows continuous run installation



Direct Burial



UL listed for direct burial in earth or concrete on copper wire.

CATALOG NUMBER	PIPE SIZE IPS	REBAR		CONDUCTOR RANGE MIN - MAX
		SIZE	INCH	
G1R-DB	1/2 - 1"	#3 - #8	3/8 - 1"	#10 - 2 AWG

PIPE CLAMP

Cast bronze body
Silicon bronze screws
For use on copper wire only



Direct Burial



UL Listed and CSA Certified for direct burial in earth and concrete

CATALOG NUMBER	PIPE SIZE IPS	CONDUCTOR RANGE MIN - MAX
G1S-DB	1/2 - 1"	#10 - 2 AWG

MESH-BUGS™

Use to connect copper conductor to wire mesh
Copper-alloy bronze construction
Sizes available for rolled (#10) and heavy (#6) mesh
UL listed for direct burial in earth and concrete



Direct Burial



UL listed for direct burial in earth or concrete on copper wire.

CATALOG NUMBER	MESH WIRE SIZE	COPPER COND. RANGE (AWG)
A2-DB	#10	#12STR - #8STR
A5-DB	#6	#8SOL - #4STR

GROUND ROD CLAMP

Cast bronze body
Silicon bronze bolt
For use with copper wire only
Direct burial in earth and concrete



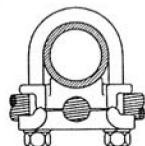
Direct Burial



UL Listed and CSA Certified for direct burial in earth and concrete

U-BOLT CLAMP

Use to connect wire to pipe, rod, or fence posts
parallel or perpendicular to pipe
Cast bronze body
Silicon bronze hardware
For use on copper wire only



Direct Burial

CSA Certified for direct burial in earth and concrete



STAINLESS STEEL HARDWARE

Use to mount BTL4-DB and BL Series
lay-in lugs to equipment
Sets of stainless steel hardware
Available in #10-24 and 1/4-20 sizes



Direct Burial

GREAVES CORPORATION

Clinton, CT 06413
Phone: 860-664-4505 Fax: 860-664-4546
www.greaves-usa.com