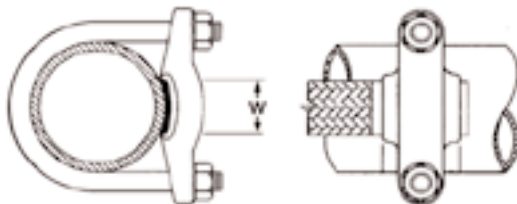


GROUNDING FLEXIBLE STRAP SYSTEM

PIPE CLAMPS FOR FLEXIBLE STRAPS

For grounding flat flexible strap to fence posts, gates or water pipe
Bronze high-copper alloy castings

For copper strap



CF SERIES

NAED NUMBER	CATALOG NUMBER	PIPE SIZE IPS	STRAP MAX W (IN)	EST. SHIPPING	
				WEIGHT (lbs)	UNIT
25710	CF 101	1	1	0.57	EA
25712	CF 121	1 ¹ / ₄	1	0.65	EA
25715	CF 151	1 ¹ / ₂	1	0.72	EA
25720	CF 201	2	1	0.78	EA
25725	CF 251	2 ¹ / ₂	1	0.95	EA
25730	CF 301	3	1	1.02	EA
25735	CF 351	3 ¹ / ₂	1	1.16	EA
25740	CF 401	4	1	1.22	EA
25750	CF 501	5	1	1.79	EA
25760	CF 601	6	1	2.30	EA



FLEXIBLE JUMPER STRAP CONNECTORS

Use to absorb expansion, misalignment, or motion of equipment

Use with CF Series clamps to bond fencepost to gate

Flexible flat woven tin-plated copper braid

Seamless high-conductivity tin-plated copper flat ferrules



FJ SERIES

NAED NUMBER	CATALOG NUMBER	EQUIV. WIRE SIZE (APPROX)	NOMINAL AMP RATING*		NOMINAL DIMENSIONS			EST. SHIPPING	
			INDOOR	OUTDOOR	L	W	T	WEIGHT (lbs)	UNIT
26870	FJ 200-18N	#1 AWG	200	245	18	1	1/8	0.47	EA
26880	FJ 300-18N	3/0 AWG	340	405	18	1	3/16	0.86	EA
26890	FJ 400-18N	4/0 AWG	360	430	18	1	1/4	1.23	EA

* Ampacity varies with service conditions such as environment, airflow, orientation, temperature rise, etc.

NEMA bolt pattern for (2) 1/2" bolts on 1³/₄" centers.

Other configurations and sizes available; consult factory.

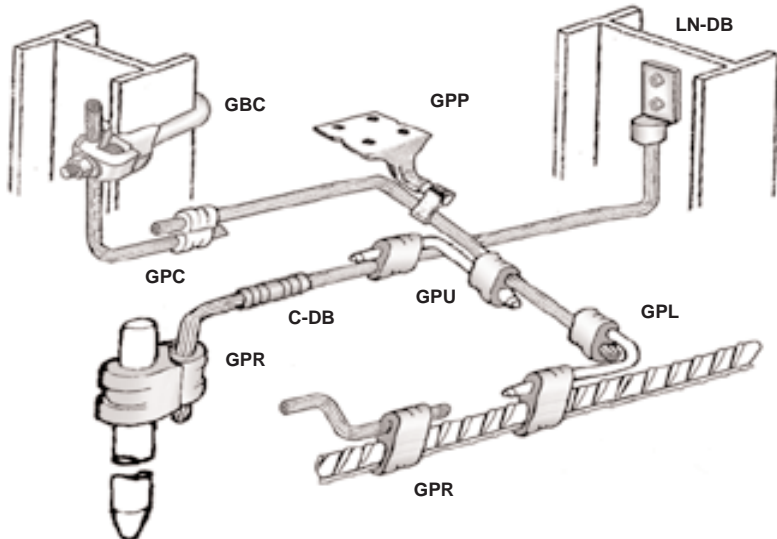


GROUND-PRES™

IRREVERSIBLE COMPRESSION SYSTEM

Irreversible compression "C tap" connectors for direct burial grounding grid applications

Direct Burial



Tap or lap-splice for wire-to-wire connections
GPC SERIES

CAUTION
Use of wash-off resistant oxide-inhibitor is recommended with all underground joints.

NAED NUMBER	CATALOG NUMBER	WIRE RANGE		DIE	CTN QTY	EST. SHIPPING	
		MAIN	TAP			WEIGHT (lbs)	UNIT
12946	GPC46	#4STR-6SOL	#6STR-6SOL	BG or 5/8	50	2.3	CTN
12944	GPC44		#4STR-4SOL		50	2.4	CTN
12926	GPC26	#2STR-2SOL	#6STR-8SOL	C	25	2.3	CTN
12922	GPC22		#2STR-2SOL		25	2.3	CTN
12920	GPC2020	2/0-1/0STR	2/0STR-1/0SOL	O	10	4.1	CTN
12942	GPC4020	4/0-3/0SOL	2/0STR-1/0SOL	F or D3	10	3.8	CTN
12940	GPC4040		4/0STR-3/0SOL		10	3.3	CTN



Tap or lap-splice for ground rod-to-wire or wire-to-wire connections

GPR SERIES

NAED NUMBER	CATALOG NUMBER	MAIN		TAP	DIE	CTN QTY	EST. SHIPPING	
		ROD	WIRE	WIRE			WEIGHT (lbs)	UNIT
12822	GPR122	1/2, 5/8	250MCM-1/0 STR	#2STR-4SOL	997	10	3.2	CTN
12823	GPR1220			2/0-1/0STR		10	3.0	CTN
12824	GPR1225			250MCM-3/0STR		10	2.6	CTN
12834	GPR342	5/8, 3/4	500-250MCM	#2STR-4SOL	998	10	4.7	CTN
12835	GPR3420			2/0-1/0STR		10	4.6	CTN
12836	GPR3425			250MCM-3/0STR		10	4.2	CTN
12837	GPR3450			500MCM3/0STR		999 or 1011	5	5.0



Perpendicular configuration for ground rod-to-wire or wire-to-wire connections

GPL SERIES

NAED NUMBER	CATALOG NUMBER	ROD	A		B	DIE	CTN QTY	EST. SHIPPING	
			WIRE	WIRE	WIRE			A	B
12722	GPL22	—	#2STR-6SOL	#2STR-6SOL	O	O	4	1.8	CTN
12723	GPL122	1/2, 5/8	250MCM-1STR	#2STR-6SOL	997	O	4	2.3	CTN
12724	GPL1225		250MCM-#2STR	250MCM-#2	997	997	2	1.7	CTN
12734	GPL342	5/8, 3/4	500-250MCM	#2STR-6SOL	998	O	2	2.2	CTN
12735	GPL3425			250MCM-#2	998	998	2	2.2	CTN
12736	GPL3450			500-250MCM	999	999	2	3.6	CTN



Hydraulic tool required for installation for all except GPL22.

GROUND-PRES™ IRREVERSIBLE COMPRESSION SYSTEM

COMPRESSION GROUND TERMINAL

Irreversible compression terminal for direct burial grounding grid applications
Seamless high-conductivity copper
NEMA bolt spacing - for 1/2" bolts on 1 3/4" centers
Pre-filled with oxide inhibitor and capped

Direct Burial

Copper wire only

L-NDB SERIES

NAED NUMBER	CATALOG NUMBER	WIRE SIZE	U-TYPE DIE		CTN QTY	EST. SHIPPING	
			COLOR	INDEX		WEIGHT (lbs)	UNIT
34100	L10NDB	1/0	PINK	12/348	10	1.59	CTN
34200	L20NDB	2/0	BLACK	13	10	1.98	CTN
34300	L30NDB	3/0	ORANGE	14	10	2.24	CTN
34400	L40NDB	4/0	PURPLE	15	10	2.76	CTN
34250	L250NDB	250MCM	YELLOW	16	10	3.54	CTN
34350	L350NDB	350MCM	RED	18/324	6	3.12	CTN
34500	L500NDB	500MCM	BROWN	20/299	6	5.00	CTN



COMPRESSION GROUND SPLICE

Irreversible compression splice for direct burial grounding applications
Seamless high-conductivity copper
Two inspection holes, one for each wire
Pre-filled with oxide-inhibitor and capped

C-DB SERIES

NAED NUMBER	CATALOG NUMBER	WIRE SIZE	U-TYPE DIE		CTN QTY	EST. SHIPPING	
			COLOR	INDEX		WEIGHT (lbs)	UNIT
34101	C10DB	1/0	PINK	12/348	10	1.20	CTN
34201	C20DB	2/0	BLACK	13	10	1.45	CTN
34301	C30DB	3/0	ORANGE	14	10	1.56	CTN
34401	C40DB	4/0	PURPLE	15	10	1.71	CTN
34251	C250DB	250MCM	YELLOW	16	10	2.50	CTN
34351	C350DB	350MCM	RED	18/324	6	1.09	CTN
34501	C500DB	500MCM	BROWN	20/299	6	4.00	CTN



COMPRESSION GROUND PLATE

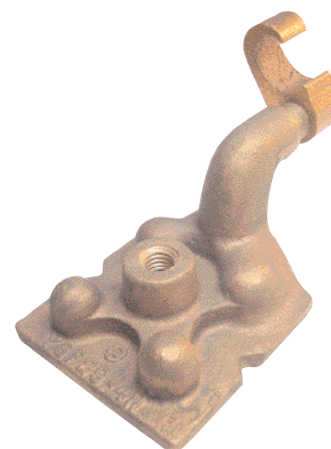
Irreversible compression ground plate for direct burial grounding applications
Body cast of high-strength, high-conductivity high-copper alloy
NEMA spacing for tapped lug-mounting holes for 1/2" bolts on 1 3/4" centers
Copper compression element of pure wrought copper, pre-filled with oxide-inhibitor
Tapped positioning hole on underside of plate
Plastic plugs provided in tapped holes

GPP SERIES

NAED NUMBER	CATALOG NUMBER	WIRE RANGE	DIE	MOUNTING HOLES	POSITIONING HOLE	CTN QTY	EST. SHIPPING	
							WEIGHT (lbs)	UNIT
12622	GPP250-2N	250MCM-#2	U997*	(2) 1/2-13	3/8-16**	1	2.50	EA
12624	GPP250-4N			(4) 1/2-13		1	2.73	EA

*PT6515 adapter required with some tools.

** 3/8-16 is standard; others available.





GROUNDING

I-BEAM GROUNDING CLAMPS

To connect grounding electrode conductor to structural I-beam or metal frame
 Can also be used on fence posts, trailer frames, cable tray
 Series covers a wide range of beam and wire sizes
 Eliminates drilling structural steel
 Replaces exothermic welding

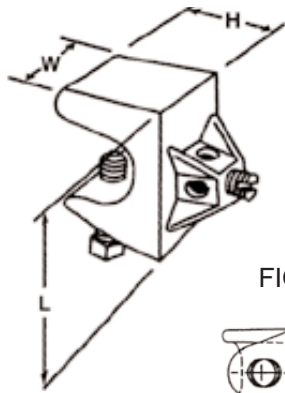


FIG. 1

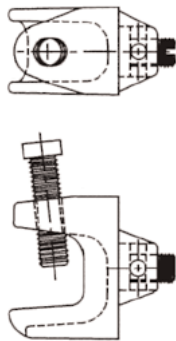


FIG. 2

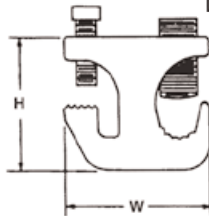
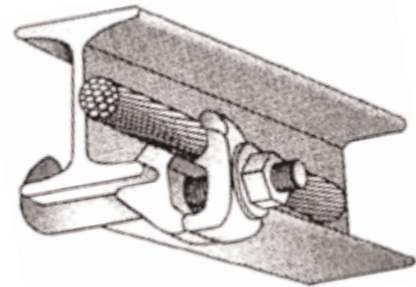


FIG. 3



GBCH

High strength copper-alloy bronze casting
 Steel hardware, zinc plated
 Screw penetrates paint or oxide
 Use to terminate wire
 For use with copper wire only
 UL (CU only)

GBC250A

Aluminum body, tin-plated
 Steel hardware, zinc plated
 Screw penetrates paint or oxide
 Dual-rated for copper or aluminum wire
 Side-entry allows continuous loop
 Also for sheet metal cable tray
 UL (CUAL), CSA (CU only)

GBC40

High strength copper-alloy bronze casting
 Steel hardware, zinc plated
 Clean beam surface for electrical contact
 Side-entry allows continuous loop run
 Shape of hook may vary by size
 For use with copper wire only
 CSA (CU only)

GBC SERIES

NAED NUMBER	CATALOG NUMBER	BEAM FLANGE (IN)		WIRE RANGE MAX - MIN	DIMENSIONS (IN)			FIG.	EST. SHIPPING	
		F	TH		W	L	H		WEIGHT (lbs)	UNIT
27190	GBCH6	-	5/8 MAX	#6 - #14AWG	1	1 1/8	1 3/16	1	0.29	EA
27191	GBC250A	-	1/2 MAX	250MCM - #6	2	7/8	1 3/4	2	0.27	EA
27192	GBC40-2	2	3/16	4/0 - #4STR	1	4 1/2	1 3/4	3	0.52	EA
27194	GBC40-4	4	1/4	4/0 - #4STR	1	6 1/2	1 3/4	3	0.57	EA
27196	GBC40-6	6	5/16	4/0 - #4STR	1	8 1/2	1 3/4	3	0.62	EA
27198	GBC40-8	8	3/8	4/0 - #4STR	1	10 1/2	1 3/4	3	0.67	EA

2005 NEC 250.52(A)(2) requires bonding all "present" grounding electrodes, including grounded I-Beams.

GROUNDING

ADJUSTABLE GROUND STRAPS

Adjustable ground straps are made from pure annealed copper

Bolts, nuts and washers are plated steel

Four sizes cover a ground pipe range of 3/8" to 4"

For copper wire #14-6SOL

Ground wire connection can be soldered or solderless

NAED NUMBER	CATALOG NUMBER	WATER PIPE SIZE (IPS)	CTN QTY	EST. SHIPPING	
				WEIGHT (lbs)	UNIT
HEAVY TYPE .050" THICK, 3/4" WIDE					
26000	D 480	3/8 - 1	50	5.14	CTN
26010	D 481	3/8 - 2	50	7.26	CTN
26020	D 482	3/8 - 3	25	4.76	CTN
26030	D 483	3/8 - 4	25	5.65	CTN
LIGHT TYPE .025" THICK, 3/4" WIDE					
26040	D 484	3/8" - 1"	50	3.76	CTN
26050	D 485	3/8" - 2"	50	4.50	CTN
26060	D 486	3/8" - 3"	25	2.76	CTN
26070	D 487	3/8" - 4"	25	3.50	CTN

PLATING: For tin plating add suffix letter "P" to CATALOG NUMBERS.



PERFORATED COPPER STRAP

Pure annealed 16 gauge copper

Holes accommodate 1/4" screws, spaced 1/2" on center

Strap has full round edge

NAED NUMBER	CATALOG NUMBER	WIDTH (IN)	THICKNESS (IN)	COIL LENGTH	EST. SHIPPING	
					WEIGHT (lbs)	UNIT
70550	D 050	3/4	.050	10 FT	1.25	COIL

For longer coils consult factory for availability.



FLEXIBLE BRAID

Flexible flat-woven tin-plated copper braid

Use to absorb expansion, misalignment, motion, or vibration of equipment

Use for bonding or grounding jumpers

Use multiple layers to increase ampacity



FB SERIES

NAED NUMBER	CATALOG NUMBER	CIRCULAR MIL AREA	EQUIV. WIRE SIZE (APPROX)	NOMINAL AMP RATING*		DIMENSIONS		COIL LENGTH	EST. SHIPPING	
				INDOOR	OUTDOOR	W	T		WEIGHT (lbs)	UNIT
26810	FB60	9.6 kcmil	#10 AWG	40	60	1/2	1/32	250 FT	7.0	COIL
26815	FB90	24 kcmil	#6 AWG	72	90	1/2	3/32	250 FT	2.0	COIL
26820	FB200	77 kcmil	#1 AWG	200	245	1	1/8	10 FT	2.5	COIL
26830	FB300	154 kcmil	3/0 AWG	340	405	1	3/16	10 FT	5.3	COIL
26840	FB400	231 kcmil	4/0 AWG	360	430	1	5/32	10 FT	7.6	COIL

* Ampacity varies with service conditions such as environment, airflow, orientation, temperature rise, etc.

Also available as finished connectors with endpads; see FJ Series.

Also available in bulk quantities.