



POWER DISTRIBUTION

INSULATED MULTI-CABLE

Insulated with rugged high-dielectric rubber/vinyl coating

Pre-filled with oxide-inhibitor

Easy re-entry for changes, inspection, or troubleshooting

Plugs marked with connector max wire size for easy identification

For flex/extra-flex high-strand wire, first install a PT-FX Shoo-Pin™ Adapter

UL/CSA certified through 600MCM size

Dual-Rated

CU9AL

600V

90°C

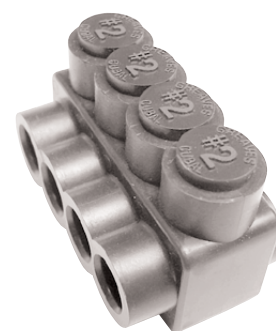


USA SERIES

One-Side Entry

| NAED NUMBER | CATALOG NUMBER | WIRE PORTS | WIRE RANGE | ALLEN HEX | DIMENSIONS | | CTN QTY | EST. SHIPPING | |
|-------------|----------------|------------|------------|-----------|------------|--------|---------|---------------|------|
| | | | | | LENGTH | HEIGHT | | WEIGHT (lbs) | UNIT |
| 13443 | USA 4-3 | 3 | | | 1.54 | | 12 | 1.30 | CTN |
| 13444 | USA 4-4 | 4 | #4 - 14 | 1/8 | 1.97 | 1.45 | 6 | 0.89 | CTN |
| 13446 | USA 4-6 | 6 | | | 2.82 | | 4 | 0.87 | CTN |
| 13448 | USA 4-8 | 8 | | | 3.65 | | 4 | 1.11 | CTN |
| 13453 | USA 2-3 | 3 | | | 1.59 | | 12 | 1.34 | CTN |
| 13454 | USA 2-4 | 4 | #2 - 14 | 5/32 | 1.99 | 1.45 | 6 | 0.90 | CTN |
| 13456 | USA 2-6 | 6 | | | 2.87 | | 4 | 0.90 | CTN |
| 13458 | USA 2-8 | 8 | | | 3.69 | | 4 | 1.13 | CTN |
| 13423 | USA 2/0-3 | 3 | | | 2.34 | | 6 | 1.21 | CTN |
| 13424 | USA 2/0-4 | 4 | | | 3.01 | | 6 | 1.53 | CTN |
| 13425 | USA 2/0-5 | 5 | 2/0 - #14 | 7/32 | 3.69 | 1.50 | 4 | 1.23 | CTN |
| 13426 | USA 2/0-6 | 6 | | | 4.36 | | 4 | 1.44 | CTN |
| 13427 | USA 2/0-7 | 7 | | | 4.74 | | 3 | 1.28 | CTN |
| 13428 | USA 2/0-8 | 8 | | | 5.41 | | 3 | 1.48 | CTN |
| 13433 | USA 3/0-3 | 3 | 3/0 - #6 | 3/16 | 2.65 | 1.86 | 6 | 1.50 | CTN |
| 13599 | USA 250-3 | 3 | | | 2.99 | | 4 | 1.51 | CTN |
| 13600 | USA 250-4 | 4 | | | 3.85 | | 4 | 2.09 | CTN |
| 13601 | USA 250-5 | 5 | 250 - #6 | 5/16 | 4.71 | 2.10 | 3 | 1.96 | CTN |
| 13605 | USA 250-6 | 6 | | | 5.57 | | 3 | 2.33 | CTN |
| 13606 | USA 250-7 | 7 | | | 6.43 | | 2 | 1.91 | CTN |
| 13610 | USA 250-8 | 8 | | | 7.29 | | 2 | 2.01 | CTN |
| 13614 | USA 350-3 | 3 | | | 3.52 | | 4 | 2.43 | CTN |
| 13615 | USA 350-4 | 4 | | | 4.57 | | 3 | 2.54 | CTN |
| 13616 | USA 350-5 | 5 | 350 - #6 | 5/16 | 5.62 | 2.50 | 3 | 3.12 | CTN |
| 13620 | USA 350-6 | 6 | | | 6.67 | | 2 | 2.44 | CTN |
| 13621 | USA 350-7 | 7 | | | 7.72 | | 2 | 2.74 | CTN |
| 13625 | USA 350-8 | 8 | | | 8.77 | | 2 | 3.30 | CTN |
| 13663 | USA 600-3 | 3 | | | 4.89 | | 3 | 3.02 | CTN |
| 13664 | USA 600-4 | 4 | | | 5.63 | | 2 | 2.15 | CTN |
| 13665 | USA 600-5 | 5 | 600 - #4 | 5/16 | 7.11 | 2.90 | 2 | 3.30 | CTN |
| 13666 | USA 600-6 | 6 | | | 8.47 | | 2 | 3.89 | CTN |
| 13667 | USA 600-7 | 7 | | | 9.83 | | 2 | 4.43 | CTN |
| 13668 | USA 600-8 | 8 | | | 11.18 | | 2 | 5.26 | CTN |
| 13644 | USA 750-3 | 3 | | | 4.90 | | 3 | 4.52 | CTN |
| 13645 | USA 750-4 | 4 | | | 6.19 | | 1 | 1.41 | EA |
| 13646 | USA 750-5 | 5 | 750 - 250 | 5/16 | 7.75 | 3.60 | 1 | 2.61 | EA |
| 13650 | USA 750-6 | 6 | | | 9.18 | | 1 | 3.04 | EA |
| 13651 | USA 750-7 | 7 | | | 10.60 | | 1 | 3.44 | EA |
| 13655 | USA 750-8 | 8 | | | 12.03 | | 1 | 3.91 | EA |

All wires enter same side



Other sizes and types available, consult factory.



POWER DISTRIBUTION

INSULATED MULTI-CABLE

Insulated with rugged high-dielectric rubber/vinyl coating
Pre-filled with oxide-inhibitor

Easy re-entry for changes, inspection, or troubleshooting

Plugs marked with connector max wire size for easy identification

For flex/extra-flex high-strand wire, first install a PT-FX Shoo-Pin™ Adapter

Dual-Rated

CU9AL

90°C 600V

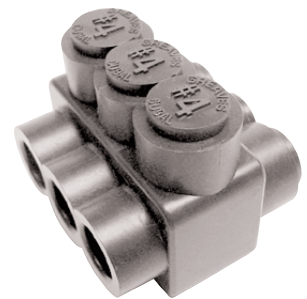


USAD SERIES

Optional-Side Entry

| NAED NUMBER | CATALOG NUMBER | WIRE PORTS | WIRE RANGE | ALLEN HEX | DIMENSIONS | | CTN QTY | EST. SHIPPING | |
|-------------|----------------|------------|------------|-----------|------------|--------|---------|---------------|------|
| | | | | | LENGTH | HEIGHT | | WEIGHT (lbs) | UNIT |
| 13843 | USAD 4-3 | 3 | | | 1.54 | | 12 | 1.39 | CTN |
| 13844 | USAD 4-4 | 4 | | | 1.97 | | 6 | 0.91 | CTN |
| 13846 | USAD 4-6 | 6 | #4 - 14 | 1/8 | 2.82 | 1.45 | 3 | 0.91 | CTN |
| 13848 | USAD 4-8 | 8 | | | 3.65 | | 3 | 0.99 | CTN |
| 13853 | USAD 2-3 | 3 | | | 1.59 | | 12 | 1.43 | CTN |
| 13854 | USAD 2-4 | 4 | | | 1.99 | | 6 | 0.96 | CTN |
| 13856 | USAD 2-6 | 6 | #2 - 14 | 5/32 | 2.87 | 1.45 | 4 | 0.93 | CTN |
| 13858 | USAD 2-8 | 8 | | | 3.69 | | 4 | 1.21 | CTN |
| 13823 | USAD 2/0-3 | 3 | | | 2.34 | | 6 | 1.23 | CTN |
| 13824 | USAD 2/0-4 | 4 | | | 3.01 | | 6 | 1.56 | CTN |
| 13825 | USAD 2/0-5 | 5 | | | 3.69 | | 4 | 1.32 | CTN |
| 13826 | USAD 2/0-6 | 6 | | | 4.36 | | 4 | 1.60 | CTN |
| 13827 | USAD 2/0-7 | 7 | 2/0 - #14 | 7/32 | 5.05 | 1.50 | 3 | 1.31 | CTN |
| 13828 | USAD 2/0-8 | 8 | | | 5.72 | | 3 | 1.51 | CTN |
| 13829 | USAD 2/0-9 | 9 | | | 6.37 | | 1 | 0.65 | EA |
| 13830 | USAD 2/0-10 | 10 | | | 7.03 | | 1 | 0.85 | EA |
| 13831 | USAD 2/0-11 | 11 | | | 7.76 | | 1 | 0.92 | EA |
| 13832 | USAD 2/0-12 | 12 | | | 8.40 | | 1 | 1.00 | EA |
| 13884 | USAD 3/0-4 | 4 | 3/0 - #6 | 3/16 | 3.42 | 1.86 | 6 | 2.21 | CTN |
| 13899 | USAD 250-3 | 3 | | | 2.99 | | 4 | 1.61 | CTN |
| 13900 | USAD 250-4 | 4 | | | 3.85 | | 4 | 2.28 | CTN |
| 13903 | USAD 250-5 | 5 | | | 4.71 | | 3 | 2.16 | CTN |
| 13905 | USAD 250-6 | 6 | | | 5.57 | | 3 | 2.47 | CTN |
| 13907 | USAD 250-7 | 7 | | | 6.43 | | 2 | 1.87 | CTN |
| 13910 | USAD 250-8 | 8 | 250 - #6 | 5/16 | 7.29 | 2.10 | 2 | 2.20 | CTN |
| 13911 | USAD 250-9 | 9 | | | 8.15 | | 1 | 1.31 | EA |
| 13908 | USAD 250-10 | 10 | | | 9.01 | | 1 | 1.50 | EA |
| 13909 | USAD 250-11 | 11 | | | 9.87 | | 1 | 1.64 | EA |
| 13912 | USAD 250-12 | 12 | | | 10.73 | | 1 | 1.89 | EA |
| 13914 | USAD 350-3 | 3 | | | 3.52 | | 4 | 2.61 | CTN |
| 13915 | USAD 350-4 | 4 | | | 4.57 | | 3 | 2.76 | CTN |
| 13918 | USAD 350-5 | 5 | | | 5.62 | | 3 | 3.31 | CTN |
| 13920 | USAD 350-6 | 6 | | | 6.67 | | 2 | 2.69 | CTN |
| 13922 | USAD 350-7 | 7 | | | 7.72 | | 2 | 3.00 | CTN |
| 13925 | USAD 350-8 | 8 | 350 - #6 | 5/16 | 8.77 | 2.50 | 2 | 3.36 | CTN |
| 13926 | USAD 350-9 | 9 | | | 9.82 | | 1 | 2.08 | EA |
| 13923 | USAD 350-10 | 10 | | | 10.87 | | 1 | 2.30 | EA |
| 13924 | USAD 350-11 | 11 | | | 11.92 | | 1 | 2.34 | EA |
| 13927 | USAD 350-12 | 12 | | | 12.97 | | 1 | 2.63 | EA |
| 13963 | USAD 600-3 | 3 | | | 4.39 | | 3 | 3.36 | CTN |
| 13964 | USAD 600-4 | 4 | | | 5.63 | | 2 | 3.00 | CTN |
| 13965 | USAD 600-5 | 5 | | | 7.11 | | 2 | 3.66 | CTN |
| 13966 | USAD 600-6 | 6 | | | 8.47 | | 2 | 4.36 | CTN |
| 13967 | USAD 600-7 | 7 | | | 9.83 | | 2 | 5.38 | CTN |
| 13968 | USAD 600-8 | 8 | 600 - #4 | 5/16 | 11.18 | 2.90 | 2 | 5.62 | CTN |
| 13969 | USAD 600-9 | 9 | | | 12.53 | | 1 | 3.11 | EA |
| 13970 | USAD 600-10 | 10 | | | 13.88 | | 1 | 3.66 | EA |
| 13971 | USAD 600-11 | 11 | | | 15.23 | | 1 | 3.88 | EA |
| 13972 | USAD 600-12 | 12 | | | 16.58 | | 1 | 4.28 | EA |

Wire entry optional
from either side



Other sizes and types available, consult factory.

www.greaves-usa.com

11 Heritage Park, Clinton, CT 06413 • Phone 860-664-4505 • Fax 860-664-4546
TOLL FREE 1-800-243-1130 (Outside CT)



POWER DISTRIBUTION

INSULATED MULTI-CABLE

Insulated with rugged high-dielectric rubber/vinyl coating
 Pre-filled with oxide-inhibitor
 Easy re-entry for changes, inspection, or troubleshooting
 Plugs marked with connector max wire size for easy identification
 For flex/extra-flex high-strand wire, first install a PT-FX Shoo-Pin™ Adapter

Dual-Rated

CU9AL
 600V
 90°C

USAD SERIES

Optional-Side Entry

Wire entry optional
 from either side

| NAED NUMBER | CATALOG NUMBER | WIRE PORTS | WIRE RANGE | ALLEN HEX | DIMENSIONS | | CTN QTY | EST. SHIPPING | |
|-------------|----------------|------------|------------|-----------|------------|--------|---------|---------------|------|
| | | | | | LENGTH | HEIGHT | | WEIGHT (lbs) | UNIT |
| 13944 | USAD 750-3 | 3 | | | 4.90 | | 3 | 4.97 | CTN |
| 13945 | USAD 750-4 | 4 | | | 6.19 | | 1 | 2.21 | EA |
| 13948 | USAD 750-5 | 5 | | | 7.75 | | 1 | 2.66 | EA |
| 13950 | USAD 750-6 | 6 | | | 9.18 | | 1 | 3.26 | EA |
| 13952 | USAD 750-7 | 7 | 750 - 250 | 5/16 | 10.60 | 3.60 | 1 | 3.69 | EA |
| 13955 | USAD 750-8 | 8 | | | 12.03 | | 1 | 4.23 | EA |
| 13956 | USAD 750-9 | 9 | | | 13.46 | | 1 | 4.68 | EA |
| 13953 | USAD 750-10 | 10 | | | 14.88 | | 1 | 5.11 | EA |
| 13954 | USAD 750-11 | 11 | | | 16.30 | | 1 | 5.56 | EA |
| 13957 | USAD 750-12 | 12 | | | 17.73 | | 1 | 5.91 | EA |



SPARE PLUGS

Spare plugs for screw cover or wire ports
 Marked with connector max wire size for easy identification

PWS/PSP SERIES

| NAED NUMBER | CATALOG NUMBER | CONN SIZE | CTN QTY | EST. SHIPPING | |
|------------------------------|----------------|-----------|---------|---------------|------|
| | | | | WEIGHT (lbs) | UNIT |
| WIRE & SCREW PORT | | | | | |
| 13724 | PWS 4 | #4 | 12 | 0.04 | CTN |
| 13722 | PWS 2 | #2 | 12 | 0.04 | CTN |
| 13720 | PWS 2/0 | 2/0 | 12 | 0.06 | CTN |
| 13725 | PWS 250 | 250 | 6 | 0.07 | CTN |
| 13735 | PWS 350 | 350 | 6 | 0.08 | CTN |
| 13760 | PWS 600 | 600 | 6 | 0.08 | CTN |
| WIRE PORT | | | | | |
| 13775 | PWP 750 | 750 | 3 | 0.09 | CTN |
| SCREW PORT | | | | | |
| 13776 | PSP 750 | 750 | 3 | 0.09 | CTN |

