



## GROUNDING

### U-BOLT GROUND CLAMP CONNECTORS

Heavy Duty – Bronze Castings for Strength and Ruggedness

Use to connect wire to pipe, rod, or fence posts

High copper alloy bronze castings with silicon bronze hardware

Suitable for direct burial in earth or concrete

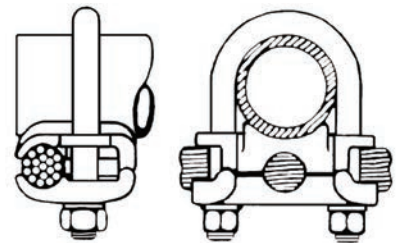
### Direct Burial

Continuous Loop  
Copper wire only



### C100 SERIES

NAED NUMBER	CATALOG NUMBER	ROD SIZE (IN)	PIPE SIZE IPS (O.D.)	CABLE RANGE	EST. SHIPPING	
					WEIGHT (lbs)	UNIT
25000	C 100	1/2	1/4" (.54)	#4 - 8	0.39	EA
25020	• C 101			2/0 - #4	0.48	EA
25040	C 102			250 - 2/0	0.68	EA
25060	C 103	5/8 - 3/4	3/8" (.675)	#4 - 8	0.45	EA
25080	• C 104			2/0 - #4	0.54	EA
25100	• C 105			250 - 2/0	0.66	EA
25120	C 106			500 - 300	1.48	EA
25140	C 107			#4 - 8	0.51	EA
25160	• C 108	7/8 - 1	1/2" - 3/4" (.84) - (1.05)	2/0 - #4	0.49	EA
25180	C 109			250 - 2/0	0.60	EA
25200	• C 110			500 - 300	0.93	EA
25240	C 113			#4 - 8	0.44	EA
25260	• C 114	-	1" (1.315)	2/0 - #4	0.66	EA
25280	• C 115			250 - 2/0	0.66	EA
25300	C 116			500 - 300	1.72	EA
25340	• C 119	-	1 1/4" (1.66)	#4 - 8	0.77	EA
25360	• C 120			2/0 - #4	0.80	EA
25380	• C 121			250 - 2/0	0.82	EA
25400	C 122			500 - 300	2.01	EA
25440	C 125	-	1 1/2" (1.90)	#4 - 8	0.75	EA
25460	C 126			2/0 - #4	0.80	EA
25480	• C 127			250 - 2/0	0.98	EA
25500	• C 128			500 - 300	1.56	EA
25540	• C 131			#4 - 8	0.80	EA
25560	• C 132	-	2" (2.375)	2/0 - #4	0.99	EA
71200	• C 133			250 - 2/0	1.06	EA
71205	C 134	500 - 300	1.90	EA		
71215	C 136	-	2 1/2" (2.875)	#4 - 8	1.07	EA
71220	C 137			2/0 - #4	1.21	EA
71225	C 138			250 - 2/0	1.69	EA
71230	C 139			500 - 300	2.50	EA
71240	C 141			#4 - 8	1.26	EA
71245	• C 142	-	3" (3.5)	2/0 - #4	1.45	EA
71250	C 143			250 - 2/0	1.85	EA
71255	C 144			500 - 300	2.89	EA
71265	C 146			#4 - 8	1.40	EA
71270	C 147	-	3 1/2" (4.0)	2/0 - #4	1.60	EA
71275	C 148			250 - 2/0	2.01	EA
71280	C 149			500 - 300	3.00	EA
71290	C 151			#4 - 8	1.97	EA
71300	• C 152	-	4" (4.5)	2/0 - #4	1.97	EA
71305	C 153			250 - 2/0	2.23	EA
71310	C 154			500 - 300	3.30	EA



Connects one wire parallel or perpendicular to rod or pipe

### Heavy Duty

Pipe sizes 1/4" to 4" IPS  
Wire #8 to 500 MCM

### Applications

- Water Pipe
- Metallic Fencing
- Ground Rods
- Grounding Grids
- Rebar

For sizes not listed contact factory for delivery.  
PLATING: For tin plating add suffix "P" to catalog numbers.  
Sizes with "-" before catalog number are CSA only.



## GROUNDING

### LARGE PIPE CLAMPS

Extra heavy-duty bronze castings for strength and ruggedness

Use to connect wire to pipe or fence posts

Clamp first to pipe, then attach wire with cover piece

Separate bolts for mounting on pipe and connecting wire

High copper alloy bronze castings with silicon bronze or stainless steel hardware

Suitable for direct burial in earth or concrete

### Direct Burial

Continuous Loop

Copper wire only

### CG SERIES

NAED NUMBER	CATALOG NUMBER	PIPE SIZE IPS (O.D.)	CABLE RANGE	FIG.	EST. SHIPPING	
					WEIGHT (lbs)	UNIT
25624	CG 2050	2" (2.375)	500 - 300	1	1.6	EA
25623	CG 2052		500 - #2	2	2.0	EA
25620	CG 2010		1000 - #2	2	5.8	EA
25625	CG 2604	2-1/2" (2.875)	#4 - 8	1	.7	EA
25626	CG 2622		2/0 - #4	1	.9	EA
25627	CG 2625		250 - 2/0	1	1.1	EA
25628	CG 2650		500 - 300	1	1.8	EA
25629	CG 2610		1000 - #2	2	6.0	EA
25633	CG 3125		3" (3.5)	250 - 2/0	1	1.3
25634	CG 3150	500 - 300		1	2.4	EA
25635	CG 3175	750 - 550		1	3.5	EA
25630	CG 3110	1000 - #2		2	6.6	EA
25673	CG 3625	3-1/2" (4.0)	250 - 2/0	1	1.3	EA
25674	CG 3650		500 - 300	1	2.4	EA
25675	CG 3675		750 - 550	1	3.6	EA
25676	CG 3610		1000 - #2	2	7.3	EA
25677	CG 4125	4" (4.5)	250 - 2/0	1	1.5	EA
25678	CG 4150		500 - 300	1	2.6	EA
25679	CG 4175		750 - 550	1	3.8	EA
25680	CG 4110		1000 - #2	2	8.5	EA
25647	CG 4625	4-1/2" (5.0)	250 - #6	2	7.9	EA
25648	CG 4650		500 - #2	2	8.6	EA
25649	CG 4610		1000 - #2	2	8.9	EA
25651	CG 5122	5" (5.563)	2/0 - #4	1	1.5	EA
25652	CG 5125		250 - 2/0	1	2.0	EA
25653	CG 5150		500 - 300	1	3.1	EA
25654	CG 5175		750 - 550	1	4.3	EA
25650	CG 5110		1000 - #2	2	9.5	EA
25661	CG 6122	6" (6.625)	2/0 - #4	1	1.8	EA
25662	CG 6125		250 - 2/0	1	2.0	EA
25663	CG 6150		500 - 300	1	3.4	EA
25664	CG 6175		750 - 550	1	4.7	EA
25660	CG 6110		1000 - #2	2	10.8	EA
25670	CG 7110		6" Cast Iron (7.1 - 7.3)	1000 - #2	2	7.8
25681	CG 8125	8" (8.625)	250 - 2/0	1	2.4	EA
25682	CG 8150		500 - 300	1	4.5	EA
25683	CG 8175		750 - 550	1	5.3	EA
25689	CG 8110		1000 - #2	2	7.8	EA
25690	CG 1010		10" (10.75)	1000 - #2	2	6.5
25692	CG 1210	12" (12.75)	1000 - #2	2	8.4	EA
25694	CG 1410	14" (14.0)	1000 - #2	2	11.0	EA
25696	CG 1610	16" (16.0)	1000 - #2	2	15.0	EA

Sizes for other O.D. or circumference available. For sizes not listed contact factory for delivery.

For tin plating add suffix letter "P" to catalog numbers.

Figure 2 also available with Tork-Away™ Security Hardware to assure required torque and provide tamper resistance. Add "TA" to catalog number and contact factory for availability and price.

Large pipe sizes  
2" to 16" IPS

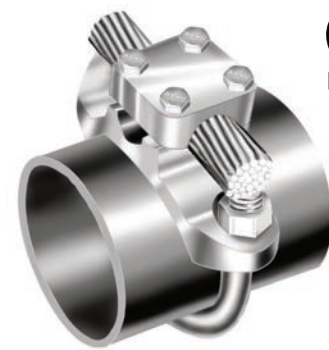


Figure 1

Connects one wire parallel  
or perpendicular to pipe

Large wire sizes  
to 1000MCM



Figure 2  
Not UL listed

Connects one wire parallel to pipe



# GREAVES



## GROUNDING

### U-BOLT GROUND CLAMPS

Heavy Duty – Bronze castings for strength and ruggedness

High copper alloy bronze castings with stainless steel U-bolts and hardware

Superior range-taking capability allows six pipe clamp sizes to supplant dozens of similar clamps

Suitable replacement for many Greaves C, CW, and CS series U-bolt clamps, see cross reference

Accepts one or two cables, either parallel or perpendicular to pipe or rod

UL listed for both grounding and lightning protection

Suitable for direct burial in earth or concrete





### Direct Burial

Continuous Loop  
Copper wire only



### CH SERIES

### Two-Wire Parallel or Perpendicular

NAED NUMBER	CATALOG NUMBER	CONDUCTOR RANGE WITH 1 OR 2* CABLES	CONDUCTOR RANGE W/ 2 UNEQUAL CABLES	PIPE SIZE IPS (OD)	EST. SHIPPING		
					WEIGHT (lbs)	UNIT	
24509	CH 109	250 MCM - #6 SOL	250 MCM - #2 SOL OR 1/0 AWG - #6 SOL	1/4 - 3/4 (.375 - 1)	0.5	EA	 1 wire parallel to pipe
24521	CH 121	250 MCM - #6 SOL	250 MCM - #2 SOL OR 1/0 AWG - #6 SOL	1/2 - 1-1/2 (.75 - 1.7)	0.6	EA	
24533	CH 133	250 MCM - #6 SOL	250 MCM - #2 SOL OR 1/0 AWG - #6 SOL	3/4 - 2 (1 - 2.4)	0.7	EA	
24543	CH 143	250 MCM - #6 SOL	250 MCM - #2 SOL OR 1/0 AWG - #6 SOL	2 - 3 (2.25 - 3.5)	1.0	EA	
24553	CH 153	250 MCM - #6 SOL	250 MCM - #2 SOL OR 1/0 AWG - #6 SOL	3 - 4 (3.2 - 4.5)	1.25	EA	
24663	CH 163	250 MCM - #6 SOL	250 MCM - #2 SOL OR 1/0 AWG - #6 SOL	5 - 6 (5.63 - 6.63)	1.75	EA	

\*Same size.

Also available with Tork-Away™ Security Hardware to assure required torque and provide tamper-resistant conical. Add "TA" to Cat No. and contact factory for price and availability.



## GROUNDING

### U-BOLT GROUND CLAMP CONNECTORS

Heavy Duty – Bronze castings for strength and ruggedness

Use to connect wire to pipe or fence posts

High copper alloy bronze castings with silicon bronze hardware

Suitable for direct burial in earth or concrete

**Direct Burial**

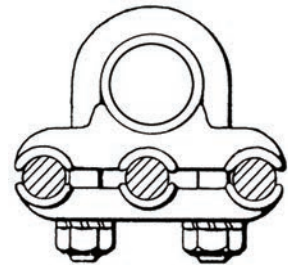
Continuous Loop

Copper wire only

### CZ SERIES

### Three-Wire Parallel

NAED NUMBER	CATALOG NUMBER	ROD SIZE (IN)	WATER PIPE SIZE (IPS)	CABLE RANGE	EST. SHIPPING	
					WEIGHT (lbs)	UNIT
24904	<b>CZ 104</b>	5/8 or 3/4	3/8	#4 - 2/0	.93	EA
24905	<b>CZ 105</b>			2/0 - 250	1.2	EA
24908	<b>CZ 108</b>	7/8 or 1	1/2 or 3/4	#4 - 2/0	1.3	EA
24909	<b>CZ 109</b>			2/0 - 250	2.1	EA
24910	<b>CZ 110</b>			300 - 500	1.8	EA
24914	<b>CZ 114</b>			#4 - 2/0	1.3	EA
24915	<b>CZ 115</b>	-	1	2/0 - 250	1.3	EA
24916	<b>CZ 116</b>			300 - 500	3.2	EA
24920	<b>CZ 120</b>			#4 - 2/0	1.5	EA
24921	<b>CZ 121</b>	-	1 1/4	2/0 - 250	1.6	EA
24922	<b>CZ 122</b>			300 - 500	3.7	EA
24926	<b>CZ 126</b>			#4 - 2/0	1.5	EA
24927	<b>CZ 127</b>	-	1 1/2	2/0 - 250	1.83	EA
24928	<b>CZ 128</b>			300 - 500	3.7	EA
24932	<b>CZ 132</b>			#4 - 2/0	1.9	EA
24933	<b>CZ 133</b>	-	2	2/0 - 250	2.6	EA
24934	<b>CZ 134</b>			300 - 500	4.3	EA
24937	<b>CZ 137</b>			#4 - 2/0	2.3	EA
24938	<b>CZ 138</b>	-	2 1/2	2/0 - 250	3.2	EA
24939	<b>CZ 139</b>			300 - 500	4.7	EA
24942	<b>CZ 142</b>			#4 - 2/0	2.7	EA
24943	<b>CZ 143</b>	-	3	2/0 - 250	3.5	EA
24944	<b>CZ 144</b>			300 - 500	5.4	EA
24947	<b>CZ 147</b>	-	3 1/2	#4 - 2/0	3.0	EA



Connects three cables parallel to rod or pipe

### RAISED-FLOOR PEDESTAL CLAMPS

Pedestal clamp for raised computer-floor grounding grid applications

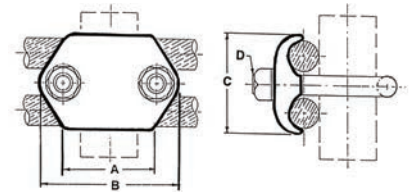
Use for signal reference grid, static ground drain, fault current ground

Accommodates one or two grounding wires

Install on round or square pedestal, as noted

Bronze high-copper alloy body and silicon bronze hardware

Suitable for direct burial in earth or concrete

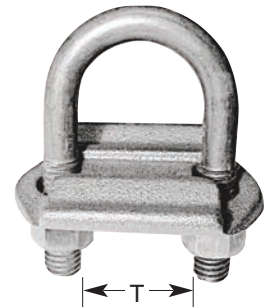


Connects one or two cables perpendicular to pedestal

### CR SERIES

T = Throat of U-bolt

NAED NUMBER	CATALOG NUMBER	PEDESTAL		CONDUCTORS		DIMENSIONS					CTN QTY	EST. SHIPPING	
		SIZE (IN)	TYPE	NO.	SIZE	A	B	C	D	T		WEIGHT (lbs)	UNIT
25807	<b>CR107</b>	3/4 - 1 3/4 - 7/8	ROUND SQUARE	1 or 2	#8-4 STR	1.50	2.38	1.3	3/8	1.15	20	7.8	CTN
25808	<b>CR108</b>	3/4 - 1 3/4 - 7/8	ROUND SQUARE	1 or 2	#4-2/0 STR	1.50	2.38	1.7	3/8	1.15	20	9.7	CTN
25814	<b>CR114</b>	1 1/4	ROUND	1 or 2	#4-2/0 STR	1.75	2.62	1.7	3/8	1.38	20	9.8	CTN





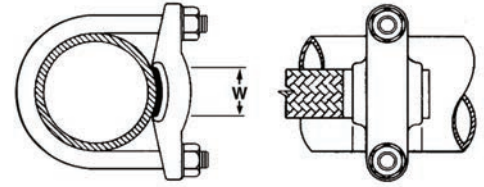
For copper strap

## GROUNDING FLEXIBLE STRAP SYSTEM



### PIPE CLAMPS FOR FLEXIBLE STRAPS

For grounding flat flexible strap to fence posts, gates or water pipe  
Bronze high-copper alloy castings



### CF SERIES

NAED NUMBER	CATALOG NUMBER	PIPE SIZE IPS	STRAP MAX W (IN)	EST. SHIPPING	
				WEIGHT (lbs)	UNIT
25710	CF 101	1	1	0.57	EA
25712	CF 121	1 1/4	1	0.65	EA
25715	CF 151	1 1/2	1	0.72	EA
25720	CF 201	2	1	0.78	EA
25725	CF 251	2 1/2	1	0.95	EA
25730	CF 301	3	1	1.02	EA
25735	CF 351	3 1/2	1	1.16	EA
25740	CF 401	4	1	1.22	EA
25750	CF 501	5	1	1.79	EA
25760	CF 601	6	1	2.30	EA



### FLEXIBLE JUMPER STRAP CONNECTORS

Use to absorb expansion, misalignment, or motion of equipment  
Use with CF Series clamps to bond fencepost to gate  
Flexible flat woven tin-plated copper braid  
Seamless high-conductivity tin-plated copper flat ferrules



### FJ SERIES

NAED NUMBER	CATALOG NUMBER	EQUIV. WIRE SIZE (APPROX)	NOMINAL AMP RATING*		NOMINAL DIMENSIONS			EST. SHIPPING	
			INDOOR	OUTDOOR	L	W	T	WEIGHT (lbs)	UNIT
26870	FJ 200-18N	#1 AWG	200	245	18	1	1/8	0.47	EA
26880	FJ 300-18N	3/0 AWG	340	405	18	1	3/16	0.86	EA
26890	FJ 400-18N	4/0 AWG	360	430	18	1	1/4	1.23	EA

\* Ampacity varies with service conditions such as environment, airflow, orientation, temperature rise, etc.  
NEMA bolt pattern for (2) 1/2" bolts on 1 3/4" centers.  
Other configurations and sizes available; consult factory.



### FENCE FABRIC GROUNDING CLAMPS

For grounding of fence fabric, barbed wire, and theft-deterrent wire  
Accommodates two wires at nearly any angle  
Electro-tin plated bronze body with stainless steel hardware



### GFGC SERIES

NAED NUMBER	CATALOG NUMBER	CONDUCTOR SIZE (AWG)	DIMENSIONS		TORQUE (IN-LBS)	CTN QTY	EST. SHIPPING	
			DIA	H			WEIGHT (lbs)	UNIT
25918	GFGC8	#8 AWG	1	5/8	67	10	2	CTN
25916	GFGC6	#6 AWG	1	11/16	67	10	2	CTN
25914	GFGC4	#4 AWG	1	7/8	67	10	2	CTN
25912	GFGC2	#2 AWG	1	13/16	67	10	2	CTN
25920	GFGC20	#2/0 AWG	1-3/8	15/16	67	5	1.5	CTN
25924	GFGC240	#2 & 4/0 AWG	1-5/8	1	67	5	1.5	CTN

Also available with Tork-Away™ security hardware to assure required torque and provide tamper-resistance. Add suffix "TA" to catalog number and contact factory for availability.  
Other sizes available, contact factory.

