



GROUNDING

GROUND ROD CLAMPS

Silicon bronze body
Bronze or stainless steel bolt

G SERIES

NAED NUMBER	CATALOG NUMBER	GROUND ROD SIZE (IN)	GROUND WIRE MAX	CTN QTY	EST. SHIPPING	
					WEIGHT (lbs)	UNIT
HEAVY DUTY						
27000	G 29	3/8	#4 STR	50	3.2	CTN
27010	G 30	1/2	#4 SOL	50	4.2	CTN
27020	G 31	5/8	1/0 SOL	50	6.1	CTN
27030	G 32	3/4	#2 SOL	50	8.0	CTN
* HEAVY DUTY						
27050	G 120	1/2	#2 STR	50	7.7	CTN
27090	G 580	5/8	1/0 STR	50	8.5	CTN
27070	G 340	3/4	1/0 STR	50	10.4	CTN
27040	G 100	1	4/0 STR	25	6.0	CTN
ECONOMY CLAMP						
27015	G 31E	5/8	#2 STR	50	4.9	CTN

PLATING: For tin plating add suffix letter "P" to catalog numbers.
* For allen set screws add suffix "A" to catalog number.

Tork-Away™ CLAMP

Torque-off bolt head to assure torque and tamper resistance **Brass Bolt**

NAED NUMBER	CATALOG NUMBER	GROUND ROD SIZE (IN)	GROUND WIRE MAX	CTN QTY	EST. SHIPPING	
					WEIGHT (lbs)	UNIT
26910	*G5810B	5/8	1/0 - #8 AWG	10	1.4	CTN

* G5810B not UL listed.

UNIVERSAL LARGE-WIRE

Extra heavy duty bronze body
Stainless steel bolts
More than 1½ inches of contact with 2-bolt clamp

NAED NUMBER	CATALOG NUMBER	GROUND ROD SIZE (IN)	GROUND WIRE RANGE	CTN QTY	EST. SHIPPING	
					WEIGHT (lbs)	UNIT
26923	*G3435	1/2	#6 SOL - 350 MCM	5	5	CTN
		5/8	#6 SOL - 350 MCM			
		3/4	#2 SOL - 250 MCM			
26924	*G3410	**3/8 - 3/4	#8 SOL - 1/0 AWG	10	2	CTN

* Fits all size ground rods indicated.

** Not UL for 3/8 rod.

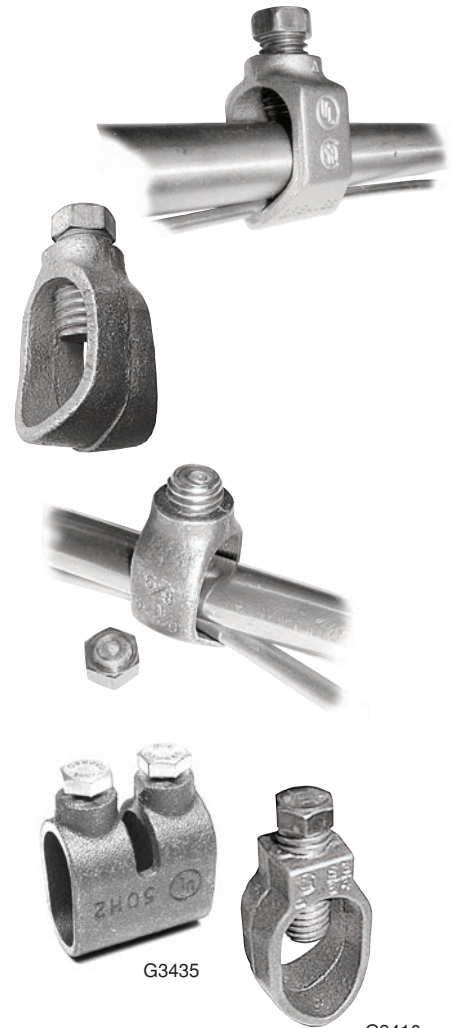
LARGE TWO-WIRE

Bronze body, stainless steel U-bolt
More than 1½ inches of contact area
Fits all ground rod sizes up through 1 inch diameter

NAED NUMBER	CATALOG NUMBER	GROUND ROD SIZE (IN)	WIRE RANGE	CTN QTY	EST. SHIPPING	
					WEIGHT (lbs)	UNIT
26930	G1500	1/2 - 1	#6 - 250MCM 2 WIRES PERPENDICULAR TO ROD #6 - 500MCM 1 WIRE PARALLEL TO ROD	5	2	CTN

Also available with Tork-Away™ Security Hardware to assure required torque and provide tamper resistance. Add "TA" to catalog number and contact factory for availability and price.

Direct Burial
Copper wire only



Continuous Loop

