



GROUNDING

GREAVES EXCLUSIVE

Ground-Lok™ CLAMP SYSTEM SERRATED HEAD – COMPONENTS

Copper wire only

BRONZE WATER PIPE GROUND CLAMPS

Interchangeable clamps and adapters provide versatility
 Matching serrations assure positive lock of adapter to clamp
 Heavy duty construction - cast bronze body and plated steel screws



G1 SERIES

NAED NUMBER	CATALOG NUMBER	WATER PIPE SIZE (IPS)	TUBING SIZE	GROUND WIRE RANGE	CTN QTY	EST. SHIPPING	
						WEIGHT (lbs)	UNIT
CLAMPS							
30102	G 1	1/2 - 1	3/4 - 1 1/2		50	12.0	CTN
30160	G 2	1 1/4 - 2	1 1/2 - 2	#2 STR	25	10.8	CTN
30440	G 12	2 1/2 - 4	3 - 4	10 SOL	4	4.46	CTN
30460	G 13	4 1/2 - 6	5 - 6		4	6.11	CTN
WIRE ADAPTERS							
30680	G 40	CABLE		4/0 - #10 STR	20	4.56	CTN
		ARMORED		#2 - 10 STR		4.56	CTN
30685	*G 50	CABLE		4/0 - #10 STR	20	4.56	CTN
		ARMORED		#2 - 10 STR		4.56	CTN
CONDUIT HUBS							
NAED NUMBER	CATALOG NUMBER	THREAD SIZE	GROUND WIRE RANGE	CTN QTY	EST. SHIPPING		
					WEIGHT (lbs)	UNIT	
30700	G 41	1/2	2/0 - #10 STR	20	5.00	CTN	
30720	G 42	3/4	3/0 - #10 STR	20	5.72	CTN	
30740	G 43	1	3/0 - #10 STR	20	6.81	CTN	

* G 50 not CSA.



Patented

PLATING: For tin-plating add suffix letter "P" to catalog numbers.
 UL listed to #4 AWG. CSA certified as shown.



4 CLAMPS + 5 ADAPTERS = 24 COMBINATIONS

All adapters fit all clamps



GROUNDING

GREAVES EXCLUSIVE

Ground-Lok™ CLAMP SYSTEM SERRATED HEAD – ASSEMBLED



Copper wire only

BRONZE WATER PIPE GROUND CLAMP ASSEMBLIES

NAED NUMBER	CATALOG NUMBER	INCLUDES ADAPTER TYPE	WATER PIPE SIZE (IPS)	GROUND WIRE RANGE	CTN QTY	EST. SHIPPING	
						WEIGHT (lbs)	UNIT
30200	G 3		1/2 - 1		25	11.74	CTN
30240	G 4	G40 WIRE ADAPTER	1 1/4 - 2	4/0 STR	20	6.56	CTN
30480	G 15		2 1/2 - 4		4	5.43	CTN
30500	G 16		4 1/2 - 6		4	6.90	CTN
30205	G 53		1/2 - 1		25	11.74	CTN
30245	G 54	*G50 WIRE ADAPTER	1 1/4 - 2	4/0 STR	20	6.56	CTN
30485	G 515		2 1/2 - 4		4	5.43	CTN
30505	G 516		4 1/2 - 6		4	6.90	CTN
FOR 1/2" RIGID CONDUIT							
30280	G 5		1/2 - 1		25	12.39	CTN
30320	G 6	1/2" CONDUIT SIZE	1 1/4 - 2	2/0 STR	20	13.46	CTN
30520	G 18		2 1/2 - 4		4	5.46	CTN
30540	G 19		4 1/2 - 6		4	7.10	CTN
FOR 3/4" RIGID CONDUIT							
30360	G 7		1/2 - 1		25	13.39	CTN
30380	G 8	3/4" CONDUIT SIZE	1 1/4 - 2	3/0 STR	20	14.26	CTN
30580	G 21		2 1/2 - 4		4	5.62	CTN
30600	G 22		4 1/2 - 6		4	7.10	CTN
FOR 1" RIGID CONDUIT							
30400	G 9		1/2 - 1		25	14.64	CTN
30420	G 10	1" CONDUIT SIZE	1 1/4 - 2	3/0 STR	10	7.76	CTN
30620	G 24		2 1/2 - 4		2	3.04	CTN
30640	G 25		4 1/2 - 6		2	3.86	CTN



Patented



PLATING: For tin-plating add suffix letter "P" to catalog numbers.
UL listed to #4 AWG. CSA certified as shown.
* G50 not CSA.

G1BS SERIES

*Brass Screws

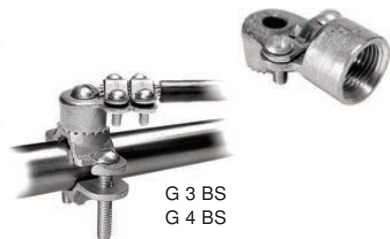
NAED NUMBER	CATALOG NUMBER	INCLUDES ADAPTER TYPE	WATER PIPE SIZE (IPS)	GROUND WIRE MAX	CTN QTY	EST. SHIPPING	
						WEIGHT (lbs)	UNIT
70560	G 1 BS	-	1/2 - 1		50	12.7	CTN
70565	G 2 BS	-	1 1/4 - 2	#2 STR	25	10.5	CTN
70570	G 12 BS	-	2 1/2 - 4		4	4.23	CTN
70575	G 13 BS	-	4 1/2 - 6		4	6.00	CTN
70580	G 40 BS	Wire	-	4/0 STR	20	4.67	CTN
70585	G 41 BS	1/2" Conduit	-	2/0 STR	20	5.17	CTN
70590	G 42 BS	3/4" Conduit	-	3/0 STR	20	5.83	CTN
70600	G 43 BS	1" Conduit	-	3/0 STR	20	6.74	CTN
70566	G 3 BS	Wire	1/2 - 1	4/0 STR	25	12.1	CTN
70567	G 4 BS	Wire	1 1/4 - 2	4/0 STR	10	3.50	CTN



G 40 BS



G 41 BS
G 42 BS
G 43 BS



For tin-plating add suffix letter "P" to catalog numbers. UL listed to #4 AWG. CSA certified as shown.
Screws are either brass or stainless steel.
*Brass screws not UL listed, not CSA.



GROUNDING ECONOMY PIPE CLAMPS



Bare Wire Type

Cast bronze high-copper alloy pipe clamp with plated steel screws
For bonding bare copper wire to water pipe, such as a water meter shunt

NAED NUMBER	CATALOG NUMBER	WATER PIPE SIZE (IPS)	WIRE MAX	FIG	CTN QTY	EST. SHIPPING	
						WEIGHT (lbs)	UNIT
30140	G 1S	1/2 - 1	#2 STR	1	50	9.90	CTN
30180	G 2S	1/4 - 2	#2 STR	1	25	9.97	CTN

Armored Wire Type

Cast bronze high-copper alloy pipe clamp with plated steel screws
For bonding bare or armored copper wire, also use with jacketed cables or cords
Separate two-screw clamping strap for armor

NAED NUMBER	CATALOG NUMBER	WATER PIPE SIZE (IPS)	WIRE MAX	FIG	CTN QTY	EST. SHIPPING	
						WEIGHT (lbs)	UNIT
30560	G 20	1/2 - 1	#2 STR	2	50	11.33	CTN
30260	G 4S	1/4 - 2	#4 STR	2	10	4.83	CTN

1/2" Conduit Type

Cast bronze high-copper alloy pipe clamp with plated steel screws
Hub threaded for 1/2" conduit
Connect wire under hub-screw

NAED NUMBER	CATALOG NUMBER	WATER PIPE SIZE (IPS)	WIRE MAX	FIG	CTN QTY	EST. SHIPPING	
						WEIGHT (lbs)	UNIT
30300	G 5S	1/2 - 1	#6 SOL	3	25	5.86	CTN
30340	G 6S	1/4 - 2	#6 SOL	3	20	10.2	CTN

Brass Screw Type

Cast bronze high-copper alloy pipe clamp with brass or stainless steel screws
For bonding bare copper wire to water pipe, such as a water meter shunt

NAED NUMBER	CATALOG NUMBER	WATER PIPE SIZE (IPS)	WIRE MAX	FIG	CTN QTY	EST. SHIPPING	
						WEIGHT (lbs)	UNIT
70610	*G 1S-BS	1/2 - 1	#2 STR	4	50	10.2	CTN
70614	*G 2S-BS	1/4 - 2	#2 STR	4	25	9.03	CTN

* Not UL listed.

Direct Burial Type

Cast bronze high-copper alloy pipe clamp with silicon bronze or stainless steel screws
For bonding bare copper wire to water pipe, such as a water meter shunt
UL listed for direct burial in earth or concrete, G 20-DB has armor clamp as in Fig. 2

NAED NUMBER	CATALOG NUMBER	WATER PIPE SIZE (IPS)	WIRE MAX.	FIG	CTN QTY	EST. SHIPPING	
						WEIGHT (lbs)	UNIT
70620	G 1S-DB	1/2 - 1	#2 STR	5	50	10.3	CTN
70622	G 2S-DB	1/4 - 2	#2 STR	5	25	9.15	CTN
70630	G 20-DB	1/2 - 1	#2 STR	2	50	11.8	CTN

PLATING: For tin plating add suffix letter "P" to catalog numbers.

ALUMINUM GROUNDING CLAMPS

High-strength tin-plated aluminum alloy, plated steel screws
For bonding wire to water pipe, galvanized pipe, or steel conduit

NAED NUMBER	CATALOG NUMBER	WATER PIPE SIZE (IPS)	WIRE MAX.	FIG	CTN QTY	EST. SHIPPING	
						WEIGHT (lbs)	UNIT
30810	GAC1	1/2 - 1	1/0 - #14	6	25	3.67	CTN
30820	GAC2	1/4 - 2	250 - #6	6	10	3.23	CTN
30840	GAC4	2 1/2 - 4	250 - #6	6	4	3.72	CTN

Copper wire only



Figure 1



Figure 2



Figure 3

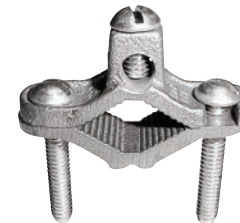


Figure 4

Direct Burial



Figure 5

Dual-rated
for aluminum or copper wire

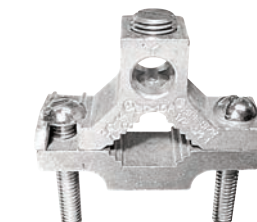


Figure 6



GREAVES EXCLUSIVE

GROUNDING

Ground-Lok™ CLAMP SYSTEM

SERRATED-HEAD CLAMP ASSEMBLIES

For Direct Burial Grounding and Bonding

Applications include galvanized pipe, rod, tube, fencing, rebar (#6, 3/4 inch and up)
 Suitable for use in harsh environments such as agricultural buildings, swimming pools, food processing, marine, grounding grid
 Serrated adapter head allows full 360° orientation – lock in position with serrated teeth to assure positive lock
 Corrosion-resistant high-strength cast bronze alloy body, copper straps, silicon bronze or stainless steel hardware
 Approved for direct burial in earth or concrete
 Replaces exothermic welding

Direct Burial

Copper wire only
 Continuous Loop

Wire up to #4/0 AWG
 Pipe sizes 1/2" to 6"



LOW-WING™ SYSTEM

Low profile lay-in design for either continuous run or termination applications

G-50DB SERIES

NAED NUMBER	CATALOG NUMBER	WATER PIPE SIZE (IN)	REBAR SIZE		GROUND WIRE	CTN QTY	EST. SHIPPING	
			#	INCH			WEIGHT (lbs)	UNIT
30755	G 150-DB	1/2 - 1	6 - 9	3/4 - 1 1/8	4/0STR-#10SOL	25	12.2	CTN
30765	G 250-DB	1 1/4 - 2	11	1 3/8 - 2 1/4		10	6.8	CTN
30775	G 450-DB	2 1/2 - 4	—	—		2	5.2	CTN
30785	G 650-DB	4 1/2 - 6	—	—		2	3.5	CTN

Not for use on epoxy coated rebar



HIGH-WING™ SYSTEM

Design allows either continuous run or termination applications

G-40DB SERIES

NAED NUMBER	CATALOG NUMBER	WATER PIPE SIZE (IN)	REBAR SIZE		GROUND WIRE	CTN QTY	EST. SHIPPING	
			#	INCH			WEIGHT (lbs)	UNIT
30750	G 140-DB	1/2 - 1	6 - 9	3/4 - 1 1/8	4/0STR-#10SOL	25	12.2	CTN
30760	G 240-DB	1 1/4 - 2	11	1 3/8 - 2 1/4		10	6.73	CTN
30770	G 440-DB	2 1/2 - 4	—	—		2	5.18	CTN
30780	G 640-DB	4 1/2 - 6	—	—		2	3.45	CTN

Not for use on epoxy coated rebar





GREAVES

GROUNDING

U-BOLT GROUND CLAMP CONNECTORS

Heavy Duty – Bronze Castings for Strength and Ruggedness

Use to connect wire to pipe, rod, or fence posts

High copper alloy bronze castings with silicon bronze hardware

Suitable for direct burial in earth or concrete

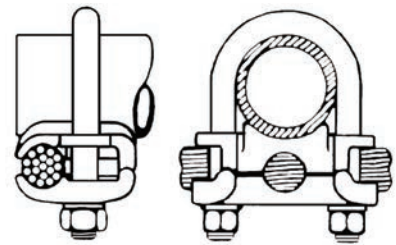
Direct Burial

Continuous Loop
Copper wire only



C100 SERIES

NAED NUMBER	CATALOG NUMBER	ROD SIZE (IN)	PIPE SIZE IPS (O.D.)	CABLE RANGE	EST. SHIPPING	
					WEIGHT (lbs)	UNIT
25000	C 100			#4 - 8	0.39	EA
25020	• C 101	1/2	1/4" (.54)	2/0 - #4	0.48	EA
25040	C 102			250 - 2/0	0.68	EA
25060	C 103			#4 - 8	0.45	EA
25080	• C 104	5/8 - 3/4	3/8" (.675)	2/0 - #4	0.54	EA
25100	• C 105			250 - 2/0	0.66	EA
25120	C 106			500 - 300	1.48	EA
25140	C 107			#4 - 8	0.51	EA
25160	• C 108	7/8 - 1	1/2" - 3/4" (.84) - (1.05)	2/0 - #4	0.49	EA
25180	C 109			250 - 2/0	0.60	EA
25200	• C 110			500 - 300	0.93	EA
25240	C 113			#4 - 8	0.44	EA
25260	• C 114	-	1" (1.315)	2/0 - #4	0.66	EA
25280	• C 115			250 - 2/0	0.66	EA
25300	C 116			500 - 300	1.72	EA
25340	• C 119			#4 - 8	0.77	EA
25360	• C 120		1 1/4" (1.66)	2/0 - #4	0.80	EA
25380	• C 121			250 - 2/0	0.82	EA
25400	C 122			500 - 300	2.01	EA
25440	C 125			#4 - 8	0.75	EA
25460	C 126		1 1/2" (1.90)	2/0 - #4	0.80	EA
25480	• C 127			250 - 2/0	0.98	EA
25500	• C 128			500 - 300	1.56	EA
25540	• C 131			#4 - 8	0.80	EA
25560	• C 132		2" (2.375)	2/0 - #4	0.99	EA
71200	• C 133			250 - 2/0	1.06	EA
71205	C 134			500 - 300	1.90	EA
71215	C 136			#4 - 8	1.07	EA
71220	C 137		2 1/2" (2.875)	2/0 - #4	1.21	EA
71225	C 138			250 - 2/0	1.69	EA
71230	C 139			500 - 300	2.50	EA
71240	C 141			#4 - 8	1.26	EA
71245	• C 142		3" (3.5)	2/0 - #4	1.45	EA
71250	C 143			250 - 2/0	1.85	EA
71255	C 144			500 - 300	2.89	EA
71265	C 146			#4 - 8	1.40	EA
71270	C 147		3 1/2" (4.0)	2/0 - #4	1.60	EA
71275	C 148			250 - 2/0	2.01	EA
71280	C 149			500 - 300	3.00	EA
71290	C 151			#4 - 8	1.97	EA
71300	• C 152		4" (4.5)	2/0 - #4	1.97	EA
71305	C 153			250 - 2/0	2.23	EA
71310	C 154			500 - 300	3.30	EA



Connects one wire
parallel or perpendicular
to rod or pipe

Heavy Duty

Pipe sizes 1/4" to 4" IPS
Wire #8 to 500 MCM

Applications

Water Pipe
Metallic Fencing
Ground Rods
Grounding Grids
Rebar

For sizes not listed contact factory for delivery.

PLATING: For tin plating add suffix "P" to catalog numbers.

Sizes with "*" before catalog number are CSA only.

www.greaves-usa.com

Phone 860-664-4505 • Fax 860-664-4546

TOLL FREE 1-800-243-1130 (Outside CT)



GROUNDING

LARGE PIPE CLAMPS

Extra heavy-duty bronze castings for strength and ruggedness

Use to connect wire to pipe or fence posts

Clamp first to pipe, then attach wire with cover piece

Separate bolts for mounting on pipe and connecting wire

High copper alloy bronze castings with silicon bronze or stainless steel hardware

Suitable for direct burial in earth or concrete

Direct Burial

Continuous Loop

Copper wire only

CG SERIES

NAED NUMBER	CATALOG NUMBER	PIPE SIZE IPS (O.D.)	CABLE RANGE	FIG.	EST. SHIPPING	
					WEIGHT (lbs)	UNIT
25624	CG 2050	2" (2.375)	500 - 300	1	1.6	EA
25623	CG 2052		500 - #2	2	2.0	EA
25620	CG 2010		1000 - #2	2	5.8	EA
25625	CG 2604	2-1/2" (2.875)	#4 - 8	1	.7	EA
25626	CG 2622		2/0 - #4	1	.9	EA
25627	CG 2625		250 - 2/0	1	1.1	EA
25628	CG 2650		500 - 300	1	1.8	EA
25629	CG 2610		1000 - #2	2	6.0	EA
25633	CG 3125		250 - 2/0	1	1.3	EA
25634	CG 3150	3" (3.5)	500 - 300	1	2.4	EA
25635	CG 3175		750 - 550	1	3.5	EA
25630	CG 3110		1000 - #2	2	6.6	EA
25673	CG 3625	3-1/2" (4.0)	250 - 2/0	1	1.3	EA
25674	CG 3650		500 - 300	1	2.4	EA
25675	CG 3675		750 - 550	1	3.6	EA
25676	CG 3610		1000 - #2	2	7.3	EA
25677	CG 4125		250 - 2/0	1	1.5	EA
25678	CG 4150	4" (4.5)	500 - 300	1	2.6	EA
25679	CG 4175		750 - 550	1	3.8	EA
25680	CG 4110		1000 - #2	2	8.5	EA
25647	CG 4625		4-1/2" (5.0)	250 - #6	2	7.9
25648	CG 4650	500 - #2		2	8.6	EA
25649	CG 4610	1000 - #2		2	8.9	EA
25651	CG 5122	5" (5.563)	2/0 - #4	1	1.5	EA
25652	CG 5125		250 - 2/0	1	2.0	EA
25653	CG 5150		500 - 300	1	3.1	EA
25654	CG 5175		750 - 550	1	4.3	EA
25650	CG 5110		1000 - #2	2	9.5	EA
25661	CG 6122	6" (6.625)	2/0 - #4	1	1.8	EA
25662	CG 6125		250 - 2/0	1	2.0	EA
25663	CG 6150		500 - 300	1	3.4	EA
25664	CG 6175		750 - 550	1	4.7	EA
25660	CG 6110		1000 - #2	2	10.8	EA
25670	CG 7110		6" Cast Iron (7.1 - 7.3)	1000 - #2	2	7.8
25681	CG 8125	8" (8.625)	250 - 2/0	1	2.4	EA
25682	CG 8150		500 - 300	1	4.5	EA
25683	CG 8175		750 - 550	1	5.3	EA
25689	CG 8110		1000 - #2	2	7.8	EA
25690	CG 1010		10" (10.75)	1000 - #2	2	6.5
25692	CG 1210	12" (12.75)	1000 - #2	2	8.4	EA
25694	CG 1410	14" (14.0)	1000 - #2	2	11.0	EA
25696	CG 1610	16" (16.0)	1000 - #2	2	15.0	EA

Sizes for other O.D. or circumference available. For sizes not listed contact factory for delivery.

For tin plating add suffix letter "P" to catalog numbers.

Figure 2 also available with Tork-Away™ Security Hardware to assure required torque and provide tamper resistance. Add "TA" to catalog number and contact factory for availability and price.

Large pipe sizes
2" to 16" IPS

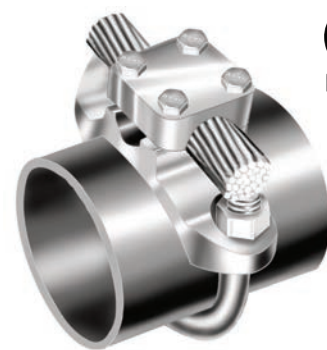


Figure 1

Connects one wire parallel or perpendicular to pipe

Large wire sizes
to 1000MCM



Figure 2
Not UL listed

Connects one wire parallel to pipe



GREAVES



GROUNDING

U-BOLT GROUND CLAMPS

Heavy Duty – Bronze castings for strength and ruggedness

High copper alloy bronze castings with stainless steel U-bolts and hardware

Superior range-taking capability allows six pipe clamp sizes to supplant dozens of similar clamps

Suitable replacement for many Greaves C, CW, and CS series U-bolt clamps, see cross reference

Accepts one or two cables, either parallel or perpendicular to pipe or rod

UL listed for both grounding and lightning protection

Suitable for direct burial in earth or concrete





Direct Burial

Continuous Loop
Copper wire only



CH SERIES

Two-Wire Parallel or Perpendicular

NAED NUMBER	CATALOG NUMBER	CONDUCTOR RANGE WITH 1 OR 2* CABLES	CONDUCTOR RANGE W/ 2 UNEQUAL CABLES	PIPE SIZE IPS (OD)	EST. SHIPPING		
					WEIGHT (lbs)	UNIT	
24509	CH 109	250 MCM - #6 SOL	250 MCM - #2 SOL OR 1/0 AWG - #6 SOL	1/4 - 3/4 (.375 - 1)	0.5	EA	 1 wire parallel to pipe
24521	CH 121	250 MCM - #6 SOL	250 MCM - #2 SOL OR 1/0 AWG - #6 SOL	1/2 - 1-1/2 (.75 - 1.7)	0.6	EA	
24533	CH 133	250 MCM - #6 SOL	250 MCM - #2 SOL OR 1/0 AWG - #6 SOL	3/4 - 2 (1 - 2.4)	0.7	EA	
24543	CH 143	250 MCM - #6 SOL	250 MCM - #2 SOL OR 1/0 AWG - #6 SOL	2 - 3 (2.25 - 3.5)	1.0	EA	
24553	CH 153	250 MCM - #6 SOL	250 MCM - #2 SOL OR 1/0 AWG - #6 SOL	3 - 4 (3.2 - 4.5)	1.25	EA	
24663	CH 163	250 MCM - #6 SOL	250 MCM - #2 SOL OR 1/0 AWG - #6 SOL	5 - 6 (5.63 - 6.63)	1.75	EA	

*Same size.

Also available with Tork-Away™ Security Hardware to assure required torque and provide tamper-resistant conical. Add "TA" to Cat No. and contact factory for price and availability.



GROUNDING

U-BOLT GROUND CLAMP CONNECTORS

Heavy Duty – Bronze castings for strength and ruggedness

Use to connect wire to pipe or fence posts

High copper alloy bronze castings with silicon bronze hardware

Suitable for direct burial in earth or concrete

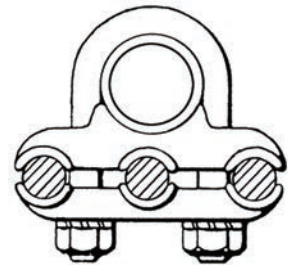
Direct Burial

Continuous Loop
Copper wire only

CZ SERIES

Three-Wire Parallel

NAED NUMBER	CATALOG NUMBER	ROD SIZE (IN)	WATER PIPE SIZE (IPS)	CABLE RANGE	EST. SHIPPING	
					WEIGHT (lbs)	UNIT
24904	CZ 104	5/8 or 3/4	3/8	#4 - 2/0	.93	EA
24905	CZ 105			2/0 - 250	1.2	EA
24908	CZ 108	7/8 or 1	1/2 or 3/4	#4 - 2/0	1.3	EA
24909	CZ 109			2/0 - 250	2.1	EA
24910	CZ 110			300 - 500	1.8	EA
24914	CZ 114			#4 - 2/0	1.3	EA
24915	CZ 115	-	1	2/0 - 250	1.3	EA
24916	CZ 116			300 - 500	3.2	EA
24920	CZ 120			#4 - 2/0	1.5	EA
24921	CZ 121	-	1 1/4	2/0 - 250	1.6	EA
24922	CZ 122			300 - 500	3.7	EA
24926	CZ 126			#4 - 2/0	1.5	EA
24927	CZ 127	-	1 1/2	2/0 - 250	1.83	EA
24928	CZ 128			300 - 500	3.7	EA
24932	CZ 132			#4 - 2/0	1.9	EA
24933	CZ 133	-	2	2/0 - 250	2.6	EA
24934	CZ 134			300 - 500	4.3	EA
24937	CZ 137			#4 - 2/0	2.3	EA
24938	CZ 138	-	2 1/2	2/0 - 250	3.2	EA
24939	CZ 139			300 - 500	4.7	EA
24942	CZ 142			#4 - 2/0	2.7	EA
24943	CZ 143	-	3	2/0 - 250	3.5	EA
24944	CZ 144			300 - 500	5.4	EA
24947	CZ 147	-	3 1/2	#4 - 2/0	3.0	EA



Connects three cables parallel to rod or pipe

RAISED-FLOOR PEDESTAL CLAMPS

Pedestal clamp for raised computer-floor grounding grid applications

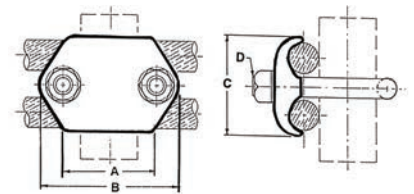
Use for signal reference grid, static ground drain, fault current ground

Accommodates one or two grounding wires

Install on round or square pedestal, as noted

Bronze high-copper alloy body and silicon bronze hardware

Suitable for direct burial in earth or concrete



Connects one or two cables perpendicular to pedestal

CR SERIES

T = Throat of U-bolt

NAED NUMBER	CATALOG NUMBER	PEDESTAL		CONDUCTORS		DIMENSIONS					CTN QTY	EST. SHIPPING	
		SIZE (IN)	TYPE	NO.	SIZE	A	B	C	D	T		WEIGHT (lbs)	UNIT
25807	CR107	3/4 - 1 3/4 - 7/8	ROUND SQUARE	1 or 2	#8-4 STR	1.50	2.38	1.3	3/8	1.15	20	7.8	CTN
25808	CR108	3/4 - 1 3/4 - 7/8	ROUND SQUARE	1 or 2	#4-2/0 STR	1.50	2.38	1.7	3/8	1.15	20	9.7	CTN
25814	CR114	1 1/4	ROUND	1 or 2	#4-2/0 STR	1.75	2.62	1.7	3/8	1.38	20	9.8	CTN

