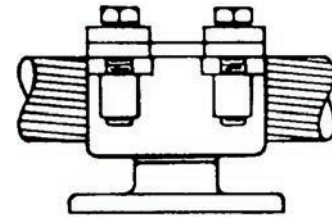
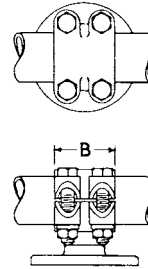
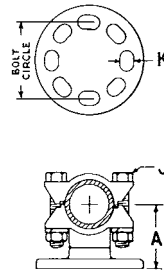


## WPC & WTT SERIES

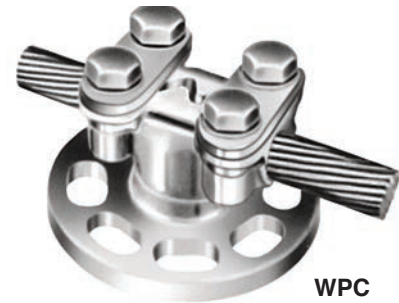
Bus support for cable or tube



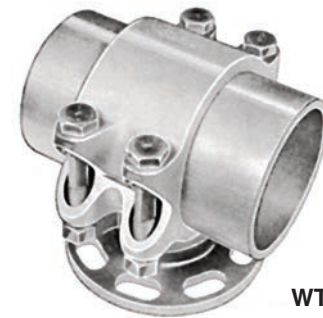
WTT

WPC

Cable Range				BRONZE CONNECTOR			DUAL-RATED ALUMINUM CONNECTORS						
				Catalog Number	Dimension in Inches (Approx.)			Catalog Number	Dimension in Inches (Approximate)				
Max.	Min.	IPS	Bolt Circle		A	B	K		A	B	K		
2/0	#4	1/4	3	WP2C3	1 3/8	2 13/16	9/16	ALWP2C3	1 3/8	2 13/16	9/16		
2/0	#4	1/4	5	WP2C5	1 3/8	2 13/16	11/16	ALWP2C5	1 3/8	2 13/16	11/16		
350	2/0	3/8	3	WP4C3	1 1/2	2 13/16	9/16	ALWP4C3	1 1/2	2 13/16	9/16		
350	2/0	3/8	5	WP4C5	1 1/2	2 13/16	11/16	ALWP4C5	1 1/2	2 13/16	11/16		
600	350	1/2	3	WP5C3	1 3/4	2 13/16	9/16	ALWP5C3	1 3/4	2 13/16	9/16		
600	350	1/2	5	WP5C5	2 1/8	2 13/16	11/16	ALWP5C5	2 1/8	2 13/16	11/16		
1000	600	3/4	3	WP6C3	2	3	9/16	ALWP6C3	2	3	9/16		
1000	600	3/4	5	WP6C5	2 1/4	3	11/16	ALWP6C5	2 1/4	3	11/16		
1500	1000	1	3	WP7C3	2	3 3/16	9/16	ALWP7C3	2	3 3/16	9/16		
1500	1000	1	5	WP7C5	2 1/4	3 3/16	11/16	ALWP7C5	2 1/4	3 3/16	11/16		
2000	1500	1 1/4	3	WP8C3	2 1/4	3 3/8	9/16	ALWP8C3	2 1/4	3 3/8	9/16		
2000	1500	1 1/4	5	WP8C5	2 1/2	3 3/8	11/16	ALWP8C5	2 1/2	3 3/8	11/16		
3000	2000	1 1/2	3	WP9C3	2 1/2	3 3/8	9/16	ALWP9C3	2 1/2	3 3/8	9/16		
3000	2000	1 1/2	5	WP9C5	2 3/4	3 3/8	11/16	ALWP9C5	2 3/4	3 3/8	11/16		
IPS ONLY				2	3	WT5T3	2 1/8	3	9/16	ALWT5T3	2 1/8	3	9/16
				2	5	WT5T5	2 1/8	3	11/16	ALWT5T5	2 1/8	3	11/16
				2 1/2	3	WT6T3	3	3	9/16	ALWT6T3	3	3	9/16
				2 1/2	5	WT6T5	3 1/8	3	11/16	ALWT6T5	3 1/8	3	11/16
				3	3	WT7T3	3 1/2	3 1/4	9/16	ALWT7T3	3 1/2	3 1/4	9/16
				3	5	WT7T5	3 11/16	3 1/4	11/16	ALWT7T5	3 11/16	3 1/4	11/16
				3 1/2	3	WT8T3	3 3/4	3 1/4	9/16	ALWT8T3	3 3/4	3 1/4	9/16
				3 1/2	5	WT8T5	4	3 1/4	11/16	ALWT8T5	4	3 1/4	11/16
				4	3	WT9T3	4	3 1/4	9/16	ALWT9T3	4	3 1/4	9/16
				4	5	WT9T5	4 1/4	3 1/4	11/16	ALWT9T5	4 1/4	3 1/4	11/16



WPC



WTT

Includes galvanized mounting hardware.

## FNSP SERIES

Stud spade adapter

Stud Size		H.T.**		BRONZE CONNECTORS							DUAL-RATED ALUMINUM CONNECTORS						
				Catalog Number	Dimension in Inches (Approximate)							Catalog Number	Dimension in Inches (Approximate)				
A	B2	B4	C		D	G	A	B2	B4	C	D		G				
1/2-13	2	F2NSP0	5 3/4	2	-	2	3 1/4	5/16	ALF2NSP0	5 3/4	2	-	2	3 1/4	5/16		
1/2-13	4	F4NSP0	5 3/4	-	3	2	3 1/4	5/16	ALF4NSP0	5 3/4	-	3	2	3 1/4	5/16		
3/4-16	2	F2NSP1	5 3/4	2	-	2	3 1/4	3/8	ALF2NSP1	5 3/4	2	-	2	3 1/4	3/8		
3/4-16	4	F4NSP1	5 3/4	-	3	2	3 1/4	3/8	ALF4NSP1	5 3/4	-	3	2	3 1/4	3/8		
1-14	2	F2NSP2	6	2	-	2 3/16	3 1/4	7/16	ALF2NSP2	6	2	-	2 3/16	3 1/4	7/16		
1-14	4	F4NSP2	6	-	3	2 3/16	3 1/4	7/16	ALF4NSP2	6	-	3	2 3/16	3 1/4	7/16		
1 1/8-12	2	F2NSP3	6	2	-	2 3/16	3 1/4	1/2	ALF2NSP3	6	2	-	2 3/16	3 1/4	1/2		
1 1/8-12	4	F4NSP3	6	-	3	2 3/16	3 1/4	1/2	ALF4NSP3	6	-	3	2 3/16	3 1/4	1/2		
1 1/4-12	2	F2NSP4	6 1/2	2	-	2 3/8	3 1/4	9/16	ALF2NSP4	6 1/2	2	-	2 3/8	3 1/4	9/16		
1 1/4-12	4	F4NSP4	6 1/2	-	3	2 3/8	3 1/4	9/16	ALF4NSP4	6 1/2	-	3	2 3/8	3 1/4	9/16		
1 1/2-12	2	F2NSP5	6 1/2	2	-	2 3/8	3 1/4	5/8	ALF2NSP5	6 1/2	2	-	2 3/8	3 1/4	5/8		
1 1/2-12	4	F4NSP5	6 1/2	-	3	2 3/8	3 1/4	5/8	ALF4NSP5	6 1/2	-	3	2 3/8	3 1/4	5/8		

Hardware is 1/2". Bolt hole spacing 1 3/4" on center.

For 90° add suffix 90 to CATALOG NUMBER.

\*\* Holes in Tang

