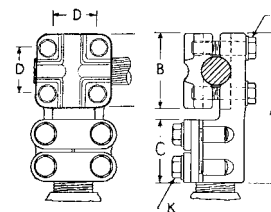


XSP SERIES

Stud connectors for cable

K = 1/2"



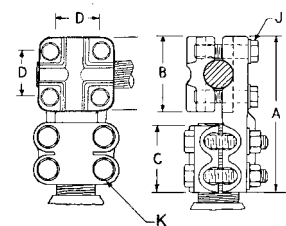
			BRONZE CONNECTORS					DUAL-RATED ALUMINUM CONNECTORS						
Cable Range		Stud Size	Catalog Number	Dimension in Inches (Approximate)					Catalog Number	Dimension in Inches (Approximate)				
Max.	Min.			A	B	C	D	J		A	B	C	D	J
250	6 SOL.	1-14	X25SP2	4 ⁹ / ₁₆	1 ⁷ / ₈	2 ³ / ₁₆	1 ¹ / ₁₆	3 ³ / ₈	ALX25SP2	4 ⁹ / ₁₆	1 ⁷ / ₈	2 ³ / ₁₆	1 ¹ / ₁₆	3 ³ / ₈
500	6 SOL.	1-14	X45SP2	4 ¹³ / ₁₆	2 ¹ / ₈	2 ³ / ₁₆	1 ³ / ₈	3 ³ / ₈	ALX45SP2	4 ¹³ / ₁₆	2 ¹ / ₈	2 ³ / ₁₆	1 ³ / ₈	3 ³ / ₈
1000	2 SOL.	1-14	X6SP2	5 ⁹ / ₁₆	2 ⁷ / ₈	2 ³ / ₁₆	1 ⁷ / ₈	1 ¹ / ₂	ALX6SP2	5 ⁹ / ₁₆	2 ⁷ / ₈	2 ³ / ₁₆	1 ⁷ / ₈	1 ¹ / ₂
250	6 SOL.	1 ¹ / ₂ -12	X25SP3	4 ⁹ / ₁₆	1 ⁷ / ₈	2 ³ / ₁₆	1 ¹ / ₁₆	3 ³ / ₈	ALX25SP3	4 ⁹ / ₁₆	1 ⁷ / ₈	2 ³ / ₁₆	1 ¹ / ₁₆	3 ³ / ₈
500	6 SOL.	1 ¹ / ₂ -12	X45SP3	4 ¹³ / ₁₆	2 ¹ / ₈	2 ³ / ₁₆	1 ³ / ₈	3 ³ / ₈	ALX45SP3	4 ¹³ / ₁₆	2 ¹ / ₈	2 ³ / ₁₆	1 ³ / ₈	3 ³ / ₈
1000	2 SOL.	1 ¹ / ₂ -12	X6SP3	5 ⁹ / ₁₆	2 ⁷ / ₈	2 ³ / ₁₆	1 ⁷ / ₈	1 ¹ / ₂	ALX6SP3	5 ⁹ / ₁₆	2 ⁷ / ₈	2 ³ / ₁₆	1 ⁷ / ₈	1 ¹ / ₂
250	6 SOL.	1 ¹ / ₄ -12	X25SP4	4 ³ / ₄	1 ⁷ / ₈	2 ³ / ₈	1 ¹ / ₁₆	3 ³ / ₈	ALX25SP4	4 ³ / ₄	1 ⁷ / ₈	2 ³ / ₈	1 ¹ / ₁₆	3 ³ / ₈
500	6 SOL.	1 ¹ / ₄ -12	X45SP4	5	2 ¹ / ₈	2 ³ / ₈	1 ³ / ₈	3 ³ / ₈	ALX45SP4	5	2 ¹ / ₈	2 ³ / ₈	1 ³ / ₈	3 ³ / ₈
1000	2 SOL.	1 ¹ / ₄ -12	X6SP4	5 ³ / ₄	2 ⁷ / ₈	2 ³ / ₈	1 ⁷ / ₈	1 ¹ / ₂	ALX6SP4	5 ³ / ₄	2 ⁷ / ₈	2 ³ / ₈	1 ⁷ / ₈	1 ¹ / ₂
250	6 SOL.	1 ¹ / ₂ -12	X25SP5	4 ³ / ₄	1 ⁷ / ₈	2 ³ / ₈	1 ¹ / ₁₆	3 ³ / ₈	ALX25SP5	4 ³ / ₄	1 ⁷ / ₈	2 ³ / ₈	1 ¹ / ₁₆	3 ³ / ₈
500	6 SOL.	1 ¹ / ₂ -12	X45SP5	5	2 ¹ / ₈	2 ³ / ₈	1 ³ / ₈	3 ³ / ₈	ALX45SP5	5	2 ¹ / ₈	2 ³ / ₈	1 ³ / ₈	3 ³ / ₈
1000	2 SOL.	1 ¹ / ₂ -12	X6SP5	5 ³ / ₄	2 ⁷ / ₈	2 ³ / ₈	1 ⁷ / ₈	1 ¹ / ₂	ALX6SP5	5 ³ / ₄	2 ⁷ / ₈	2 ³ / ₈	1 ⁷ / ₈	1 ¹ / ₂
2000	4/0	1 ¹ / ₂ -12	X8SP5	6 ¹ / ₄	3 ³ / ₈	2 ³ / ₈	2 ³ / ₈	1 ¹ / ₂	ALX8SP5	6 ¹ / ₄	3 ³ / ₈	2 ³ / ₈	2 ³ / ₈	1 ¹ / ₂



XST SERIES

Stud connectors for cable

K = 1/2"



			BRONZE CONNECTORS					DUAL-RATED ALUMINUM CONNECTORS						
Cable Range		Stud Size	Catalog Number	Dimension in Inches (Approximate)					Catalog Number	Dimension in Inches (Approximate)				
Max.	Min.			A	B	C	D	J		A	B	C	D	J
250	6 SOL.	1-14	X25ST2	4 ⁵ / ₈	1 ⁷ / ₈	2 ¹ / ₄	1 ¹ / ₁₆	3 ³ / ₈	ALX25ST2	4 ⁵ / ₈	1 ⁷ / ₈	2 ¹ / ₄	1 ¹ / ₁₆	3 ³ / ₈
500	6 SOL.	1-14	X45ST2	4 ⁷ / ₈	2 ¹ / ₈	2 ¹ / ₄	1 ³ / ₈	3 ³ / ₈	ALX45ST2	4 ⁷ / ₈	2 ¹ / ₈	2 ¹ / ₄	1 ³ / ₈	3 ³ / ₈
1000	2 SOL.	1-14	X6ST2	5 ⁵ / ₈	2 ⁷ / ₈	2 ¹ / ₄	1 ⁷ / ₈	1 ¹ / ₂	ALX6ST2	5 ⁵ / ₈	2 ⁷ / ₈	2 ¹ / ₄	1 ⁷ / ₈	1 ¹ / ₂
250	6 SOL.	1 ¹ / ₂ -12	X25ST3	4 ⁵ / ₈	1 ⁷ / ₈	2 ¹ / ₄	1 ¹ / ₁₆	3 ³ / ₈	ALX25ST3	4 ⁵ / ₈	1 ⁷ / ₈	2 ¹ / ₄	1 ¹ / ₁₆	3 ³ / ₈
500	6 SOL.	1 ¹ / ₂ -12	X45ST3	4 ⁷ / ₈	2 ¹ / ₈	2 ¹ / ₄	1 ³ / ₈	3 ³ / ₈	ALX45ST3	4 ⁷ / ₈	2 ¹ / ₈	2 ¹ / ₄	1 ³ / ₈	3 ³ / ₈
1000	2 SOL.	1 ¹ / ₂ -12	X6ST3	5 ⁵ / ₈	2 ⁷ / ₈	2 ¹ / ₄	1 ⁷ / ₈	1 ¹ / ₂	ALX6ST3	5 ⁵ / ₈	2 ⁷ / ₈	2 ¹ / ₄	1 ⁷ / ₈	1 ¹ / ₂
250	6 SOL.	1 ¹ / ₄ -12	X25ST4	4 ⁷ / ₈	1 ⁷ / ₈	2 ¹ / ₂	1 ¹ / ₁₆	3 ³ / ₈	ALX25ST4	4 ⁷ / ₈	1 ⁷ / ₈	2 ¹ / ₂	1 ¹ / ₁₆	3 ³ / ₈
500	6 SOL.	1 ¹ / ₄ -12	X45ST4	5 ¹ / ₈	2 ¹ / ₈	2 ¹ / ₂	1 ³ / ₈	3 ³ / ₈	ALX45ST4	5 ¹ / ₈	2 ¹ / ₈	2 ¹ / ₂	1 ³ / ₈	3 ³ / ₈
1000	2 SOL.	1 ¹ / ₄ -12	X6ST4	5 ⁷ / ₈	2 ⁷ / ₈	2 ¹ / ₂	1 ⁷ / ₈	1 ¹ / ₂	ALX6ST4	5 ⁷ / ₈	2 ⁷ / ₈	2 ¹ / ₂	1 ⁷ / ₈	1 ¹ / ₂
250	6 SOL.	1 ¹ / ₂ -12	X25ST5	4 ⁷ / ₈	1 ⁷ / ₈	2 ¹ / ₂	1 ¹ / ₁₆	3 ³ / ₈	ALX25ST5	4 ⁷ / ₈	1 ⁷ / ₈	2 ¹ / ₂	1 ¹ / ₁₆	3 ³ / ₈
500	6 SOL.	1 ¹ / ₂ -12	X45ST5	5 ¹ / ₈	2 ¹ / ₈	2 ¹ / ₂	1 ³ / ₈	3 ³ / ₈	ALX45ST5	5 ¹ / ₈	2 ¹ / ₈	2 ¹ / ₂	1 ³ / ₈	3 ³ / ₈
1000	2 SOL.	1 ¹ / ₂ -12	X6ST5	5 ⁵ / ₈	2 ⁷ / ₈	2 ¹ / ₂	1 ⁷ / ₈	1 ¹ / ₂	ALX6ST5	5 ⁵ / ₈	2 ⁷ / ₈	2 ¹ / ₂	1 ⁷ / ₈	1 ¹ / ₂
2000	4/0	1 ¹ / ₂ -12	X8ST5	6 ³ / ₈	3 ³ / ₈	2 ¹ / ₂	2 ³ / ₈	1 ¹ / ₂	ALX8ST5	6 ³ / ₈	3 ³ / ₈	2 ¹ / ₂	2 ³ / ₈	1 ¹ / ₂
500	6 SOL.	2-12	X45ST6	5 ¹ / ₈	2 ¹ / ₈	2 ¹ / ₂	1 ³ / ₈	3 ³ / ₈	ALX45ST6	5 ¹ / ₈	2 ¹ / ₈	2 ¹ / ₂	1 ³ / ₈	3 ³ / ₈
1000	2 SOL.	2-12	X6ST6	5 ⁷ / ₈	2 ⁷ / ₈	2 ¹ / ₂	1 ⁷ / ₈	1 ¹ / ₂	ALX6ST6	5 ⁷ / ₈	2 ⁷ / ₈	2 ¹ / ₂	1 ⁷ / ₈	1 ¹ / ₂
2000	4/0	2-12	X8ST6	6 ³ / ₈	3 ³ / ₈	2 ¹ / ₂	2 ³ / ₈	1 ¹ / ₂	ALX8ST6	6 ³ / ₈	3 ³ / ₈	2 ¹ / ₂	2 ³ / ₈	1 ¹ / ₂
500	6 SOL.	2 ¹ / ₄ -12	X45ST65	5 ¹ / ₈	2 ¹ / ₈	2 ¹ / ₂	1 ³ / ₈	3 ³ / ₈	ALX45ST65	5 ¹ / ₈	2 ¹ / ₈	2 ¹ / ₂	1 ³ / ₈	3 ³ / ₈
1000	2 SOL.	2 ¹ / ₄ -12	X6ST65	5 ⁵ / ₈	2 ⁷ / ₈	2 ¹ / ₂	1 ⁷ / ₈	1 ¹ / ₂	ALX6ST65	5 ⁵ / ₈	2 ⁷ / ₈	2 ¹ / ₂	1 ⁷ / ₈	1 ¹ / ₂
2000	4/0	2 ¹ / ₄ -12	X8ST65	6 ³ / ₈	3 ³ / ₈	2 ¹ / ₂	2 ³ / ₈	1 ¹ / ₂	ALX8ST65	6 ³ / ₈	3 ³ / ₈	2 ¹ / ₂	2 ³ / ₈	1 ¹ / ₂
500	6 SOL.	2 ¹ / ₂ -12	X45ST7	5 ¹ / ₈	2 ¹ / ₈	2 ¹ / ₂	1 ³ / ₈	3 ³ / ₈	ALX45ST7	5 ¹ / ₈	2 ¹ / ₈	2 ¹ / ₂	1 ³ / ₈	3 ³ / ₈
1000	2 SOL.	2 ¹ / ₂ -12	X6ST7	5 ⁵ / ₈	2 ⁷ / ₈	2 ¹ / ₂	1 ⁷ / ₈	1 ¹ / ₂	ALX6ST7	5 ⁵ / ₈	2 ⁷ / ₈	2 ¹ / ₂	1 ⁷ / ₈	1 ¹ / ₂
2000	4/0	2 ¹ / ₂ -12	X8ST7	6 ³ / ₈	3 ³ / ₈	2 ¹ / ₂	2 ³ / ₈	1 ¹ / ₂	ALX8ST7	6 ³ / ₈	3 ³ / ₈	2 ¹ / ₂	2 ³ / ₈	1 ¹ / ₂
500	6 SOL.	2 ³ / ₄ -12	X45ST75	5 ⁵ / ₈	2 ¹ / ₈	3	1 ³ / ₈	3 ³ / ₈	ALX45ST75	5 ⁵ / ₈	2 ¹ / ₈	3	1 ³ / ₈	3 ³ / ₈
1000	2 SOL.	2 ³ / ₄ -12	X6ST75	6 ³ / ₈	2 ⁷ / ₈	3	1 ⁷ / ₈	1 ¹ / ₂	ALX6ST75	6 ³ / ₈	2 ⁷ / ₈	3	1 ⁷ / ₈	1 ¹ / ₂
2000	4/0	2 ³ / ₄ -12	X8ST75	6 ⁷ / ₈	3 ³ / ₈	3	2 ³ / ₈	1 ¹ / ₂	ALX8ST75	6 ⁷ / ₈	3 ³ / ₈	3	2 ³ / ₈	1 ¹ / ₂
500	6 SOL.	3-12	X45ST8	5 ⁵ / ₈	2 ¹ / ₈	3	1 ³ / ₈	3 ³ / ₈	ALX45ST8	5 ⁵ / ₈	2 ¹ / ₈	3	1 ³ / ₈	3 ³ / ₈
1000	2 SOL.	3-12	X6ST8	6 ³ / ₈	2 ⁷ / ₈	3	1 ⁷ / ₈	1 ¹ / ₂	ALX6ST8	6 ³ / ₈	2 ⁷ / ₈	3	1 ⁷ / ₈	1 ¹ / ₂
2000	4/0	3-12	X8ST8	6 ⁷ / ₈	3 ³ / ₈	3	2 ³ / ₈	1 ¹ / ₂	ALX8ST8	6 ⁷ / ₈	3 ³ / ₈	3	2 ³ / ₈	1 ¹ / ₂

