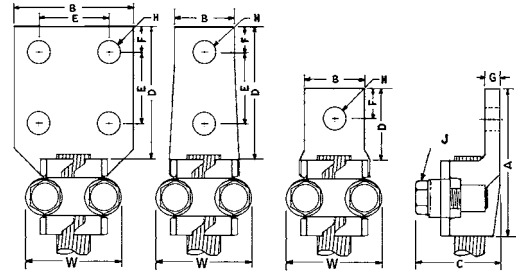


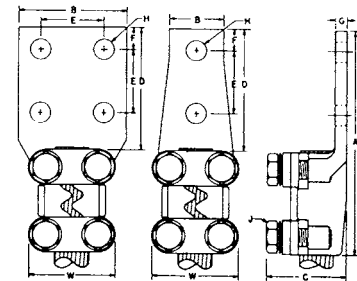
**XPA SERIES**  
Terminal lugs, one cable, straight



Cable Range				Catalog Number	BRONZE CONNECTORS							DUAL-RATED ALUMINUM CONNECTORS									
Max.	Min.	H.T.			Dimension in Inches (Approximate)							Dimension in Inches (Approximate)									
				Number	A	B	C	D	F	G	J	W	Number	A	B	C	D	F	G	J	W
1/0	6	1			XP11A	3 3/4	1 1/2	1 1/4	1 3/4	3/4	1/4	3/8	2	ALXP11A	3 3/4	1 1/2	1 1/4	1 3/4	3/4	1/4	3/8
1/0	6	2		XP11A2N	4 3/4	1 1/2	1 1/4	3 3/4	5/8	1/4	3/8	2	ALXP11A2N	4 3/4	1 1/2	1 1/4	3 3/4	5/8	1/4	3/8	2
1/0	6	4		XP11A4N	4 3/4	3	1 1/4	3 3/4	5/8	1/4	3/8	2	ALXP11A4N	4 3/4	3	1 1/4	3 3/4	5/8	1/4	3/8	2
1/0	6	1		XP12A	3 5/16	1 1/2	1 1/4	1 3/4	3/4	1/4	1/2	2 1/4	ALXP12A	3 5/16	1 1/2	1 1/4	1 3/4	3/4	1/4	1/2	2 1/4
1/0	6	2		XP12A2N	4 13/16	1 1/2	1 1/4	3 3/4	5/8	1/4	1/2	2 1/4	ALXP12A2N	4 13/16	1 1/2	1 1/4	3 3/4	5/8	1/4	1/2	2 1/4
1/0	6	4		XP12A4N	4 13/16	3	1 1/4	3 3/4	5/8	1/4	1/2	2 1/4	ALXP12A4N	4 13/16	3	1 1/4	3 3/4	5/8	1/4	1/2	2 1/4
250	1/0	1		XP13A	3 7/16	1 1/2	1 3/8	1 3/4	3/4	5/16	3/8	2	ALXP13A	3 7/16	1 1/2	1 3/8	1 3/4	3/4	5/16	3/8	2
250	1/0	2		XP13A2N	4 15/16	1 1/2	1 3/8	3 3/4	5/8	5/16	3/8	2	ALXP13A2N	4 15/16	1 1/2	1 3/8	3 3/4	5/8	5/16	3/8	2
250	1/0	4		XP13A4N	4 15/16	3	1 3/8	3 3/4	5/8	5/16	3/8	2	ALXP13A4N	4 15/16	3	1 3/8	3 3/4	5/8	5/16	3/8	2
250	1/0	1		XP14A	3 5/8	1 1/2	1 3/8	1 3/4	3/4	5/16	1/2	2 1/4	ALXP14A	3 5/8	1 1/2	1 3/8	1 3/4	3/4	5/16	1/2	2 1/4
250	1/0	2		XP14A2N	5 1/8	1 1/2	1 3/8	3 3/4	5/8	5/16	1/2	2 1/4	ALXP14A2N	5 1/8	1 1/2	1 3/8	3 3/4	5/8	5/16	1/2	2 1/4
250	1/0	4		XP14A4N	5 1/8	3	1 3/8	3 3/4	5/8	5/16	1/2	2 1/4	ALXP14A4N	5 1/8	3	1 3/8	3 3/4	5/8	5/16	1/2	2 1/4
500	4/0	1		XP15A	3 5/8	1 1/2	1 3/4	1 3/4	3/4	3/8	1/2	2 1/4	ALXP15A	3 5/8	1 1/2	1 3/4	1 3/4	3/4	3/8	1/2	2 1/4
500	4/0	2		XP15A2N	5 1/8	1 1/2	1 3/4	3 3/4	5/8	3/8	1/2	2 1/4	ALXP15A2N	5 1/8	1 1/2	1 3/4	3 3/4	5/8	3/8	1/2	2 1/4
500	4/0	4		XP15A4N	5 1/8	3	1 3/4	3 3/4	5/8	3/8	1/2	2 1/4	ALXP15A4N	5 1/8	3	1 3/4	3 3/4	5/8	3/8	1/2	2 1/4
1000	500	1		XP16A	3 3/4	1 1/2	2 5/16	1 3/4	3/4	7/16	1/2	2 1/2	ALXP16A	3 3/4	1 1/2	2 5/16	1 3/4	3/4	7/16	1/2	2 1/2
1000	500	2		XP16A2N	5 1/4	1 1/2	2 5/16	3 3/4	5/8	7/16	1/2	2 1/2	ALXP16A2N	5 1/4	1 1/2	2 5/16	3 3/4	5/8	7/16	1/2	2 1/2
1000	500	4		XP16A4N	5 1/4	3	2 5/16	3 3/4	5/8	7/16	1/2	2 1/2	ALXP16A4N	5 1/4	3	2 5/16	3 3/4	5/8	7/16	1/2	2 1/2

\*\* Holes in Tang

**PA SERIES**  
Terminal lugs, one cable/tube straight



Cable Range				Catalog Number	BRONZE CONNECTORS							DUAL-RATED ALUMINUM CONNECTORS									
Max.	Min.	IPS	H.T.		Dimension in Inches (Approximate)							Dimension in Inches (Approximate)									
				Number	A	B	C	D	F	G	J	W	Number	A	B	C	D	F	G	J	W
2/0	#4	1/8	2		P2A2N	5 3/4	1 3/8	1 5/16	3 3/4	5/8	9/32	1/2	2 3/8	ALP2A2N	5 3/4	1 3/8	1 5/16	3 3/4	5/8	9/32	1/2
2/0	#4	1/8	4	P2A4N	5 3/4	3	1 5/16	3 3/4	5/8	9/32	1/2	2 3/8	ALP2A4N	5 3/4	3	1 5/16	3 3/4	5/8	9/32	1/2	2 3/8
350	2/0	3/8	2	P4A2N	6 1/8	1 1/2	1 3/4	3 3/16	5/8	5/16	1/2	2 3/8	ALP4A2N	6 1/8	1 1/2	1 3/4	3 5/16	5/8	5/16	1/2	2 3/8
350	2/0	3/8	4	P4A4N	6 1/8	3	1 3/4	3 3/16	5/8	5/16	1/2	2 3/8	ALP4A4N	6 1/8	3	1 3/4	3 5/16	5/8	5/16	1/2	2 3/8
600	350	1/2	2	P5A2N	6 3/16	1 1/2	2 1/8	3 3/8	5/8	3/8	1/2	2 7/16	ALP5A2N	6 3/16	1 1/2	2 1/8	3 3/8	5/8	3/8	1/2	2 7/16
600	350	1/2	4	P5A4N	6 3/16	3	2 1/8	3 3/8	5/8	3/8	1/2	2 7/16	ALP5A4N	6 3/16	3	2 1/8	3 3/8	5/8	3/8	1/2	2 7/16
1000	600	3/4	2	P6A2N	6 1/2	1 3/4	2 1/2	3 1/2	5/8	15/32	1/2	2 9/16	ALP6A2N	6 1/2	1 3/4	2 1/2	3 1/2	5/8	15/32	1/2	2 9/16
1000	600	3/4	4	P6A4N	6 1/2	3	2 1/2	3 1/2	5/8	15/32	1/2	2 9/16	ALP6A4N	6 1/2	3	2 1/2	3 1/2	5/8	15/32	1/2	2 9/16
1500	1000	1	2	P7A2N	6 13/16	2	2 7/8	3 3/8	5/8	9/16	1/2	2 13/16	ALP7A2N	6 13/16	2	2 7/8	3 3/8	5/8	9/16	1/2	2 13/16
1500	1000	1	4	P7A4N	6 13/16	3	2 7/8	3 3/8	5/8	9/16	1/2	2 13/16	ALP7A4N	6 13/16	3	2 7/8	3 3/8	5/8	9/16	1/2	2 13/16
2000	1500	1 1/4	2	P8A2N	7 1/8	2 1/4	3 3/4	3 3/4	5/8	5/8	1/2	3 1/16	ALP8A2N	7 1/8	2 1/4	3 3/4	3 3/4	5/8	5/8	1/2	3 1/16
2000	1500	1 1/4	4	P8A4N	7 1/8	3	3 3/4	3 3/4	5/8	5/8	1/2	3 1/16	ALP8A4N	7 1/8	3	3 3/4	3 3/4	5/8	5/8	1/2	3 1/16

For PA-90 types, add suffix "90" to applicable Catalog Number.

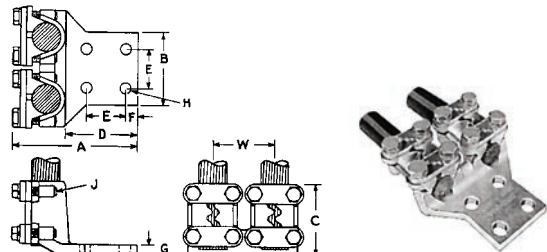
\*\* Holes in Tang

E = 1 3/4"

H = 9/16"

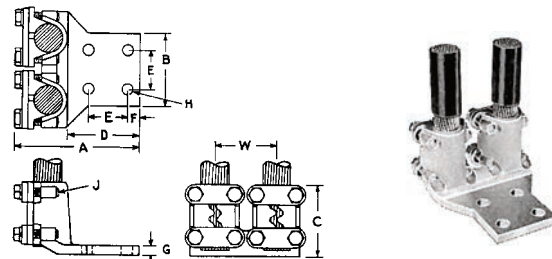
## 2PA SERIES

Terminal lugs, two cables/tube straight



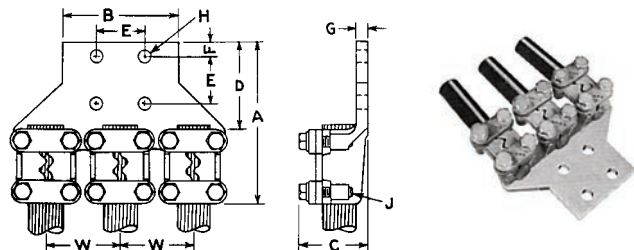
## 2PA-90 SERIES

Terminal lugs, two cables/tube 90°



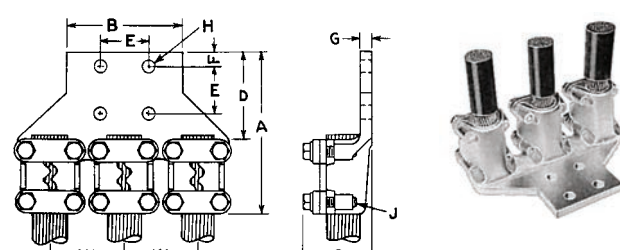
## 3PA SERIES

Terminal lugs, three cables/tube straight



## 3PA-90 SERIES

Terminal lugs, three cables/tube 90°



				BRONZE CONNECTORS									DUAL-RATED ALUMINUM CONNECTORS							
Cable Range		IPS	H.T.	Catalog Number	Dimension in Inches (Approximate)							Catalog Number	Dimension in Inches (Approximate)							
Max.	Min.				A	B	C	D	F	G	W		A	B	C	D	F	G	W	
350	2/0	3/8	4	2P4A4N	6 1/8	3	1 3/4	3 5/16	5/8	3/8	2 5/8	AL2P4A4N	6 1/8	3	1 3/4	3 5/16	5/8	3/8	2 5/8	
600	350	1/2	4	2P5A4N	6 3/16	3	2	3 3/8	5/8	7/16	2 5/8	AL2P5A4N	6 3/16	3	2	3 3/8	5/8	7/16	2 5/8	
1000	600	3/4	4	2P6A4N	6 1/2	3	2 5/16	3 1/2	5/8	7/16	3	AL2P6A4N	6 1/2	3	2 5/16	3 1/2	5/8	7/16	3	
1500	1000	1	4	2P7A4N	6 3/4	3 1/2	2 7/8	3 5/8	5/8	9/16	3 1/2	AL2P7A4N	6 3/4	3 1/2	2 7/8	3 5/8	5/8	9/16	3 1/2	
2000	1500	1 1/4	4	2P8A4N	7 3/8	4	3 1/4	4	5/8	5/8	3 5/8	AL2P8A4N	7 3/8	4	3 1/4	4	5/8	5/8	3 5/8	
350	2/0	3/8	4	2P4A4N90	5 1/16	3	3 5/16	3 5/16	5/8	3/8	2 5/8	AL2P4A4N90	5 1/16	3	3 5/16	3 5/16	5/8	3/8	2 5/8	
600	350	1/2	4	2P5A4N90	5 1/2	3	3 3/8	3 3/8	5/8	7/16	2 5/8	AL2P5A4N90	5 1/2	3	3 3/8	3 3/8	5/8	7/16	2 5/8	
1000	600	3/4	4	2P6A4N90	6	3	3 3/16	3 1/2	5/8	7/16	3	AL2P6A4N90	6	3	3 3/16	3 1/2	5/8	7/16	3	
1500	1000	1	4	2P7A4N90	6 1/2	3 1/2	3 3/8	3 5/8	5/8	9/16	3 1/2	AL2P7A4N90	6 1/2	3 1/2	3 3/8	3 5/8	5/8	9/16	3 1/2	
2000	1500	1 1/4	4	2P8A4N90	7 1/4	4	4 1/8	4	5/8	5/8	3 5/8	AL2P8A4N90	7 1/4	4	4 1/8	4	5/8	5/8	3 5/8	
350	2/0	3/8	4	3P4A4N	6 1/8	3 1/2	1 3/4	3 3/8	5/8	3/8	2 5/8	AL3P4A4N	6 1/8	3 1/2	1 3/4	3 3/8	5/8	3/8	2 5/8	
600	350	1/2	4	3P5A4N	6 3/16	4	2 1/8	3 3/8	5/8	7/16	2 5/8	AL3P5A4N	6 3/16	4	2 1/8	3 3/8	5/8	7/16	2 5/8	
1000	600	3/4	4	3P6A4N	6 1/2	4	2 1/2	3 1/2	5/8	1/2	3	AL3P6A4N	6 1/2	4	2 1/2	3 1/2	5/8	1/2	3	
1500	1000	1	4	3P7A4N	6 3/16	4	7 1/8	3 5/8	3/8	9/16	3 1/2	AL3P7A4N	6 3/16	4	7 1/8	3 5/8	3/4	9/16	3 1/2	
2000	1500	1 1/4	4	3P8A4N	7 3/8	4 1/2	3 3/4	4	7/8	5/8	3 5/8	AL3P8A4N	7 3/8	4 1/2	3 3/4	4	7/8	5/8	3 5/8	
350	2/0	3/8	4	3P4A4N90	5 1/16	3 1/2	3 5/16	3 5/16	5/8	3/8	2 5/8	AL3P4A4N90	5 1/16	3 1/2	3 5/16	3 5/16	5/8	3/8	2 5/8	
600	350	1/2	4	3P5A4N90	5 1/2	4	3 3/8	3 3/8	5/8	7/16	2 5/8	AL3P5A4N90	5 1/2	4	3 3/8	3 3/8	5/8	7/16	2 5/8	
1000	600	3/4	4	3P6A4N90	6	4	3 3/8	3 1/2	5/8	1/2	3	AL3P6A4N90	6	4	3 3/8	3 1/2	5/8	1/2	3	
1500	1000	1	4	3P7A4N90	6 1/2	4	3 3/8	3 5/8	5/8	9/16	3 1/2	AL3P7A4N90	6 1/2	4	3 3/8	3 5/8	5/8	9/16	3 1/2	
2000	1500	1 1/4	4	3P8A4N90	7 1/4	4 1/2	4 1/8	4	5/8	5/8	3 5/8	AL3P8A4N90	7 1/4	4 1/2	4 1/8	4	5/8	5/8	3 5/8	
350	2/0	3/8	4	4P4A4N	6 1/8	3 1/2	1 3/4	3 3/8	5/8	3/8	2 5/8	AL4P4A4N	6 1/8	3 1/2	1 3/4	3 3/8	5/8	3/8	2 5/8	
600	350	1/2	4	4P5A4N	6 3/16	4	2 1/8	3 3/8	5/8	7/16	2 5/8	AL4P5A4N	6 3/16	4	2 1/8	3 3/8	5/8	7/16	2 5/8	
1000	600	3/4	4	4P6A4N	6 1/2	4	2 1/2	3 1/2	5/8	1/2	3	AL4P6A4N	6 1/2	4	2 1/2	3 1/2	5/8	1/2	3	
1500	1000	1	4	4P7A4N	6 3/16	4	2 7/8	3 5/8	3/4	9/16	3 1/2	AL4P7A4N	6 3/16	4	2 7/8	3 5/8	3/4	9/16	3 1/2	
2000	1500	1 1/4	4	4P8A4N	7 3/8	4 1/2	3 3/4	4	7/8	5/8	3 5/8	AL4P8A4N	7 3/8	4 1/2	3 3/4	4	7/8	5/8	3 5/8	
350	2/0	3/8	4	4P4A4N90	5 1/16	3 1/2	3 5/16	3 5/16	5/8	3/8	2 5/8	AL4P4A4N90	5 1/16	3 1/2	3 5/16	3 5/16	5/8	3/8	2 5/8	
600	350	1/2	4	4P5A4N90	5 1/2	4	3 3/8	3 3/8	5/8	7/16	2 5/8	AL4P5A4N90	5 1/2	4	3 3/8	3 3/8	5/8	7/16	2 5/8	
1000	600	3/4	4	4P6A4N90	6	4	3 3/8	3 1/2	5/8	1/2	3	AL4P6A4N90	6	4	3 3/8	3 1/2	5/8	1/2	3	
1500	1000	1	4	4P7A4N90	6 1/2	4	3 3/8	3 5/8	5/8	9/16	3 1/2	AL4P7A4N90	6 1/2	4	3 3/8	3 5/8	5/8	9/16	3 1/2	
2000	1500	1 1/4	4	4P8A4N90	7 1/4	4 1/2	4 1/8	4	5/8	5/8	3 5/8	AL4P8A4N90	7 1/4	4 1/2	4 1/8	4	5/8	5/8	3 5/8	

\*\* Holes in Tang

E = 1 3/4"  
H = 9/16"  
J = 1/2"