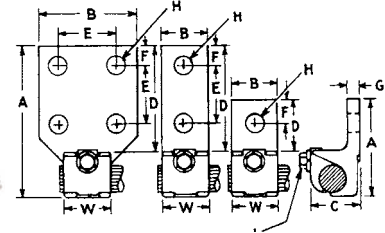


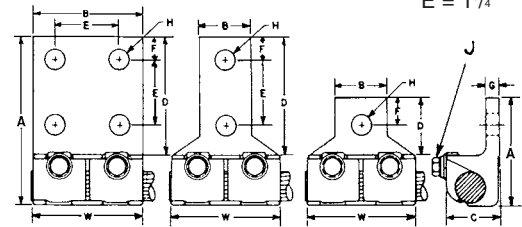
JAR SERIES

Terminal lugs, one cable 90°



Cable Range		H.T.	BRONZE CONNECTORS									DUAL-RATED ALUMINUM CONNECTORS										
Max.	Min.		Catalog Number	Dimension in Inches (Approximate)									Catalog Number	Dimension in Inches (Approximate)								
			A	B	C	D	F	G	H	J	W	A	B	C	D	F	G	H	J	W		
#1	#4	1	J2AR	1 ⁵ / ₈	2 ⁵ / ₃₂	1 ¹ / ₁₆	2 ⁷ / ₃₂	3/8	3/16	9/32	5/16	2 ⁹ / ₃₂	ALJ2AR	1 ¹⁵ / ₁₆	1 ⁵ / ₁₆	1 ⁵ / ₁₆	1	7/16	1/4	9/32	5/16	1 ³ / ₈
1/0	#4	1	J3AR	1 ¹⁵ / ₁₆	2 ⁹ / ₃₂	7/8	1	1 ⁵ / ₃₂	7/32	1 ³ / ₃₂	5/16	3 ¹ / ₃₂	ALJ2AR2N	4 ³ / ₁₆	1 ¹ / ₁₆	1 ⁵ / ₁₆	3/4	5/8	1/4	9/16	5/16	1 ⁵ / ₁₆
1/0	#4	2											ALJ4AR	2 ⁷ / ₁₆	1 ³ / ₁₆	1 ³ / ₁₆	1 ¹ / ₄	9/16	5/16	7/16	5/16	3/16
2/0	1/0	1	J4AR	4 ⁵ / ₁₆	1 ¹ / ₁₆	1	3/4	5/8	1/4	9/16	5/16	1 ³ / ₁₆	ALJ4AR2N	4 ⁷ / ₁₆	1 ¹ / ₄	1 ³ / ₁₆	3/4	5/8	5/16	9/16	5/16	1 ³ / ₁₆
4/0	1/0	2											ALJ5AR	2 ⁷ / ₈	1 ³ / ₈	1 ³ / ₈	1 ¹ / ₂	2 ¹ / ₃	1 ³ / ₃₂	1 ⁷ / ₃₂	3/8	1 ³ / ₈
4/0	2/0	1	J5AR	2 ⁷ / ₈	1 ¹ / ₃₂	1 ¹ / ₄	1 ³ / ₈	2 ¹ / ₃₂	9/32	1 ⁷ / ₃₂	3/8	1 ¹¹ / ₃₂	ALJ5AR2N	4 ⁷ / ₈	1 ³ / ₈	1 ³ / ₈	3/4	2	1 ³ / ₃₂	9/16	3/8	1 ³ / ₁₆
4/0	2/0	2											ALJ5AR4N	4 ⁷ / ₈	3	1 ³ / ₈	3/4	5/8	1 ³ / ₃₂	9/16	3/8	1 ¹¹ / ₃₂
350	4/0	1	J6AR	4 ¹⁷ / ₃₂	1 ⁷ / ₃₂	1 ¹ / ₄	3 ³ / ₃₂	5/8	9/32	9/16	3/8	1 ¹¹ / ₃₂	ALJ6AR	2 ⁷ / ₈	1 ³ / ₈	1 ³ / ₈	1 ¹ / ₂	2 ¹ / ₃	1 ³ / ₃₂	1 ⁷ / ₃₂	3/8	1 ³ / ₈
350	4/0	2											ALJ6AR2N	4 ¹⁵ / ₁₆	1 ⁵ / ₈	1 ⁵ / ₈	3 ³ / ₈	3/4	1 ⁵ / ₃₂	9/16	3/8	1 ⁹ / ₁₆
350	4/0	4	J6AR4N	4 ¹⁷ / ₃₂	3	1 ¹ / ₄	3 ³ / ₃₂	5/8	9/32	9/16	3/8	1 ¹¹ / ₃₂	ALJ6AR4N	4 ¹⁵ / ₁₆	3	1 ⁵ / ₈	3 ³ / ₈	5/8	1 ⁵ / ₃₂	9/16	3/8	1 ⁹ / ₁₆
500	350	1	J7AR	3 ¹ / ₁₆	1 ⁷ / ₁₆	1 ¹³ / ₃₂	1 ⁵ / ₈	3/4	5/16	9/16	3/8	1 ⁹ / ₁₆	ALJ7AR	3 ¹ / ₁₆	1 ⁹ / ₁₆	1 ⁵ / ₈	1 ⁷ / ₈	5/8	5/8	2 ¹ / ₃₂	7/16	1 ¹³ / ₁₆
500	350	2											ALJ7AR2N	4 ¹⁵ / ₁₆	1 ⁵ / ₈	1 ⁵ / ₈	3 ³ / ₈	3/4	1 ⁵ / ₃₂	9/16	3/8	1 ⁹ / ₁₆
500	350	4	J7AR4N	4 ¹⁵ / ₁₆	3	1 ⁵ / ₈	3 ³ / ₈	5/8	5/16	9/16	3/8	1 ⁹ / ₁₆	ALJ7AR4N	4 ¹⁵ / ₁₆	3	1 ⁵ / ₈	3 ³ / ₈	5/8	1 ⁵ / ₃₂	9/16	3/8	1 ⁹ / ₁₆
750	500	1	J8AR	3 ¹⁷ / ₃₂	1 ¹¹ / ₁₆	1 ¹¹ / ₁₆	1 ²⁷ / ₃₂	7/8	3/8	2 ¹ / ₃₂	7/16	1 ²⁹ / ₃₂	ALJ8AR	4 ³ / ₁₆	2 ¹ / ₁₆	2 ³ / ₁₆	2 ¹ / ₈	5/8	2 ¹ / ₃₂	1 ¹ / ₁₆	1/2	2 ¹ / ₁₆
750	500	2											ALJ8AR2N	5 ³ / ₁₆	3	1 ¹⁵ / ₁₆	3 ³ / ₈	5/8	7/16	9/16	1/2	2 ⁵ / ₃₂
750	500	4	J8AR4N	5 ³ / ₁₆	3	1 ¹⁵ / ₁₆	3 ³ / ₈	5/8	7/16	9/16	1/2	2 ⁵ / ₃₂	ALJ8AR4N	5 ³ / ₁₆	3 ³ / ₄	2 ³ / ₁₆	3 ¹ / ₂	5/8	2 ¹ / ₃₂	9/16	1/2	2 ¹ / ₁₆

** Holes in Tang

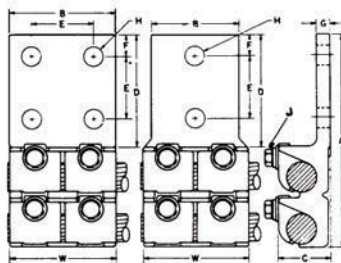


JJAR SERIES

Terminal lugs, one cable 90°

Cable Range		H.T.	BRONZE CONNECTORS									DUAL-RATED ALUMINUM CONNECTORS										
Max.	Min.		Catalog Number	Dimension in Inches (Approximate)									Catalog Number	Dimension in Inches (Approximate)								
			A	B	C	D	F	G	H	J	W	A	B	C	D	F	G	H	J	W		
#1	#4	1	JJ2AR	1 ³ / ₄	3/4	1 ¹³ / ₁₆	3/16	3/8	3/16	1 ³ / ₃₂	5/16	1 ³ / ₄	ALJJ2AR	1 ¹⁵ / ₁₆	1 ⁵ / ₁₆	1 ⁵ / ₁₆	1	7/16	1/4	9/32	5/16	3 ⁵ / ₈
1/0	#4	1	JJ3AR	2 ¹ / ₁₆	1 ⁵ / ₁₆	1 ¹³ / ₁₆	1	7/16	7/32	1 ³ / ₃₂	5/16	2 ¹ / ₈	ALJJ2AR2N	4 ³ / ₁₆	1 ¹ / ₁₆	1 ⁵ / ₁₆	3/4	5/8	1/4	9/16	5/16	3 ⁵ / ₈
1/0	#4	2											ALJJ4AR	2 ⁷ / ₁₆	1 ³ / ₁₆	1 ³ / ₁₆	1 ¹ / ₄	9/16	5/16	7/16	5/16	3 ³ / ₄
2/0	1/0	2	JJ3AR2N	4 ³ / ₁₆	1 ¹ / ₁₆	1 ¹³ / ₁₆	3 ¹ / ₈	5/8	7/32	9/16	5/16	2 ¹ / ₈	ALJJ4AR2N	4 ⁷ / ₁₆	1 ¹ / ₄	1 ³ / ₁₆	3/4	5/8	5/16	9/16	5/16	3 ³ / ₄
4/0	1/0	1	JJ4AR	2 ⁵ / ₁₆	1 ¹ / ₁₆	1	1 ¹ / ₈	9/16	1/4	9/16	5/16	2 ⁷ / ₁₆	ALJJ5AR	2 ⁷ / ₈	1 ³ / ₈	1 ³ / ₈	1 ¹ / ₂	1 ¹ / ₁₆	1 ³ / ₃₂	1 ⁷ / ₃₂	3/8	4
4/0	1/0	2											ALJJ4AR2N	4 ⁷ / ₁₆	1 ¹ / ₄	1 ³ / ₁₆	3/4	5/8	1 ³ / ₃₂	9/16	3/8	2 ¹ / ₁₆
4/0	2/0	2	JJ4AR2	4 ⁷ / ₁₆	1 ¹ / ₁₆	1	3/4	7/16	1/4	1 ³ / ₃₂	5/16	2 ⁷ / ₁₆	ALJJ5AR2N	4 ⁷ / ₈	1 ³ / ₈	1 ³ / ₈	3/4	5/8	1 ³ / ₃₂	9/16	3/8	4
350	4/0	1	JJ5AR	2 ¹¹ / ₁₆	1 ¹ / ₄	1 ¹ / ₄	1 ³ / ₈	9/16	9/32	9/16	3/8	2 ² / ₄	ALJJ6AR	3 ¹ / ₁₆	1 ⁹ / ₁₆	1 ⁵ / ₈	1 ⁵ / ₈	3/4	1 ⁵ / ₃₂	9/16	3/8	4 ¹ / ₈
350	4/0	2											ALJJ5AR4N	4 ⁵ / ₈	3	1 ¹ / ₄	3 ⁵ / ₁₆	5/8	9/32	9/16	3/8	2 ² / ₄
500	350	1	JJ6AR	3 ¹ / ₈	1 ⁷ / ₁₆	1 ⁷ / ₁₆	1 ⁵ / ₈	3/4	5/16	9/16	3/8	3 ¹ / ₄	ALJJ6AR4N	4 ¹⁵ / ₁₆	3	1 ⁵ / ₈	3 ³ / ₈	5/8	1 ⁵ / ₃₂	9/16	3/8	4 ¹ / ₈
500	350	2											ALJJ7AR	3 ¹ / ₁₆	1 ¹³ / ₁₆	1 ³ / ₄	1 ¹³ / ₁₆	3/4	3/8	9/16	7/16	3 ³ / ₄
750	500	1	JJ7AR	3 ⁹ / ₁₆	1 ¹¹ / ₁₆	1 ³ / ₄	1 ¹³ / ₁₆	3/4	3/8	9/16	7/16	3 ³ / ₄	ALJJ7AR4N	5 ³ / ₁₆	3	1 ¹⁵ / ₁₆	3 ¹ / ₂	5/8	5/8	9/16	7/16	4 ³ / ₄
750	500	2											ALJJ8AR	3 ¹⁵ / ₁₆	1 ¹⁵ / ₁₆	1 ¹⁵ / ₁₆	7/8	7/8	7/16	9/16	7/16	4 ⁷ / ₁₆
1000	750	1	JJ8AR	3 ¹⁵ / ₁₆	1 ¹⁵ / ₁₆	1 ¹⁵ / ₁₆	7/8	7/8	7/16	9/16	1/2	4 ⁷ / ₁₆	ALJJ8AR4N	5 ³ / ₁₆	3 ¹ / ₄	2 ³ / ₁₆	3 ¹ / ₂	5/8	2 ¹ / ₃₂	9/16	1/2	5 ¹ / ₄
1000	750	2											ALJJ8AR2N	5 ³ / ₁₆	3	2 ³ / ₁₆	3 ¹ / ₂	5/8	2 ¹ / ₃₂	9/16	1/2	5 ¹ / ₄
1000	750	4	JJ8AR4N	5 ³ / ₁₆	3	1 ¹⁵ / ₁₆	3 ³ / ₈	5/8	7/16	9/16	1/2	4 ⁷ / ₁₆	ALJJ8AR4N	5 ³ / ₁₆	3 ¹ / ₄	2 ³ / ₁₆	3 ¹ / ₂	5/8	2 ¹ / ₃₂	9/16	1/2	5 ¹ / ₄

** Holes in Tang

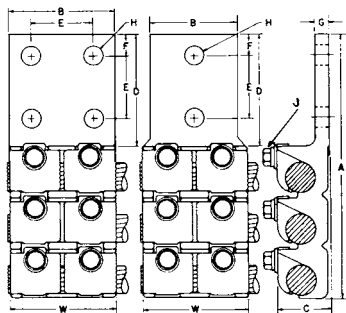


2JJAR SERIES

Terminal lugs, two cables

Cable Range			BRONZE CONNECTORS								DUAL-RATED ALUMINUM CONNECTORS							
Max.	Min.	H.T.	Catalog Number	Dimension in Inches (Approximate)							Catalog Number	Dimension in Inches (Approximate)						
				A	B	C	D	G	J	W		A	B	C	D	G	J	W
#1	#4	2	2JJ2AR2N	4 ³ / ₄	1 ⁵ / ₁₆	3 ³ / ₄	3	7 ⁷ / ₃₂	5 ⁵ / ₁₆	1 ¹¹ / ₁₆	AL2JJ2AR2N	5 ¹ / ₄	1 ¹ / ₈	1 ¹⁵ / ₁₆	3 ¹ / ₄	9 ⁹ / ₃₂	5 ⁵ / ₁₆	3 ⁵ / ₈
1/0	#4	2	2JJ3AR2N	5 ¹ / ₈	1 ¹¹ / ₁₆	1 ¹³ / ₁₆	3 ¹ / ₈	1 ¹ / ₄	5 ⁵ / ₁₆	2 ¹ / ₈	AL2JJ4AR2N	5 ¹¹ / ₁₆	1 ¹ / ₈	1 ³ / ₁₆	3 ¹ / ₄	5 ⁵ / ₁₆	5 ⁵ / ₁₆	3 ³ / ₄
2/0	1/0	2									AL2JJ4AR4N	5 ¹¹ / ₁₆	3	1 ³ / ₁₆	3 ¹ / ₄	5 ⁵ / ₁₆	5 ⁵ / ₁₆	3 ³ / ₄
4/0	1/0	2	2JJ4AR2N	5 ⁷ / ₁₆	1 ¹ / ₈	1	3 ¹ / ₄	1 ¹ / ₄	5 ⁵ / ₁₆	2 ¹ / ₁₆	AL2JJ5AR2N	6 ¹ / ₄	2 ¹ / ₄	1 ³ / ₈	3 ³ / ₈	1 ¹³ / ₃₂	3 ³ / ₈	4
4/0	1/0	4									AL2JJ5AR4N	6 ¹ / ₄	3	1 ³ / ₈	3 ³ / ₈	1 ¹³ / ₃₂	3 ³ / ₈	4
4/0	2/0	2	2JJ6AR2N	6 ³ / ₈	2 ¹ / ₂	1 ⁷ / ₁₆	3 ³ / ₈	3 ³ / ₈	3 ³ / ₈	3 ¹ / ₄	AL2JJ6AR2N	6 ³ / ₄	2 ¹ / ₂	1 ⁵ / ₈	3 ¹ / ₂	1 ¹⁵ / ₃₂	3 ³ / ₈	4 ¹ / ₈
4/0	2/0	4									AL2JJ6AR4N	6 ³ / ₄	3	1 ⁵ / ₈	3 ¹ / ₂	1 ¹⁵ / ₃₂	3 ³ / ₈	4 ¹ / ₈
350	4/0	2	2JJ5AR2N	5 ¹⁵ / ₁₆	2 ² / ₃₂	1 ¹ / ₄	3 ⁵ / ₁₆	5 ⁵ / ₁₆	3 ³ / ₈	2 ³ / ₄	AL2JJ7AR2N	7 ¹ / ₈	3	1 ¹⁵ / ₁₆	3 ¹ / ₂	5 ⁵ / ₈	7 ¹ / ₁₆	4 ³ / ₄
350	4/0	4	2JJ5AR4N	5 ¹⁵ / ₁₆	3	1 ¹ / ₄	3 ⁵ / ₁₆	5 ⁵ / ₁₆	3 ³ / ₈	2 ³ / ₄	AL2JJ7AR4N	7 ¹ / ₈	3	1 ¹⁵ / ₁₆	3 ¹ / ₂	5 ⁵ / ₈	7 ¹ / ₁₆	4 ³ / ₄
500	350	2	2JJ6AR2N	6 ³ / ₈	2 ¹ / ₂	1 ⁷ / ₁₆	3 ³ / ₈	3 ³ / ₈	3 ³ / ₈	3 ¹ / ₄	AL2JJ8AR2N	7 ³ / ₄	3 ¹ / ₄	2 ³ / ₁₆	3 ¹ / ₂	2 ¹ / ₃₂	1 ¹ / ₂	5 ¹ / ₄
500	350	4	2JJ6AR4N	6 ³ / ₈	3	1 ⁷ / ₁₆	3 ³ / ₈	3 ³ / ₈	3 ³ / ₈	3 ¹ / ₄	AL2JJ8AR4N	7 ³ / ₄	3 ¹ / ₄	2 ³ / ₁₆	3 ¹ / ₂	2 ¹ / ₃₂	1 ¹ / ₂	5 ¹ / ₄
750	500	2	2JJ7AR2N	6 ¹⁵ / ₁₆	3	1 ³ / ₄	3 ³ / ₈	7 ¹ / ₁₆	7 ¹ / ₁₆	3 ³ / ₄	AL2JJ7AR2N	7 ¹ / ₈	3	1 ¹⁵ / ₁₆	3 ¹ / ₂	5 ⁵ / ₈	7 ¹ / ₁₆	4 ³ / ₄
750	500	4	2JJ7AR4N	6 ¹⁵ / ₁₆	3	1 ³ / ₄	3 ³ / ₈	7 ¹ / ₁₆	7 ¹ / ₁₆	3 ³ / ₄	AL2JJ7AR4N	7 ¹ / ₈	3	1 ¹⁵ / ₁₆	3 ¹ / ₂	5 ⁵ / ₈	7 ¹ / ₁₆	4 ³ / ₄
1000	750	2	2JJ8AR2N	7 ³ / ₈	3 ⁷ / ₃₂	1 ¹⁵ / ₁₆	3 ³ / ₈	1 ¹ / ₂	1 ¹ / ₂	4 ⁷ / ₁₆	AL2JJ8AR2N	7 ³ / ₄	3 ¹ / ₄	2 ³ / ₁₆	3 ¹ / ₂	2 ¹ / ₃₂	1 ¹ / ₂	5 ¹ / ₄
1000	750	4	2JJ8AR4N	7 ³ / ₈	3 ⁷ / ₃₂	1 ¹⁵ / ₁₆	3 ³ / ₈	1 ¹ / ₂	1 ¹ / ₂	4 ⁷ / ₁₆	AL2JJ8AR4N	7 ³ / ₄	3 ¹ / ₄	2 ³ / ₁₆	3 ¹ / ₂	2 ¹ / ₃₂	1 ¹ / ₂	5 ¹ / ₄

** Holes in Tang



3JJAR SERIES

Terminal lugs, three cables, 90°

#1	#4	2	3JJ2AR2N	5 ¹¹ / ₁₆	1 ⁵ / ₁₆	1 ¹³ / ₁₆	3	7 ⁷ / ₃₂	5 ⁵ / ₁₆	1 ³ / ₄	AL3JJ2AR2N	6 ⁵ / ₁₆	1 ¹ / ₈	1 ¹⁵ / ₁₆	3 ¹ / ₄	9 ⁹ / ₃₂	5 ⁵ / ₁₆	3 ⁵ / ₈
1/0	#4	2	3JJ3AR2N	6 ³ / ₁₆	1 ¹¹ / ₁₆	1 ¹³ / ₁₆	3 ¹ / ₈	1 ¹ / ₄	5 ⁵ / ₁₆	2 ¹ / ₈	AL3JJ4AR2N	7 ¹ / ₁₆	1 ¹ / ₈	1 ³ / ₁₆	3 ¹ / ₄	5 ⁵ / ₁₆	5 ⁵ / ₁₆	3 ³ / ₄
2/0	1/0	2									AL3JJ4AR4N	7 ¹ / ₁₆	3	1 ³ / ₁₆	3 ¹ / ₄	5 ⁵ / ₁₆	5 ⁵ / ₁₆	3 ³ / ₄
4/0	1/0	2	3JJ4AR2N	6 ⁵ / ₈	1 ⁷ / ₈	1	3 ¹ / ₄	1 ¹ / ₄	5 ⁵ / ₁₆	2 ¹ / ₁₆	AL3JJ5AR2N	7 ³ / ₄	2 ¹ / ₄	1 ³ / ₈	3 ³ / ₈	1 ¹³ / ₃₂	3 ³ / ₈	4
4/0	1/0	4									AL3JJ5AR4N	7 ³ / ₄	3	1 ³ / ₈	3 ³ / ₈	1 ¹³ / ₃₂	3 ³ / ₈	4
4/0	2/0	2	3JJ6AR2N	7 ¹ / ₈	2 ¹ / ₂	1 ⁷ / ₁₆	3 ³ / ₈	3 ³ / ₈	3 ³ / ₈	3 ¹ / ₄	AL3JJ6AR2N	8 ¹ / ₁₆	2 ¹ / ₂	1 ⁵ / ₈	3 ¹ / ₂	1 ¹⁵ / ₃₂	3 ³ / ₈	4 ¹ / ₈
4/0	2/0	4									AL3JJ6AR4N	8 ¹ / ₁₆	3	1 ⁵ / ₈	3 ¹ / ₂	1 ¹⁵ / ₃₂	3 ³ / ₈	4 ¹ / ₈
350	4/0	2	3JJ5AR2N	7 ¹ / ₄	2 ² / ₃₂	1 ¹ / ₄	3 ⁵ / ₁₆	5 ⁵ / ₁₆	3 ³ / ₈	2 ³ / ₄	AL3JJ7AR2N	9 ³ / ₁₆	3	1 ¹⁵ / ₁₆	3 ¹ / ₂	5 ⁵ / ₈	7 ¹ / ₁₆	4 ³ / ₄
350	4/0	4	3JJ5AR4N	7 ¹ / ₄	3	1 ¹ / ₄	3 ⁵ / ₁₆	5 ⁵ / ₁₆	3 ³ / ₈	2 ³ / ₄	AL3JJ7AR4N	9 ³ / ₁₆	3	1 ¹⁵ / ₁₆	3 ¹ / ₂	5 ⁵ / ₈	7 ¹ / ₁₆	4 ³ / ₄
500	350	2	3JJ6AR2N	7 ¹ / ₈	2 ¹ / ₂	1 ⁷ / ₁₆	3 ³ / ₈	3 ³ / ₈	3 ³ / ₈	3 ¹ / ₄	AL3JJ8AR2N	9 ³ / ₁₆	3 ¹ / ₄	2 ³ / ₁₆	3 ¹ / ₂	2 ¹ / ₃₂	1 ¹ / ₂	5 ¹ / ₄
500	350	4	3JJ6AR4N	7 ¹ / ₈	3	1 ⁷ / ₁₆	3 ³ / ₈	3 ³ / ₈	3 ³ / ₈	3 ¹ / ₄	AL3JJ8AR4N	9 ³ / ₁₆	3 ¹ / ₄	2 ³ / ₁₆	3 ¹ / ₂	2 ¹ / ₃₂	1 ¹ / ₂	5 ¹ / ₄
750	500	2	3JJ7AR2N	8 ¹ / ₂	3	1 ³ / ₄	3 ³ / ₈	7 ¹ / ₁₆	7 ¹ / ₁₆	3 ³ / ₄	AL3JJ7AR2N	9 ³ / ₁₆	3	1 ¹⁵ / ₁₆	3 ¹ / ₂	5 ⁵ / ₈	7 ¹ / ₁₆	4 ³ / ₄
750	500	4	3JJ7AR4N	8 ¹ / ₂	3	1 ³ / ₄	3 ³ / ₈	7 ¹ / ₁₆	7 ¹ / ₁₆	3 ³ / ₄	AL3JJ7AR4N	9 ³ / ₁₆	3	1 ¹⁵ / ₁₆	3 ¹ / ₂	5 ⁵ / ₈	7 ¹ / ₁₆	4 ³ / ₄
1000	750	2	3JJ8AR2N	9 ³ / ₈	3 ⁷ / ₃₂	1 ¹⁵ / ₁₆	3 ³ / ₈	1 ¹ / ₂	1 ¹ / ₂	4 ⁷ / ₁₆	AL3JJ8AR2N	9 ³ / ₁₆	3 ¹ / ₄	2 ³ / ₁₆	3 ¹ / ₂	2 ¹ / ₃₂	1 ¹ / ₂	5 ¹ / ₄
1000	750	4	3JJ8AR4N	9 ³ / ₈	3 ⁷ / ₃₂	1 ¹⁵ / ₁₆	3 ³ / ₈	1 ¹ / ₂	1 ¹ / ₂	4 ⁷ / ₁₆	AL3JJ8AR4N	9 ³ / ₁₆	3 ¹ / ₄	2 ³ / ₁₆	3 ¹ / ₂	2 ¹ / ₃₂	1 ¹ / ₂	5 ¹ / ₄

** Holes in Tang

E = 1³/₄"
F = 5⁵/₈"
H = 9⁹/₁₆"