



## COMPRESSION

### COPPER BUTT SPLICES

Produced from high conductivity seamless copper tubing

Marked with die index and color coded

Tin plated to provide corrosion resistance



For copper cable

#### SC SERIES

#### Standard Barrel

NAED NUMBER	CATALOG NUMBER	WIRE SIZE	COLOR CODE	DIE INDEX	CTN QTY
51808	SC 8	8	RED	6	100
51806	SC 6	6	BLUE	7/374	100
51804	SC 4	4	GRAY	8/346	100
51802	SC 2	2	BROWN	10	50
51800	SC 1	1	GREEN	11/375	50
51810	SC 10	1/0	PINK	12/348	50
51812	SC 20	2/0	BLACK	13	25
51814	SC 30	3/0	ORANGE	14	25
51816	SC 40	4/0	PURPLE	15	25
51818	SC 250	250	YELLOW	16	25
51820	SC 300	300	WHITE	17/298	12
51822	SC 350	350	RED	18/324	12
51824	SC 400	400	BLUE	19/470	6
51826	SC 500	500	BROWN	20/299	6
51828	SC 600	600	GREEN	22/472	6
51830	SC 750	750	BLACK	24/473	3
51832	SC 1000	1000	WHITE	27	3



\* 600 V

#### C SERIES

#### Long Barrel

NAED NUMBER	CATALOG NUMBER	WIRE SIZE	COLOR CODE	DIE INDEX	CTN QTY
13005	C 8	8	RED	6	100
13006	C 6	6	BLUE	7/374	100
13004	C 4	4	GRAY	8/346	100
13002	C 2	2	BROWN	10	50
13000	C 1	1	GREEN	11/375	50
13008	C 10	1/0	PINK	12/348	50
13010	C 20	2/0	BLACK	13	25
13012	C 30	3/0	ORANGE	14	25
13014	C 40	4/0	PURPLE	15	25
13016	C 250	250	YELLOW	16	25
13018	C 300	300	WHITE	17/298	12
13020	C 350	350	RED	18/324	12
13022	C 400	400	BLUE	19/470	6
13024	C 500	500	BROWN	20/299	6
13026	C 600	600	GREEN	22/472	6
13028	C 750	750	BLACK	24/473	3
13030	C 1000	1000	White	27	3



\* 600 V  
For heavy duty applications

\*May be used for up to 35KV applications provided proper installation procedures are employed.



## COMPRESSION

# PEEP HOLE STANDARD BARREL COPPER LUGS

Produced from high conductivity seamless copper tubing  
 Allows inspection of the termination to assure complete cable insertion  
 Marked with die index and color coded  
 Tin plated to provide corrosion resistance



For copper cable

### GL SERIES One Hole

NAED NUMBER	CATALOG NUMBER	WIRE SIZE	BOLT SIZE	COLOR CODE	DIE INDEX	CTN QTY
32000	*GL 810	#8	10	RED	6	100
32002	GL 814		1/4			
31999	GL 610		10			
32004	*GL 614	#6	1/4	BLUE	7/374	100
32001	GL 656		5/16			
32003	GL 638		3/8			
32005	GL 414		1/4			
32006	GL 456	#4	5/16	GRAY	8/346	100
32008	GL 438		3/8			
32017	GL 338	#3	3/8	WHITE	9	50
32007	GL 214		1/4			
32009	GL 256	#2	5/16	BROWN	10	50
32010	GL 238		3/8			
32011	GL 114		1/4			
32013	GL 156	#1	5/16	GREEN	11/375	50
32012	GL 138		3/8			
32015	GL 1056		5/16			
32014	*GL 1038	1/0	3/8	PINK	12/348	50
32016	GL 1048		1/2			
32019	GL 2056		5/16			
32018	*GL 2038	2/0	3/8	BLACK	13	25
32020	GL 2048		1/2			
32022	*GL 3038	3/0	3/8	ORANGE	14	25
32024	GL 3048		1/2			
32027	*GL 4038	4/0	3/8	PURPLE	15	25
32026	GL 4048		1/2			
32028	*GL 25048	250	1/2	YELLOW	16	25
32030	*GL 30048	300	1/2	WHITE	17/298	12
32032	*GL 35048	350	1/2	RED	18/324	12
32034	*GL 40048	400	1/2	BLUE	19/470	6
32036	*GL 50048	500	1/2	BROWN	20/299	6
32038	GL 60048	600	1/2	GREEN	22/472	
32040	GL 75048	750	1/2	BLACK	24/473	3
32041	*GL 75058		5/8			
32042	*GL 100058	1000	5/8	WHITE	27	3



\*\*600 V  
 \*NEMA stud drilling



- For angle lugs consult factory for price and availability.
- For 90° angle lugs use L Series
- For blank tangs consult factory for price and availability.

### GL-N SERIES Two Hole NEMA

NAED NUMBER	CATALOG NUMBER	WIRE SIZE	BOLT SIZE	COLOR CODE	DIE INDEX	CTN QTY
32044	GL 20N	2/0	1/2	BLACK	13	
32046	GL 30N	3/0	1/2	ORANGE	14	25
32048	GL 40N	4/0	1/2	PURPLE	15	
32050	GL 250N	250	1/2	YELLOW	16	
32052	GL 300N	300	1/2	WHITE	17/298	12
32054	GL 350N	350	1/2	RED	18/324	12
32056	GL 400N	400	1/2	BLUE	19/470	6
32058	GL 500N	500	1/2	BROWN	20/299	6
32060	GL 600N	600	1/2	GREEN	22/472	6
32062	†GL 750N	750	1/2	BLACK	24/473	3
32064	GL 1000N	1000	1/2	WHITE	27	1



\*\* 600 V

† GL750N lugs have a 1 3/4" tang width, to accommodate side by side NEMA stud spacing.  
 Suffix "N" indicates NEMA tang drilling, 1 3/4" on centers for 1/2" bolts.

\*\*May be used for up to 35KV applications provided proper installation procedures are employed.



# GREAVES

## COMPRESSION

### LONG BARREL COPPER LUGS

Long barrel for heavy duty applications

Produced from high conductivity seamless copper tubing

Tin plated to provide corrosion resistance

Marked with die index and color coded



#### L SERIES

#### One Hole

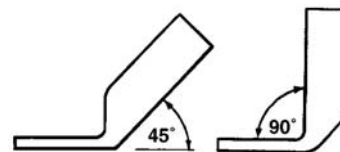
NAED NUMBER	CATALOG NUMBER	WIRE SIZE	BOLT SIZE	COLOR CODE	DIE INDEX	CTN QTY
41103	L 838	#8	3/8	RED	6	100
41105	* L 614		1/4			
41106	L 656	#6	5/16	BLUE	7/374	100
41108	L 638		3/8			
41109	L 414		1/4			
41110	L 456	#4	5/16	GRAY	8/346	100
41115	L 438		3/8			
41117	L 338	#3	3/8	WHITE	9	50
41118	L 214		1/4			
41119	L 256	#2	5/16	BROWN	10	50
41120	L 238		3/8			
41123	L 114		1/4			
41124	L 156	#1	5/16	GREEN	11/375	50
41125	L 138		3/8			
41129	L 1014		1/4			
41130	* L 1038	1/0	3/8	PINK	12/348	50
41135	L 1048		1/2			
41140	* L 2038		3/8			
41145	L 2048	2/0	1/2	BLACK	13	25
41150	* L 3038		3/8			
41155	L 3048	3/0	1/2	ORANGE	14	25
41156	* L 4038		3/8			
41160	L 4048	4/0	1/2	PURPLE	15	25
41164	L 25038		3/8			
41165	* L 25048	250	1/2	YELLOW	16	25
41170	* L 30048	300	1/2	WHITE	17/298	12
41175	* L 35048	350	1/2	RED	18/324	12
41180	L 40048	400	1/2	BLUE	19/470	6
41185	* L 50048	500	1/2	BROWN	20/299	6
41190	L 60048	600	1/2	GREEN	22/472	6
41192	L 75048		1/2			
41195	* L 75058	750	5/8	BLACK	24/473	3
41200	* L 100058	1000	5/8	WHITE	27	
41202	L 125058	1250	5/8	YELLOW	29	1
41204	L 150058	1500	5/8	GREEN	31	
41206	L 200058	2000	5/8	BROWN	34	

For copper cable



\*\*600 V

\*NEMA stud drilling



- For angle lugs consult factory for price and availability.
- For blank tangs consult factory for price and availability.

\*\* May be used for up to 35 KV applications provided proper installation procedures are employed.



# GREAVES

## COMPRESSION

### LONG BARREL COPPER LUGS

Long barrel for heavy duty applications  
Produced from high conductivity seamless copper tubing  
Tin plated to provide corrosion resistance  
Marked with die index and color coded

#### L-N SERIES

#### Two Hole NEMA

NAED NUMBER	CATALOG NUMBER	WIRE SIZE	BOLT		COLOR CODE	DIE INDEX	CTN QTY
			SIZE	SPACING			
33069	L 6N	#6			BLUE	7/347	
33049	L 4N	#4	1/2	1 3/4	GREY	8/346	20
33029	L 2N	#2			BROWN	10	
33019	L 1N	#1			GREEN	11/375	
40000	L 10N	1/0			PINK	12/348	
40005	L 20N	2/0			BLACK	13	
40010	L 30N	3/0	1/2	1 3/4	ORANGE	14	25
40015	L 40N	4/0			PURPLE	15	
40020	L 250N	250			YELLOW	16	
40025	L 300N	300			WHITE	17/298	12
40030	L 350N	350			RED	18/324	12
40035	L 400N	400	1/2	1 3/4	BLUE	19/470	6
40040	L 500N	500			BROWN	20/299	6
40045	L 600N	600			GREEN	22/472	6
40050	† L 750N	750			BLACK	24/473	3
40055	L 1000N	1000	1/2	1 3/4	WHITE	27	1
40056	L 1250N	1250			YELLOW	29	1
40057	L 1500N	1500			GREEN	31	1
40059	L 2000N	2000			BROWN	34	1

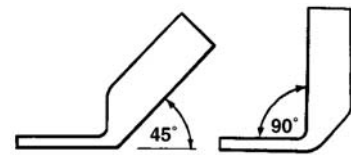
† All Lugs through 750 MCM have a 1 3/4" or less tang width to accommodate side by side NEMA stud spacing.

\*\* May be used for up to 35KV applications provided proper installation procedures are employed.



For copper cable

\*\*600 V



- For angle lugs consult factory for price and availability.
- For blank tangs consult factory for price and availability.

### LONG BARREL STACKING COPPER LUGS

Long barrel for heavy duty applications  
Produced from high conductivity seamless copper tubing  
Tin plated to provide corrosion resistance  
Marked with die index and color coded  
Designed specifically to fit with Greaves LN Series lugs

#### SL-N SERIES

#### Two Hole NEMA

NAED NUMBER	CATALOG NUMBER	WIRE SIZE	BOLT		COLOR CODE	DIE INDEX
			SIZE	SPACING		
71801	SL 20N	2/0			BLACK	13
71802	SL 30N	3/0	1/2	1 3/4	ORANGE	14
71803	SL 40N	4/0			PURPLE	15
71804	SL 250N	250			YELLOW	16
71805	SL 300N	300			WHITE	17/298
71806	SL 350N	350			RED	18/324
71807	SL 400N	400	1/2	1 3/4	BLUE	19/470
71808	SL 500N	500			BROWN	20/299
71809	SL 600N	600			GREEN	22/472
71811	†SL 750N	750	1/2	1 3/4	BLACK	24/473
71812	SL 1000N	1000			WHITE	27

\*\* May be used for up to 35KV applications provided proper installation procedures are employed.

† All lugs through 750 MCM have a 1 3/4" or less tang width to accommodate side by side NEMA stud spacing.

For copper cable

\*\*600 V



#### CAUTION

May not fit competitor lugs.  
Greaves L-N Series lugs are recommended to make a stacking set.



# GREAVES

## COMPRESSION



### LONG BARREL FOUR-HOLE COPPER LUGS

Long barrel for heavy duty applications  
Produced of high conductivity wrought copper  
Tin-plated for corrosion protection  
Marked with die index number

For copper cable  
\*\*600 V

### L-4N SERIES

### Four Hole NEMA

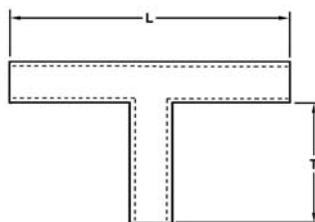
NAED NUMBER	CATALOG NUMBER	WIRE SIZE	BOLT		PAD THICKNESS	COLOR CODE	DIE INDEX	CTN QTY
			SIZE	SPACING				
40082	L 350-4N	350 MCM			3/16	RED	18/324	
40083	L 500-4N	500 MCM			1/4	BROWN	20/299	
40084	L 750-4N	750 MCM			1/4	BLACK	24/473	
40085	L 1000-4N	1000 MCM	1/2	1 3/4	3/8	WHITE	27	1
40086	L 1250-4N	1250 MCM			3/8	YELLOW	29	
40087	L 1500-4N	1500 MCM			11/32	GREEN	31	
40089	L 2000-4N	2000 MCM			15/32	BROWN	34	

Pad width 3 inches. Other sizes available. Consult factory.



### COPPER TEE

High conductivity seamless copper tubing  
Use CRA adapter to accommodate smaller wire size  
Tin plated to provide corrosion resistance  
Long barrel for two die impressions per wire  
Marked with die index number



For copper cable  
\*\*600V



### CCT SERIES

NAED NUMBER	CATALOG NUMBER	WIRE SIZE		DIMENSIONS (NOM)		DIE-MAIN		DIE-TAP	
		MAIN	TAP	L	T	COLOR	INDEX	COLOR	INDEX
40206	CCT6	6	6	3.75	1.50	BLUE	7/347	BLUE	7/347
40204	CCT4	4	4	3.81	1.50	GREY	8/346	GREY	8/346
40202	CCT2	2	2	3.87	1.50	BROWN	10	BROWN	10
40201	CCT1	1	1	3.94	1.50	GREEN	11/375	GREEN	11/375
40210	CCT10	1/0	1/0	4.00	1.50	PINK	12/348	PINK	12/348
40220	CCT20	2/0	2/0	4.16	1.62	BLACK	13	BLACK	13
40230	CCT30	3/0	3/0	4.31	1.68	ORANGE	14	ORANGE	14
40240	CCT40	4/0	4/0	4.44	1.75			PURPLE	15
40241	CCT40-10	4/0	1/0	4.25	1.75	PURPLE	15	PINK	12/348
40242	CCT40-2	4/0	2	4.18	1.75			BROWN	10
40225	CCT250	250	250	4.56	1.75	YELLOW	16	YELLOW	16
40235	CCT350	350	350	5.91	2.19	RED	18/324	RED	18/324
40250	CCT500	500	500	6.72	2.60			BROWN	20/299
40254	CCT500-40	500	4/0	6.47	2.60			PURPLE	15
40252	CCT500-20	500	2/0	6.36	2.60	BROWN	20/299	BLACK	13
40259	CCT500-2	500	2	6.24	2.60			BROWN	10
40275	CCT750	750	750	7.87	3.39	BLACK	24/473	BLACK	24/473

Other sizes also available.

Can be used with reducer bushing(s) to accommodate other wire sizes

\*\*May be used for up to 35KV applications provided proper installation procedures are employed.



# COMPRESSION

## TELECOMMUNICATIONS LUGS

Copper compression terminals for telecommunications applications  
 Produced from high conductivity seamless copper tubing  
 Tin plated to provide corrosion resistance  
 Marked with die index and color coded  
 Sight-hole for inspection on sizes #8 - 4/0 AWG

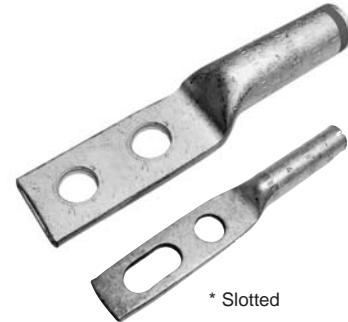


For copper cable  
600V

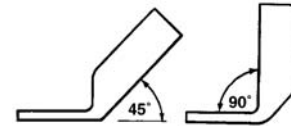
### L-TC SERIES

Two hole

NAED NUMBER	CATALOG NUMBER	WIRE SIZE	BOLT HOLES		DIE		CTN QTY
			SIZE	SPACING	COLOR	INDEX	
33080	L8-TC10-1	#8	#10	5/8	RED	6	50
33081	L8-TC14-1		1/4	5/8			
33061	L6-TC14-1	#6	1/4	5/8	BLUE	7/374	50
33062	L6-TC14-2		1/4	3/4			50
33064	L6-TC14-5		1/4	1			50
33066	L6-TC38-2		3/8	3/4			25
33067	L6-TC38-5	3/8	1	25			
33069	*L6-TC38-25	3/8	3/4-1	25			
33041	L4-TC14-1	#4	1/4	5/8	GRAY	8/346	25
33042	L4-TC14-2		1/4	3/4			
33046	L4-TC38-2		3/8	3/4			
33047	L4-TC38-5		3/8	1			
33031	L3-TC14-1	#3 & 2 SOL	1/4	5/8	WHITE	9	25
33037	L3-TC38-5		3/8	1			
33021	L2-TC14-1	#2	1/4	5/8	BROWN	10	25
33022	L2-TC14-2		1/4	3/4			
33025	L2-TC56-2		5/16	3/4			
33026	L2-TC38-2		3/8	3/4			
33027	L2-TC38-5		3/8	1			
33028	L2-TC38-8		3/8	1 3/4			
33011	L1-TC14-1	#1	1/4	5/8	GREEN	11/375	25
33012	L1-TC14-2		1/4	3/4			
33015	L1-TC56-4		5/16	7/8			
33016	L1-TC38-2		3/8	3/4			
33017	L1-TC38-5		3/8	1			
33101	L10-TC14-1		1/4	5/8			
33102	L10-TC14-2	1/4	3/4	PINK	12/348	25	
33105	L10-TC56-4	#1/0	5/16				7/8
33107	L10-TC38-5	3/8	1				
33201	L20-TC14-1	#2/0	1/4	5/8	BLACK	13	25
33202	L20-TC14-2		1/4	3/4			
33207	L20-TC38-5		3/8	1			
33301	L30-TC14-1	#3/0	1/4	5/8	ORANGE	14	25
33302	L30-TC14-2		1/4	3/4			
33307	L30-TC38-5		3/8	1			
33402	L40-TC14-2	#4/0	1/4	3/4	PURPLE	15	25
33407	L40-TC38-5		3/8	1			
33257	L250-TC38-5	250	3/8	1	YELLOW	16	12
33337	L300-TC38-5	300	3/8	1	WHITE	17/298	
33352	L350-TC14-2	350	1/4	3/4	RED	18/324	
33357	L350-TC38-5	350	3/8	1	RED	18/324	
33502	L500-TC14-2	500	1/4	3/4	BROWN	20/299	
33507	L500-TC38-5	500	3/8	1	BROWN	20/299	
33607	L600-TC38-5	600	3/8	1	GREEN	22/472	6
33757	L750-TC38-5	750	3/8	1	BLACK	24/473	
33917	L1000-TC38-5	1000	3/8	1	WHITE	27	



\* Slotted



For angle lugs consult factory for price and availability.

#### Catalog Number Keys

Key	Bolt Size
TC14	1/4
TC56	5/16
TC38	3/8
TC48	1/2

Key	Hole Spacing
-0	1/2
-1	5/8
-2	3/4
-3	13/16
-4	7/8
-5	1
-6	1 1/4
-7	1 1/2
-8	1 3/4
-25	3/4-1 Slotted
-S	Special

"TC" indicates telecommunications spacing for tang mounting holes.  
 "N" indicates NEMA pattern for tang mounting holes: 2 holes for 1/2" bolts on 1 1/4" centers.  
 Other sizes and types available; consult factory.  
 For blank tangs consult factory for price and availability.  
 UL Listed through 500 MCM.



# GREAVES

## COMPRESSION ReduceЯ™

**GREAVES EXCLUSIVE**

 For copper cable  
 Class B  
 600V 105°C

### STEP-DOWN ADAPTER PLUGS

Copper compression adapters

For reliable termination of Class B copper conductor

Where oversized cable is used to reduce voltage drop on long runs

Where neutrals are upsized for power quality

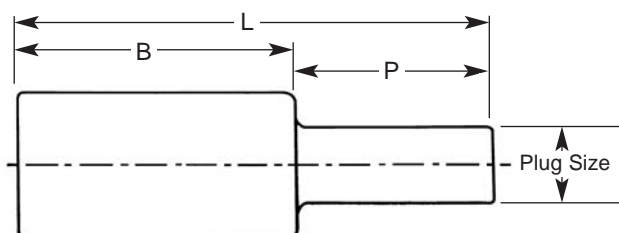
Fits into mechanical set-screw type connectors

Narrow profile often allows use in place of offset adapters on multi-wire terminals

Amperage rating is per the plug size

Fabricated of wrought copper with plug of Class B copper conductor

Insulating covers are provided



### PT-R SERIES

NAED NUMBER	CATALOG NUMBER	FOR CODE CONDUCTOR	NAVY	DIMENSIONS					U - TYPE	
				PLUG SIZE	B	P	L	CABLE STRIP LENGTH	COLOR CODE	DIE INDEX
54102	<b>PT 10R2</b>	#1/0	100	#2	1.75	.75	2.50	1 <sup>1</sup> / <sub>8</sub>	PINK	12/348
54202	<b>PT 20R2</b>	#2/0	125	#2	2.0	.75	2.75	1 <sup>1</sup> / <sub>4</sub>	BLACK	13
54210	<b>PT 20R10</b>	#2/0	125	#1/0	2.0	.75	2.75	1 <sup>1</sup> / <sub>4</sub>	BLACK	13
54320	<b>PT 30R20</b>	#3/0	150	#2/0	2.1	.90	3.0	1 <sup>1</sup> / <sub>4</sub>	ORANGE	14
54420	<b>PT 40R20</b>	#4/0	200	#2/0	2.2	1.0	3.2	1 <sup>1</sup> / <sub>4</sub>	PURPLE	15
54430	<b>PT 40R30</b>	#4/0	200	#3/0	2.2	1.0	3.2	1 <sup>1</sup> / <sub>4</sub>	PURPLE	15
54254	<b>PT 250R40</b>	250 kcmil	250	#4/0	2.2	1.0	3.2	1 <sup>1</sup> / <sub>4</sub>	YELLOW	16
54305	<b>PT 300R250</b>	300 kcmil	300	250 kcmil	2.2	1.1	3.3	1 <sup>1</sup> / <sub>4</sub>	WHITE	17/298
54355	<b>PT 350R250</b>	350 kcmil	350	250 kcmil	2.3	1.2	3.5	1 <sup>1</sup> / <sub>4</sub>	RED	18/324
54353	<b>PT 350R300</b>	350 kcmil	350	300 kcmil	2.3	1.2	3.5	1 <sup>1</sup> / <sub>4</sub>	RED	18/324
54435	<b>PT 400R350</b>	400 kcmil	400	350 kcmil	2.3	1.4	3.7	1 <sup>1</sup> / <sub>4</sub>	BLUE	19/470
54535	<b>PT 500R350</b>	500 kcmil	--	350 kcmil	2.4	1.5	3.9	1 <sup>3</sup> / <sub>8</sub>	BROWN	20/299
54540	<b>PT 500R400</b>	500 kcmil	--	400 kcmil	2.5	1.5	4.0	1 <sup>3</sup> / <sub>8</sub>	BROWN	20/299
54650	<b>PT 600R500</b>	600 kcmil	--	500 kcmil	2.6	1.5	4.1	1 <sup>1</sup> / <sub>2</sub>	GREEN	22/472
54750	<b>PT 750R500</b>	750 kcmil	--	500 kcmil	3.0	1.5	4.5	1 <sup>5</sup> / <sub>8</sub>	BLACK	24/473
54760	<b>PT 750R600</b>	750 kcmil	--	600 kcmil	3.0	1.7	4.7	1 <sup>5</sup> / <sub>8</sub>	BLACK	24/473
54107	<b>PT 1000R750</b>	1000 kcmil	--	750 kcmil	3.0	1.8	4.8	1 <sup>5</sup> / <sub>8</sub>	YELLOW	936



PATENT PENDING

For size combinations not listed, consult factory.

Custom plug lengths available. Consult factory.

For solid pin, consult factory.

For tin plating add suffix "P" to catalog number.

For aluminum cable, use PT Series, see page 40.

[www.greaves-usa.com](http://www.greaves-usa.com)

Guilford, Connecticut 06437 Area Code 203-453-4304 - Fax 203-243-8343

TOLL FREE 1-800-243-1130 (Outside CT)



## COMPRESSION

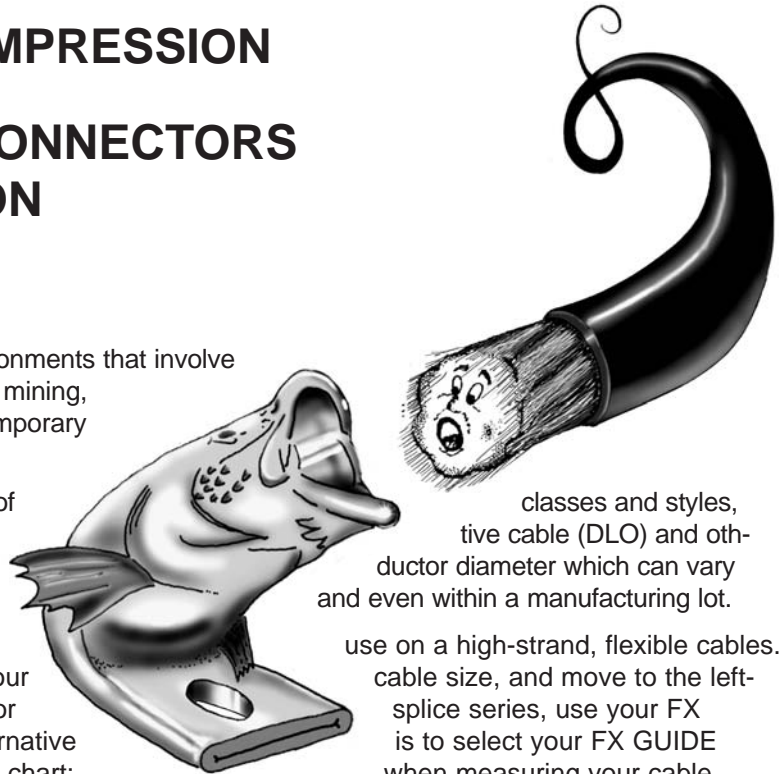
# Shoo-in™ FLEX-CABLE CONNECTORS REFERENCE INFORMATION SIZING GUIDE

High-strand flexible cables are often utilized in environments that involve motion or vibration. Applications include locomotive, mining, marine, welding machinery, wind power turbines, temporary power generators, and transformers.

High-strand flexible cables are available in a variety of such as welding cable, rope cable, diesel-locomotives. Each style has a different nominal cable/conductor diameter which can vary from manufacturer to manufacturer, from lot to lot,

This chart can assist in selection of connectors for Locate your cable across the top, move down to your hand column for your "FX GUIDE". Then for a lug or GUIDE to select your specific lug or splice. An alternative according to the conductor O.D. information on the chart; diameter, include only the bundle of conductors (not the jacket).

For example, 535kcmil DLO cable (1325/24 stranding) indicates an FX GUIDE of "535FX"; for a long-barrel 2-hole NEMA lug, select Cat. No. L535NFX.



classes and styles, tive cable (DLO) and oth- ductor diameter which can vary and even within a manufacturing lot. use on a high-strand, flexible cables. cable size, and move to the left- splice series, use your FX is to select your FX GUIDE when measuring your cable

CABLE DIMENSIONS - REFERENCE INFORMATION									
SIZING GUIDE for FX COMPRESSION LUGS for DLO and FLEX CABLE									
FX CAT. NO. GUIDE	CLASS I-MODIFIED (DIESEL-LOCOMOTIVE CABLE)			CLASS H (ROPE)		CLASS M (WELD)		REFERENCE CLASS B (COMM'L)	
	APPROX (AWG)KCMIL	STRANDS #/AWG	COND. O.D.	AWG	O.D.	AWG	O.D.	AWG	O.D.
50FX	(3)50.5	125/24	.288	#4	.266	#4	.269	#2	.292
60FX	(2)60.6	150/24	.313	#2	.336	#2	.337	#1	.332
90FX	(1)90.9	225/24	.380	#1	.378	#1	.376	#1/0	.373
111FX	(1/0)111.1	275/24	.409	#1/0	.424	#1/0	.423	#2/0	.418
131FX	(2/0)131.3	325/24	.449	#2/0	.477	--	--	#3/0	.470
181FX	(3/0)181.8	450/24	.540	#3/0	.536	#2/0	.508	#4/0	.528
222FX	(4/0)222.2	550/24	.573	#4/0	.602	#3/0	.576	250	.575
262FX	262.6	650/24	.620	250	.653	#4/0	.645	300	.630
313FX	313.1	775/24	.688	300	.716	250	.713	350	.681
373FX	373.7	925/24	.774	350	.773	300	.768	500	.814
444FX	444.4	1100/24	.840	400	.909	350	.825	600	.893
535FX	535.3	1325/24	.908	500	.923	400	.901	700	.964
646FX	646.4	1600/24	1.034	700	1.106	600	1.084	800	1.031
777FX	777.7	1925/24	1.123	800	1.180	700	1.183	1000	1.152
929FX	929.2	2299/24	1.230	1000	1.320	900	1.331	1250	1.289
1111FX	1111.1	2745/24	1.360	1250	1.477	1000	1.404	1500	1.412



COMPRESSION

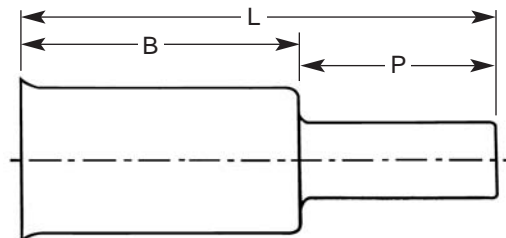
GREAVES EXCLUSIVE

# Shoo-pin™

For copper cable  
600V 105°C

## FLEX CABLE ADAPTER PLUGS

Copper compression adapters  
For reliable termination of highly stranded flexible copper cable  
Used in locomotive, mining, marine, wind power, and machinery applications  
Fits into mechanical set-screw type connectors in panels, transformers, machinery  
Recommended for use on flex/extra-flex high-strand wire with  
PBS, USA, USAD Series insulated connector  
Amperage rating is per the ampacity of the cable  
Features revolutionary Shoo-in™ barrel-opening design for easy cable insertion  
Fabricated of wrought copper with plug of Class B copper conductor  
Insulating covers are provided



## PT-FX SERIES



NAED NUMBER	CATALOG NUMBER	FLEX CABLE OR CODE AWG CONDUCTOR			DIMENSIONS					U - TYPE	
		FLEX CABLE	CODE AWG	NAVY	PLUG SIZE	B	P	L	CABLE STRIP LENGTH	COLOR CODE	DIE INDEX
55424	PT 42FX4	#4STR. (91/24-105/24)	#4	40	#4	1.7	.75	2.45	7/8	GRAY	8/346
55602	PT 60FX2	#2STR. (125/24-150/24)	#2	60	#2	1.7	.75	2.45	1	BROWN	10
55901	PT 90FX1	#1STR. (175/24-225/24)	#1	75	#1	1.7	.75	2.45	1	GREEN	11/375
55111	PT 111FX10	#1/0STR. (275/24)	1/0	100	1/0	2.0	.87	2.87	1 1/8	PINK	12/348
55131	PT 131FX20	#2/0STR. (325/24)	2/0	125	2/0	2.1	.87	2.97	1 1/4	BLACK	13
55181	PT 181FX30	#3/0STR. (450/24)	3/0	150	3/0	2.2	.90	3.10	1 1/4	ORANGE	14
55222	PT 222FX40	#4/0STR. (550/24)	4/0	200	4/0	2.3	1.0	3.30	1 1/4	PURPLE	15



		FLEX CABLE ONLY									
55250	PT 250FX250	250 kcmil FLEX CLASS G 259 CLASS H 427			250 kcmil	2.3	1.10	3.40	1 3/8	YELLOW	16
55262	PT 262FX250	262.6 kcmil FLEX 250 FLEX CLASS I, K, M			250 kcmil	2.4	1.10	3.50	1 3/8	WHITE	17/298
55313	PT 313FX350	313.1 kcmil (775/24) (300 kcmil NOM)			350 kcmil	2.4	1.25	3.65	1 3/8	RED	18/324
55373	PT 373FX350	373.7 kcmil (925/24) (350 kcmil NOM)			350 kcmil	2.7	1.25	3.95	1 3/8	BLUE	19/470
55444	PT 444FX500	444.4 kcmil (1100/24) (450 kcmil NOM)			500 kcmil	2.8	1.50	4.30	1 1/2	BROWN	20/299
55535	PT 535FX500	535.3 kcmil (1325/24) (500 kcmil NOM)			500 kcmil	2.9	1.50	4.40	1 1/2	GREEN	22/472
55646	PT 646FX600	646 kcmil (1600/24) (600 kcmil NOM)			600 kcmil	3.2	1.50	4.70	1 5/8	BLACK	24/473
55777	PT 777FX750	777.7 kcmil (1925/24) (750 kcmil NOM)			750 kcmil	3.3	1.70	5.00	1 3/4	YELLOW	936



Custom plug lengths and diameters available. Consult factory.  
For DLO sizes 929.2, 1111.1 and larger, consult factory for price and delivery.  
For solid pin, consult factory.  
For tin plating add 20% to above pricing and suffix "P" to catalog number.

PATENT PENDING



## COMPRESSION

### Shoo-in™ FLEX-CABLE CONNECTORS

For flexible cable applications in locomotive, marine, mining, welding machinery, temporary power, wind power and transformers  
 Revolutionary flared opening design for easy cable insertion  
 Copper, tin-plated for corrosion resistance

### SHORT BARREL LUGS

Inspection hole for visual inspection of wire insertion

### GL-FX SERIES

One Hole

NAED NUMBER	CATALOG NUMBER	DIESEL-LOCOMOTIVE		CLASS H ROPE CABLE AWG/MCM	CLASS M WELD CABLE AWG/MCM	U - TYPE		
		APPROX (AWG) MCM	CABLE STRAND			BOLT SIZE	COLOR CODE	DIE INDEX
32170	GL 50FX56	(3) 50.5	125/24	#4	#4	5/16	GRAY	8
32171	GL 60FX56	(2) 60.6	150/24	#2	#2	5/16	BROWN	10
32172	GL 90FX56	(1) 90.9	225/24	#1	#1	5/16	GREEN	11/375
32173	GL 111FX38	(1/0) 111.1	275/24	#1/0	#1/0	3/8	PINK	12/348
32174	GL 131FX48	(2/0) 131.3	325/24	#2/0	-	1/2	BLACK	13
32175	GL 181FX48	(3/0) 181.8	450/24	#3/0	#2/0	1/2	ORANGE	14
32176	GL 222FX48	(4/0) 222.2	550/24	#4/0	#3/0	1/2	PURPLE	15
32177	GL 262FX48	262.6	650/24	250	#4/0	1/2	WHITE	17/298
32178	GL 313FX48	313.1	775/24	300	250	1/2	RED	18/324
32179	GL 373FX48	373.7	925/24	350	300	1/2	BLUE	19/470
32180	GL 444FX48	444.4	1100/24	400	350	1/2	BROWN	20/299
32181	GL 535FX48	535.3	1325/24	500	400	1/2	PINK	300
32183	GL 646FX58	646.4	1600/24	700	600	5/8	BLACK	24/473
32184	GL 777FX58	777.7	1925/24	800	700	5/8	YELLOW	936
32185	GL 929FX58	929.2	2299/24	1000	900	5/8	-	*
32186	GL 1111FX58	1111.1	2745/24	1250	1000	5/8	-	P45RT

Two hole NEMA and other configurations available.

\* Consult factory.

### SHORT BARREL SPLICES

Positive center stop

### SC-FX SERIES

NAED NUMBER	CATALOG NUMBER	DIESEL-LOCOMOTIVE		CLASS H ROPE CABLE AWG/MCM	CLASS M WELD CABLE AWG/MCM	U - TYPE	
		APPROX (AWG) MCM	CABLE STRAND			COLOR CODE	DIE INDEX
32151	SC 60FX	(2) 60.6	150/24	#2	#2	BROWN	10
32152	SC 90FX	(1) 90.9	225/24	#1	#1	GREEN	11/375
32153	SC 111FX	(1/0) 111.1	275/24	#1/0	#1/0	PINK	12/348
32154	SC 131FX	(2/0) 131.3	325/24	#2/0	-	BLACK	13
32155	SC 181FX	(3/0) 181.8	450/24	#3/0	#2/0	ORANGE	14
32156	SC 222FX	(4/0) 222.2	550/24	#4/0	#3/0	PURPLE	15
32157	SC 262FX	262.6	650/24	250	#4/0	WHITE	17/298
32158	SC 313FX	313.1	775/24	300	250	RED	18/324
32161	SC 373FX	373.7	925/24	350	300	BLUE	19/470
32159	SC 444FX	444.4	1100/24	400	350	BROWN	20/299
32160	SC 535FX	535.3	1325/24	500	400	PINK	300

Due to the variety of styles of high-strand, flexible cable, and due to the variations among cable manufacturers, it is recommended to fit the conductor to the actual cable being utilized. For Sizing Guide, see page 30.  
 For sizes not listed consult factory for price and availability.



For copper cable  
600 V



- For angle lugs consult factory for price and availability.
- For blank tangs consult factory for price and availability.



For copper cable  
600 V



## COMPRESSION

### Shoo-in™ FLEX-CABLE CONNECTORS

For flexible cable applications in locomotive, mining, marine, welding machinery, temporary power, wind power, and transformers  
 Revolutionary flared opening design for easy cable insertion  
 Copper, tin-plated for corrosion resistance



For copper cable  
600 V



## LONG BARREL LUGS

### L-FX SERIES

#### One Hole

NAED NUMBER	CATALOG NUMBER	DIESEL-LOCOMOTIVE		CLASS H ROPE CABLE AWG/MCM	CLASS M WELD CABLE AWG/MCM	BOLT SIZE	U - TYPE	
		APPROX (AWG) MCM	CABLE STRAND				COLOR CODE	DIE INDEX
32270	L 50FX56	(3) 50.5	125/24	#4	#4	5/16	GRAY	8
32271	L 60FX56	(2) 60.6	150/24	#2	#2	5/16	BROWN	10
32272	L 90FX56	(1) 90.9	225/24	#1	#1	5/16	GREEN	11/375
32273	L 111FX38	(1/0) 111.1	275/24	#1/0	#1/0	3/8	PINK	12/348
32274	L 131FX48	(2/0) 131.3	325/24	#2/0	-	1/2	BLACK	13
32275	L 181FX48	(3/0) 181.8	450/24	#3/0	#2/0	1/2	ORANGE	14
32276	L 222FX48	(4/0) 222.2	550/24	#4/0	#3/0	1/2	PURPLE	15
32277	L 262FX48	262.6	650/24	250	#4/0	1/2	WHITE	17/298
32278	L 313FX48	313.1	775/24	300	250	1/2	RED	18/324
32279	L 373FX48	373.7	925/24	350	300	1/2	BLUE	19/470
32280	L 444FX48	444.4	1100/24	400	350	1/2	BROWN	20/299
32281	L 535FX48	535.3	1325/24	500	400	1/2	PINK	300
32283	L 646FX58	646.4	1600/24	700	600	5/8	BLACK	24/473
32284	L 777FX58	777.7	1925/24	800	700	5/8	YELLOW	936
32285	L 929FX58	929.2	2299/24	1000	900	5/8	-	P44RT
32286	L 1111FX58	1111.1	2745/24	1250	1000	5/8	-	P45RT

## LONG BARREL LUGS

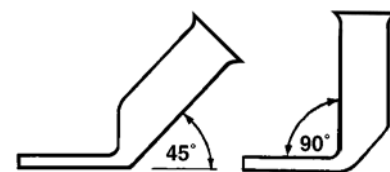
### L-NFX SERIES

#### Two Hole NEMA

NAED NUMBER	CATALOG NUMBER	DIESEL-LOCOMOTIVE		CLASS H ROPE CABLE AWG/MCM	CLASS M WELD CABLE AWG/MCM	BOLT SIZE	U - TYPE	
		APPROX (AWG) MCM	CABLE STRAND				COLOR CODE	DIE INDEX
32372	L 90NFX	(1) 90.9	225/24	#1	#1	1/2	GREEN	11/375
32373	L 111NFX	(1/0) 111.1	275/24	#1/0	#1/0	1/2	PINK	12/348
32374	L 131NFX	(2/0) 131.3	325/24	#2/0	-	1/2	BLACK	13
32375	L 181NFX	(3/0) 181.8	450/24	#3/0	#2/0	1/2	ORANGE	14
32376	L 222NFX	(4/0) 222.2	550/24	#4/0	#3/0	1/2	PURPLE	15
32377	L 262NFX	262.6	650/24	250	#4/0	1/2	WHITE	17/298
32378	L 313NFX	313.1	775/24	300	250	1/2	RED	18/324
32379	L 373NFX	373.7	925/24	350	300	1/2	BLUE	19/470
32380	L 444NFX	444.4	1100/24	400	350	1/2	BROWN	20/299
32381	L 535NFX	535.3	1325/24	500	400	1/2	PINK	300
32383	L 646NFX	646.4	1600/24	700	600	1/2	BLACK	24/473
32384	L 777NFX	777.7	1925/24	800	700	1/2	YELLOW	936
32385	L 929NFX	929.2	2299/24	1000	900	1/2	-	P44RT
32386	L 1111NFX	1111.1	2745/24	1250	1000	1/2	-	P45RT



For copper cable  
600 V



- For angle lugs consult factory for price and availability.
- For blank tangs consult factory for price and availability.

Due to the variety of styles of high-strand, flexible cable, and due to the variations among cable manufacturers, it is recommended to fit the conductor to the actual cable being utilized. For Sizing Guide, see page 30. Suffix "N" indicates NEMA tang drilling, 1 3/4" on centers for 1/2" bolts.



## COMPRESSION

### HIGH VOLTAGE COPPER LUGS AND SPLICES

Tapered for corona relief and ease of reinsulation

For use on copper conductors up to 69KV

Tinned high conductivity seamless copper tubing

#### C-V SERIES

#### Splice

NAED NUMBER	CATALOG NUMBER	WIRE SIZE	COLOR CODE	DIE INDEX	CTN QTY
70480	C 4 V	4	GRAY	8/346	50
70485	C 2 V	2	BROWN	10	25
70490	C 1 V	1	GREEN	11/375	25
70495	C 10 V	1/0	PINK	12/348	12
70500	C 20 V	2/0	BLACK	13	12
70505	C 30 V	3/0	ORANGE	14	12
70510	C 40 V	4/0	PURPLE	15	12
70515	C 250 V	250	YELLOW	16	12
70520	C 350 V	350	RED	18/324	12
70525	C 500 V	500	BROWN	20/299	6
70530	C 750 V	750	BLACK	24/473	6

Dimpled center stops to equalize cable insertions

#### High Voltage 69 KV



#### High Voltage Copper Butt Splices

#### L-V SERIES

#### One Hole

NAED NUMBER	CATALOG NUMBER	WIRE SIZE	BOLT SIZE	COLOR CODE	DIE INDEX	CTN QTY
70360	L 4 V	4	3/8	GRAY	8/346	50
70365	L 2 V	2	3/8	BROWN	10	25
70370	L 1 V	1	3/8	GREEN	11/375	25
70375	L 10 V	1/0	3/8	PINK	12/348	12
70380	L 20 V	2/0	1/2	BLACK	13	12
70385	L 30 V	3/0	1/2	ORANGE	14	12
70390	L 40 V	4/0	1/2	PURPLE	15	12
70395	L 250 V	250	1/2	YELLOW	16	12
70400	L 350 V	350	1/2	RED	18/324	12



#### High Voltage Copper Lugs

#### L-NV SERIES

#### Two Hole NEMA

NAED NUMBER	CATALOG NUMBER	WIRE SIZE	BOLT SIZE	COLOR CODE	DIE INDEX	CTN QTY
70420	L 20 NV	2/0	1/2	BLACK	13	12
70425	L 30 NV	3/0	1/2	ORANGE	14	12
70430	L 40 NV	4/0	1/2	PURPLE	15	12
70435	L 250 NV	250	1/2	YELLOW	16	12
70440	L 350 NV	350	1/2	RED	18/324	12
70445	L 500 NV	500	1/2	BROWN	20/299	6
70450	L 750 NV	750	1/2	BLACK	24/473	6



#### High Voltage 2 Hole NEMA Copper Lugs

Suffix "N" indicates NEMA tang drilling, 1<sup>3</sup>/<sub>4</sub>" on center for 1/2" bolts.  
Consult factory for sizes not listed.



## COMPRESSION

GREAVES EXCLUSIVE

# NECK-DOWN™ COPPER REDUCING SPLICES

Long barrel reducers to join copper wires of different sizes

Produced from high-conductivity seamless copper tubing

Marked with die index and die color code on each end

For copper cable only

600V

## ND-R SERIES

NAED NUMBER	CATALOG NUMBER	WIRE SIZE		DIE A		DIE B	
		A	B	INDEX	COLOR	INDEX	COLOR
52012	ND 10R2		#2			10	BROWN
52011	ND 10R1	#1/0	1	12/348	PINK	11/375	GREEN
52021	ND 20R10	2/0	1/0	13	BLACK	12/348	PINK
52032	ND 30R20	3/0	2/0	14	ORANGE	13	BLACK
52042	ND 40R20	4/0	2/0	15	PURPLE	13	BLACK
52043	ND 40R30		3/0			14	ORANGE
52252	ND 250R20	250	2/0	16	YELLOW	13	BLACK
52254	ND 250R40		4/0			15	PURPLE
52302	ND 300R250	300	250	17/298	WHITE	16	YELLOW
52354	ND 350R40	350	4/0	18/324	RED	15	PURPLE
52352	ND 350R250	350	250	81/324	RED	16	YELLOW
52403	ND 400R350	400	350	91/470	BLUE	18/324	RED
52502	ND 500R250		250			16	YELLOW
52503	ND 500R350	500	350	20/299	BROWN	18/324	RED
52504	ND 500R400		400			19/470	BLUE
52635	ND 600R350	600	350	22/472	GREEN	18/324	RED
52650	ND 600R500		500			20/299	BROWN
52755	ND 750R500	750	500	24/473	BLACK	20/299	BROWN
52756	ND 750R600		600			22/472	GREEN
52107	ND 1000R750	1000	750	27	WHITE	24/473	BLACK
52121	ND 1250R1000	1250	1000	29	YELLOW	27	WHITE
52151	ND 1500R1000	1500	1000	31	GREEN	27	WHITE
52162	ND 1500R1250	1500	1250	31	GREEN	29	YELLOW



A B

Manufactured to order in 3-4 days. \*Minimum order 3 pieces of same size.

For tin plating add suffix "P" to Catalog No; adds approx. 1 week production time.

Consult factory for combinations not listed.

## ALUMINUM REDUCING SPLICES

Made of high conductivity wrought aluminum

Long barrel with positive center stop to assure proper cable insertion

Connector bores are coated with oxide-inhibitor and capped

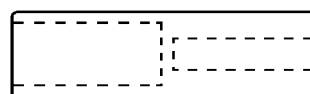
## AC-R SERIES

NAED NUMBER	CATALOG NUMBER	WIRE SIZE		DIE A & B	
		A	B	INDEX	COLOR
53012	AC 10R2	#1/0	#2	296	TAN
53021	AC 20R1	2/0	1	297	OLIVE
53031	AC 30R10	3/0	1/0	467	RUBY
53042	AC 40R20	4/0	2/0	17/298	WHITE
53253	AC 250R30	250	3/0	18/324	RED
53304	AC 300R40	300	4/0	19/470	BLUE
53354	AC 350R40	350	4/0	20/299	BROWN
53402	AC 400R250	400	250	22/472	GREEN
53530	AC 500R300	500	300	300	PINK
53635	AC 600R350	600	350	24/473	BLACK
53750	AC 750R500	750	500	936	YELLOW
53107	AC 1000R750	1000	750	302	BROWN

## Dual-Rated

CU9AL

600 V



A B

Consult factory for combinations not listed.

www.greaves-usa.com

Guilford, Connecticut 06437 Area Code 203-453-4304 - Fax 203-243-8343

TOLL FREE 1-800-243-1130 (Outside CT)



## COMPRESSION

### REDUCING ADAPTERS

Use when needed to reduce barrel size to fit smaller wire

Versatile adapters fit into copper compression splice or lug to reduce barrel size

Install with compression die appropriate for barrel size

High conductivity copper, tin-plated

Some sizes are corrugated, some smooth with open seam

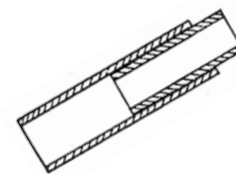
### CRA SERIES

NAED NUMBER	CATALOG NUMBER	REDUCES SIZE		LENGTH	DIE	
		FROM	TO		COLOR	INDEX
41616	CRA10- 6	1/0	#6	1 <sup>5</sup> / <sub>16</sub>	PINK	12/348
41614	CRA10- 4		4			
41646	CRA40- 6	4/0	#6	1 <sup>3</sup> / <sub>4</sub>	PURPLE	15
41644	CRA40- 4		4			
41645	CRA40- 2		2			
41640	CRA40- 1		1			
41641	CRA40- 10		1/0			
41642	CRA40- 20		2/0			
41643	CRA40- 30	3/0				
41625	CRA250- 2	250	#2	2	YELLOW	16
41620	CRA250- 1		1			
41621	CRA250-10		1/0			
41622	CRA250-20		2/0			
41623	CRA250-30		3/0			
41624	CRA250-40		4/0			
41635	CRA300- 2	300	#2	2	WHITE	17/298
41631	CRA300- 10		1/0			
41632	CRA300- 20		2/0			
41633	CRA300- 30		3/0			
41634	CRA300- 40		4/0			
41636	CRA350- 20	350	2/0	2	RED	18/324
41637	CRA350- 40		4/0			
41638	CRA350-250		250			
41639	CRA350-300		300			
41656	CRA500- 6	500	#6	2 <sup>1</sup> / <sub>4</sub>	BROWN	20/299
41654	CRA500- 4		4			
41655	CRA500- 2		2			
41650	CRA500- 1		1			
41651	CRA500- 10		1/0			
41652	CRA500- 20		2/0			
41653	CRA500- 30		3/0			
41670	CRA500- 40		4/0			
41671	CRA500-250	500	250	2 <sup>1</sup> / <sub>4</sub>	BROWN	20/299
41672	CRA500-300		300			
41673	CRA500-350		350			
41674	CRA500-400		400			
41665	CRA600-500	600	500	2 <sup>1</sup> / <sub>4</sub>	GREEN	22/472
41675	CRA750-500	750	500	2 <sup>1</sup> / <sub>4</sub>	BLACK	24
41676	CRA750-600		600			
41607	CRA1000-750	1000	750	3	WHITE	27

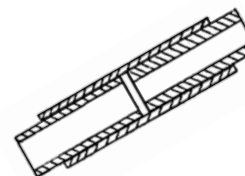
Other sizes available: consult factory.



Copper wire only



Single CRA  
in splice



Two CRAs  
if needed to  
accommodate  
wires



Assembled  
User to provides  
wires



## COMPRESSION

### COMPRESSION REDUCER KITS

Splice two sizes of Class B copper cable; installer to supply all cable

Use to join a new system to an existing system, or

Use to reduce an oversized wire to fit a lug supplied on the equipment

Kit includes CRA adapter(s) to reduce the barrel to fit the cable sizes.

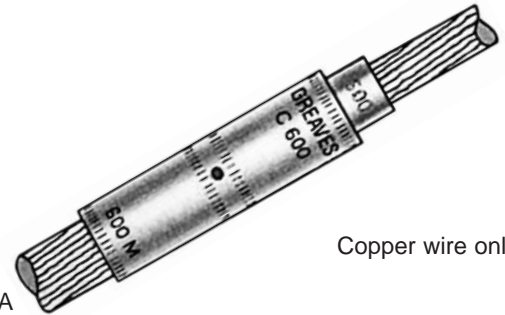
Each kit contains: Long barrel compression splice (C Series)

Adapter(s) for reduction/tip end (CRA Series)

Adapter(s) for cable/run end, if needed (CRA Series)

All components are high conductivity copper, tin-plated

CRK kits are designed for copper cable only. To splice an aluminum cable to a smaller copper cable, consult the factory for an ACK-R Kit (ASC-T splice with CRA insert), or use a PT Bi-Metallic Adapter or AC-R Aluminum Reducing Splice.



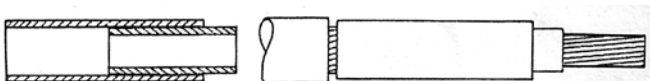
Copper wire only

### CRK SERIES

NAED NUMBER	CATALOG NUMBER	REDUCES SIZE		KIT INCLUDES			DIE	
		FROM	TO	CRA	C	CRA	COLOR	INDEX
41729	CRK2-6	#2	#6	-	C2	2-6	BROWN	10
41716	CRK10-6	#1/0	6	-	C10	10-6	PINK	12/348
41714	CRK10-4		4			10-4		
41721	CRK20-1	#2/0	1	40-20	C40	40-1	PURPLE	15
41734	CRK30-4	#3/0	4	40-30	C40	40-4	PURPLE	15
41732	CRK30-2		2	40-30		40-2		
41735	CRK30-10		1/0	40-30		40-10		
41730	CRK30-20		2/0	40-30		40-20		
41746	CRK40-6		6					
41745	CRK40-2	2				40-2		
41741	CRK40-10	#4/0	1/0	-	C40	40-10	PURPLE	15
41742	CRK40-20		2/0			40-20		
41743	CRK40-30		3/0			40-30		
41786	CRK250-6		6					
41785	CRK250-2	2				250-2		
41781	CRK250-10	250	1/0	-	C250	250-10	YELLOW	16
41782	CRK250-20		2/0			250-20		
41783	CRK250-30		3/0			250-30		
41784	CRK250-40		4/0			250-40		
41796	CRK350-20		2/0					
41797	CRK350-40	4/0				350-40		
41749	CRK400-250	400	250	500-400	C500	500-250	BROWN	20/299
41756	CRK500-6	500	6	-	C500	500-6	BROWN	20/299
41752	CRK500-20		2/0			500-20		
41753	CRK500-30		3/0			500-30		
41770	CRK500-40		4/0			500-40		
41771	CRK500-250		250			500-250		
41773	CRK500-350		350			500-350		
41774	CRK500-400		400			500-400		
41762	CRK600-300		300					
41763	CRK600-350	600	350	-	C600	600-500 + 500-350	GREEN	22/472
41764	CRK600-400		400			600-500 + 500-400		
41765	CRK600-500		500			600-500		
41775	CRK750-500		500			750-500		
41776	CRK750-600	600				750-600	BLACK	24
41707	CRK1000-750	1000	750	-	C1000	1000-750	WHITE	27

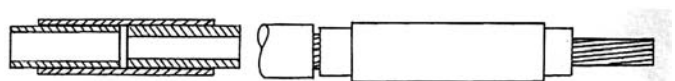
Other kit combinations available; consult factory.

**Example:** CRK 500-350 configuration with single adapter



Assembled, user provides wires

**Example:** CRK 400-250 configuration with two adapters to fit wires



Assembled, user provides wires

www.greaves-usa.com

Guilford, Connecticut 06437 Area Code 203-453-4304 - Fax 203-243-8343

TOLL FREE 1-800-243-1130 (Outside CT)



## COMPRESSION

### ALUMINUM SPLICES & LUGS

Made of high conductivity wrought aluminum

Connector bores are coated with BUG•LUG™ oxide inhibitor and capped

Marked with die index, cap color indicates die code

Tin plated to provide corrosion resistance



**Dual-Rated**

CU9AL  
\*\*600 V

#### ASC-T SERIES

#### Splices

NAED NUMBER	CATALOG NUMBER	WIRE SIZE	COLOR CODE	DIE INDEX	CTN QTY
50300	ASC 6 T	6	GRAY	8/346	24
50302	ASC 4 T	4	GREEN	11/375	24
50304	ASC 2 T	2	PINK	12/348	24
50306	ASC 1 T	1	GOLD	471	24
50308	ASC 10 T	1/0	TAN	296	24
50310	ASC 20 T	2/0	OLIVE	297	12
50312	ASC 30 T	3/0	RUBY	467	12
50314	ASC 40 T	4/0	WHITE	17/298	12
50316	ASC 250 T	250	RED	18/324	12
50318	ASC 300 T	300	BLUE	19/470	6
50320	ASC 350 T	350	BROWN	20/299	6
50324	ASC 400 T	400	GREEN	22/472	6
50326	ASC 500 T	500	PINK	300	6
50328	ASC 600 T	600	BLACK	24/473	6
50330	ASC 750 T	750	YELLOW	936	3
50332	ASC 1000 T	1000	BROWN	302	1



Positive center stop assures proper cable insertion

#### AL SERIES

#### Lugs

NAED NUMBER	CATALOG NUMBER	WIRE SIZE	BOLT SIZE	COLOR CODE	DIE INDEX	CTN QTY
50400	*AL 6-14	6	1/4	GRAY	8/346	24
50402	*AL 4-14		1/4			
50403	AL 4-38	4	3/8	GREEN	11/375	24
50404	*AL 2-14	2	1/4	PINK	12/348	24
50405	*AL 1-14	1	1/4	GOLD	471	24
50406	*AL 10-38		3/8			
50408	AL 10-48	1/0	1/2	TAN	296	24
50410	*AL 20-38		3/8			
50412	AL 20-48	2/0	1/2	OLIVE	297	12
50414	*AL 30-38		3/8			
50416	AL 30-48	3/0	1/2	RUBY	467	12
50418	*AL 40-38		3/8			
50420	AL 40-48	4/0	1/2	WHITE	17/298	12
50422	*AL 250-48	250		RED	18/324	12
50424	*AL 300-48	300	1/2	BLUE	19/470	6
50426	*AL 350-48	350		BROWN	20/299	6
50428	*AL 400-48	400	1/2	GREEN	22/472	6
50432	*AL 500-48		1/2			
50434	AL 500-58	500	5/8	PINK	300	6
50436	AL 600-48		1/2			
50438	*AL 600-58	600	5/8	BLACK	24/473	3
50442	AL 750-48		1/2			
50444	*AL 750-58	750	5/8	YELLOW	936	3
50450	*AL 1000-58	1000	5/8	BROWN	302	1



**Dual-Rated**

CU9AL  
\*\*600 V



\*NEMA stud drilling

\*\*May be used for applications up to 35KV provided proper installation procedures are employed.

For undrilled tangs, consult factory for price and availability.

www.greaves-usa.com

Guilford, Connecticut 06437 Area Code 203-453-4304 - Fax 203-243-8343

TOLL FREE 1-800-243-1130 (Outside CT)



## COMPRESSION

### ALUMINUM LUGS

Designed for heavy duty dual-rated applications

Made of high conductivity wrought aluminum

Tin plated to provide corrosion resistance

Connector bores are coated with BUG•LUG oxide inhibitor and capped

Cap color indicates die code



**Dual-Rated**

CU9AL

\*\*600 V



### AL-N SERIES

### Two-Hole NEMA

NAED NUMBER	CATALOG NUMBER	WIRE SIZE	BOLT SIZE	COLOR CODE	DIE INDEX	CTN QTY
50454	AL 10 N	1/0	1/2	TAN	296	12
50456	AL 20 N	2/0	1/2	OLIVE	297	12
50458	AL 30 N	3/0	1/2	RUBY	467	12
50460	AL 40 N	4/0	1/2	WHITE	17/298	12
50462	AL 250 N	250	1/2	RED	18/324	12
50464	AL 300 N	300	1/2	BLUE	470	6
50466	AL 350 N	350	1/2	BROWN	20/299	6
50468	AL 400 N	400	1/2	GREEN	22/472	6
50470	AL 500 N	500	1/2	PINK	300	6
50472	AL 600 N	600	1/2	BLACK	24/473	3
50474	AL 750 N	750	1/2	YELLOW	936	3
50478	AL 1000 N	1000	1/2	BROWN	302	1

All Lugs through 750 MCM have a 1<sup>3</sup>/<sub>4</sub>" or less tang width, to accommodate side by side NEMA stud spacing.

### STACKING ALUMINUM LUGS

Made of high conductivity wrought aluminum

Tin plated to provide corrosion resistance

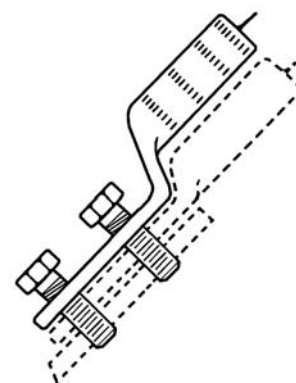
Connector bores are coated with BUG•LUG oxide inhibitor and capped

Designed to fit specifically with AL-N series to form pair



**Dual-Rated CU9AL**

\*\*600 V



### ASL-N SERIES

### Two-Hole NEMA

NAED NUMBER	CATALOG NUMBER	WIRE SIZE	BOLT SIZE	COLOR CODE	DIE INDEX
60725	ASL 10 N	1/0	1/2	TAN	296
60730	ASL 20 N	2/0	1/2	OLIVE	297
60735	ASL 30 N	3/0	1/2	RUBY	467
60740	ASL 40 N	4/0	1/2	WHITE	17/298
60745	ASL 250 N	250	1/2	RED	18/324
60750	ASL 300 N	300	1/2	BLUE	19/470
60755	ASL 350 N	350	1/2	BROWN	20/299
60760	ASL 400 N	400	1/2	GREEN	22/472
60765	ASL 500 N	500	1/2	PINK	300
60770	ASL 600 N	600	1/2	BLACK	24/473
60775	ASL 750 N	750	1/2	YELLOW	936

Suffix "N" indicates NEMA tang drilling, 1<sup>3</sup>/<sub>4</sub>" on centers for 1/2" bolts.

\*\*May be used for applications up to 35KV provided proper installation procedures are employed.

All Lugs through 750 MCM have a 1<sup>3</sup>/<sub>4</sub>" or less tang width, to accommodate side by side NEMA stud spacing.

#### CAUTION

May not fit competitor lugs.  
Greaves AL-N Series lugs are recommended to make pair.



## COMPRESSION

Dual-Rated

### METER SOCKET LUGS

840 Common dies

High conductivity wrought aluminum

Prefilled with BUG•LUG oxide inhibitor

One die installs full conductor range

For aluminum or copper conductors



### ACL SERIES

NAED NUMBER	CATALOG NUMBER	BOLT SIZE	CONCENTRIC COMPRESSED	COMPACT	SOLID	INSTALLING DIES	CTN QTY
70205	*ACL 6-3	1/2	6	6	-	RED 840 18 324 TX 76 11A 249	50
70215	*ACL 4-3	1/2	4	4	2		
70225	ACL 2-6	3/8	2	2 & 1	1		
70226	ACL 2-3	1/2					
70235	ACL 1-6	3/8	1	1/0	1/0		
70236	ACL 1-3	1/2					
70245	ACL 10-6	3/8	1/0	2/0	2/0		
70246	ACL 10-3	1/2					
70255	ACL 20-6	3/8	2/0	3/0	3/0		
70256	ACL 20-3	1/2					
70265	ACL 30-6	3/8	3/0	-	-		
70266	ACL 30-3	1/2					
70275	ACL 40-6	3/8	4/0	-	-		
70276	ACL 40-3	1/2					
70285	ACL 250-6	3/8	250	-	-		
70286	ACL 250-3	1/2					

\*Available with 1/2" bolt drilling only. For 3/8" Stud use LP3R6 Reducer Bushing see page 39.

For tin plating add the suffix "P" to the catalog number.

### STRANDED BI-METALLIC PIN TERMINALS

Designed to facilitate termination of aluminum conductors

Tin plated stranded copper pin

Connector bores are coated with BUG•LUG oxide inhibitor

Supplied with insulating cover

Underwriters Laboratories 486B Listed E65658



### PT SERIES

NAED NUMBER	CATALOG NUMBER	ALUMINUM WIRE SIZE	CU STRND. PIN	U - TYPE		CTN QTY
				COLOR CODE	DIE INDEX	
51906	PT 6	#6	#8			25
51904	PT 4	#4	#6	TAN	296	25
51902	PT 2	#2	#4			25
51900	PT 1	#1	#3			10
51908	PT 10	1/0	#2			10
51910	PT 20	2/0	#1	RED	18/324	10
51912	PT 30	3/0	1/0			10
51914	PT 40	4/0	2/0			10
51916	PT 250	250	3/0			10
51918	PT 300	300	4/0	BROWN	20/299	10
51920	PT 350	350	4/0			10
51922	PT 400	400	250	PINK	300	10
51924	PT 500	500	350			10
51926	PT 600	600	350	YELLOW	936	3
51928	PT 750	750	500			3



Not UL Listed when used as a copper cable reducer.

Recommended for use with die-type compression tool only.

www.greaves-usa.com

Guilford, Connecticut 06437 Area Code 203-453-4304 - Fax 203-243-8343

TOLL FREE 1-800-243-1130 (Outside CT)